

Revízia zraniteľných oblastí SR - Príloha 8

Znázornenie povodí jednotlivých hodnotených monitorovacích miest

Čiastkové povodie Váh – povodie rieky Nitry

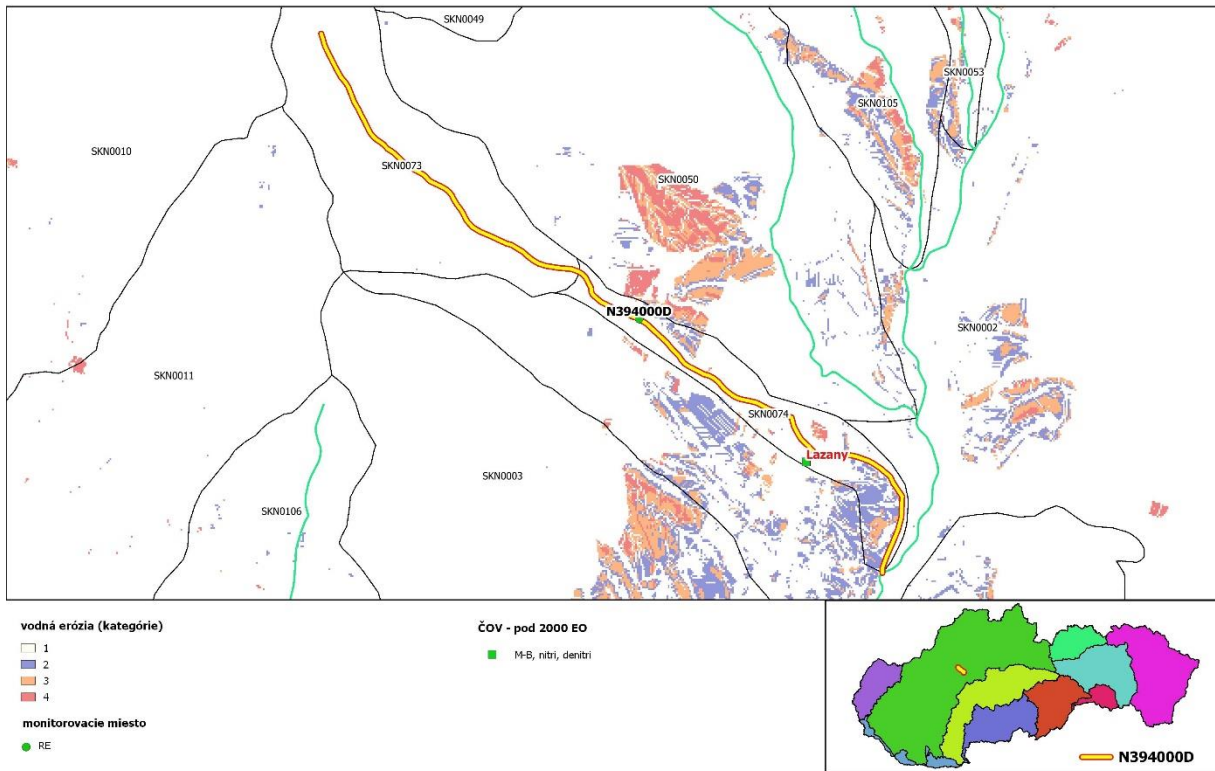
V čiastkovom povodí Váhu – povodí rieky Nitry boli analýze stanovenia dominantného zdroja znečisťovania nutirentami podrobené povodia 75 monitorovacích miest povrchových vôd (Tab.1), v ktorých boli v zmysle hodnotenia podľa Smernice 91/676/EHS za obdobie 2015 -2018 indikované problémy (konkrétne výsledky hodnotenia sú uvedené v Tabuľke A Prílohy 7). Na Obr. 1 - 75 (zdroj: VÚVH) sú znázornené ich analyzované povodia s identifikáciou komunálnych ČOV, kategórií vodnej erózie a, v prípade situovania v analyzovanom povodí, aj environmentálnych záťaží súvisiacich s poľnohospodárskou výrobou.

Tab. 1 ČP Váh – povodie rieky Nitry - zoznam monitorovacích miest analyzovaných povodí povrchových vôd

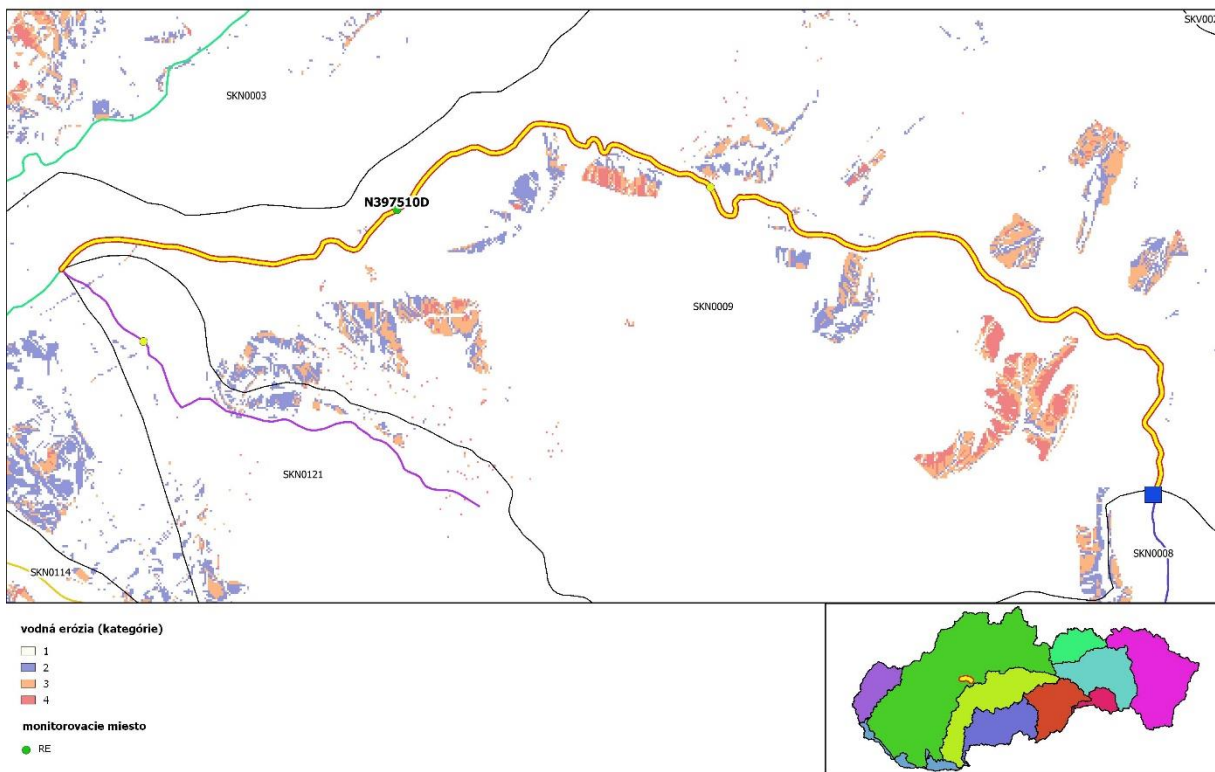
Identifikácia monitorovacieho miesta		
Kód	Názov	kód VÚ
N394000D	PORUBSKÝ POTOK - PORUBA	SKN0074
N397510D	HANDLOVKA - PRIEVIDZA NAD	SKN0009
N3975200	MOŠTENICA - ÚSTIE	SKN0121
N405511D	HANDLOVKA - NAD HANDLOVOU	SKN0008
N408500D	CIGLIANKA - SEBEDRAŽIE	SKN0114
N410510D	HANDLOVKA - KOŠ	SKN0009
N412500D	LEHOTSÝ POTOK - NAD LEHOTOU POD VTÁČNIKOM	SKN0045
N414010D	LEHOTSÝ POTOK - NOVÁKY	SKN0045
N416000D	NITRA - CHALMOVÁ	SKN0003
N421000D	KOLAČNIANSKY POTOK - NAD VN KOLAČNO	SKN0093
N439010D	NITRICA - PARTIZÁNSKE	SKN0011
N445000D	VYČOMA - KLÁTOVA NOVÁ VES	SKN0079
N457003D	BEBRAVA - BÁNOVCE NAD BEBRAVOU	SKN0014
N460000D	SVINNICA - SVINNÁ	SKN0071
N473500D	HALÁČOVKA - PEČEŇANY	SKN0024
N482500D	HYDINA - NEDAŠOVCE	SKN0070
N487500D	BEBRAVA - KRUŠOVCE	SKN0014
N489000D	DRSŇA - KRŇČA	SKN0041
N491005D	ŽELEZNICA - PRAŠICE	SKN0028
N497000D	NITRA - NITRIANSKA STREDA	SKN0004
N499500D	BOJNIANKA - URMINCE	SKN0084
N500500D	BOJNIANKA - CHRABRANY	SKN0084
N503000D	ZĽAVSKÝ POTOK - NEMČICE	SKN0030
N504500D	DUBNICA - NAD SÚLOVCAMI, BETLEHEM	SKN0088
N508510D	CHRABRIANSKY KANÁL - DVORANY NAD NITROU	SKN0142
N510010D	LEFANTOVSKÝ POTOK - HORNÉ LEFANTOVCE	SKN0094
N517500D	RADOŠINKA - MALÉ RIPŇANY	SKN0015
N517510D	HLAVINKA - MALÉ RIPŇANY	SKN0068
N519000D	HLAVINKA - KRTOVCE	SKN0067
N521510D	MERAŠICKÝ POTOK - DOLNÉ OTROKOVCE	SKN0136
N524500D	TRHOVIŠŤSKÝ POTOK - DOLNÉ TRHOVIŠTE	SKN0137
N529000D	RADOŠINKA - ČAB	SKN0016
N531000D	ANDAČ - ALEKŠINCE	SKN0076
N532000D	BLATINA - LUKÁČOVCE	SKN0138
N535500D	PERKOVSKÝ POTOK - HRUBOŇOVO	SKN0066
N537500D	RADOŠINKA - ZBEHY	SKN0016
N539000D	DOBROTKA - DRÁŽOVCE	SKN0082
N541010D	KADAŇ - GOLIANOVO	SKN0056
N541520D	SELENEC - SELENEC	SKN0143
N543510D	JANÍKOVSKÝ KANÁL - JANÍKOVCE	SKN0128
N544500D	NITRA - ČECHYNCE	SKN0004
N546010D	PANIANSKY POTOK - PAŇA	SKN0127

Príloha 8 – Znázornenie povodí jednotlivých hodnotených monitorovacích miest

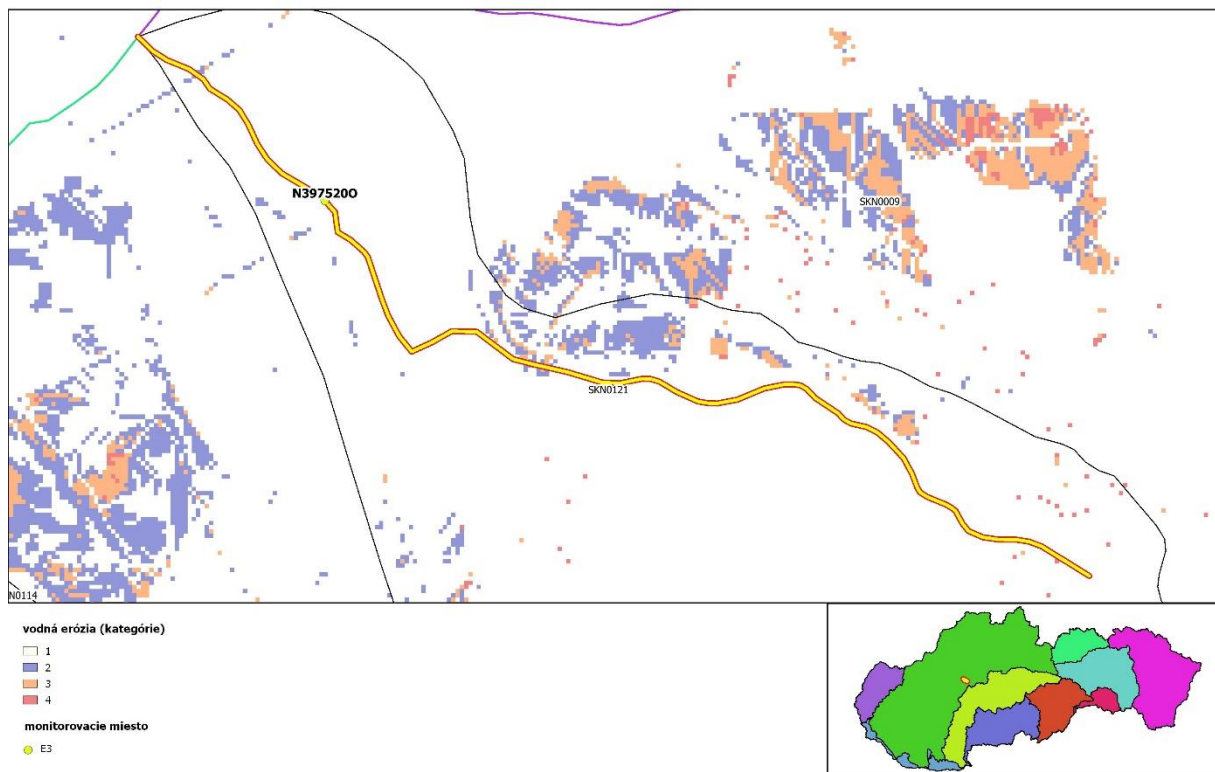
Identifikácia monitorovacieho miesta		
Kód	Názov	kód VÚ
N553520D	STRÁNKA - ZLATÉ MORAVCE	SKN0040
N553530D	PELÚSOK - ZLATÉ MORAVCE	SKN0043
N555510D	LEVEŠ - TOPOĽČIANKY	SKN0036
N556001D	JARKY - NAD ŽIKAVOU	SKN0097
N559000D	ŽITAVA - TESÁRSKE MLYŇANY	SKN0019
N561500D	SĽAŽIANSKY POTOK - SĽAŽANY	SKN0090
N5630000	DREVENICA - NOVÁ VES NAD ŽITAVOU	SKN0059
N563500D	DREVENICA - KOSTOĽANY POD TRÍBEČOM	SKN0058
N564500D	JELENSKÝ POTOK 2 - JELENEC	SKN0038
N567000D	BOCEGAJ - BARATSKO	SKN0063
N569510D	BOČOVKA - ČIERNE KĽAČANY	SKN0031
N5735100	HOSŤOVSKÝ POTOK - VRÁBLE	SKN0057
N5735200	KOVÁČOVSKÝ POTOK - VRÁBLE	SKN0134
N575210D	TELÍNSKY POTOK - VRÁBLE	SKN0060
N577000D	HOSŤOVSKÝ POTOK - VEĽKÉ CHYNDICE	SKN0057
N578000D	BABINDOLSKÝ POTOK - BABINDOL	SKN0140
N580000D	ŽITAVA - LÚČNICA	SKN0019
N585500D	BEŠIANSKY POTOK - BEŠA	SKN0131
N587000D	LISKA - BELEK	SKN0081
N588000D	TRÁVNICKÝ POTOK - TRÁVNICA	SKN0130
N5895000	LISKA - HUL	SKN0081
N589510D	ŽITAVA - HUL	SKN0019
N590010D	CHRENOVKA - ÚSTIE, DOLNÝ OHAJ	SKN0141
N598520D	MALÁ NITRA - POD ŠURANMI	SKN0005
N598523N	STARÁ NITRA - POD MARTOV CAMI	SKV0046
N598554D	PRÍBETSKÝ KANÁL - NAD BAJČOM	SKV0350
N598555D	MARTOVSKÝ KANÁL - MARTOVCE	SKV0203
N761500D	DLHÝ KANÁL - MOČENOK	SKN0020
N768000D	CABAJSKÝ POTOK - NAD POĽNÝM KESOVOM	SKN0077
N768500D	TVRDOŠOVSKÝ POTOK - RASTISLAVICE, NAD MOSTOM	SKN0054
N773000D	DLHÝ KANÁL - PALÁRIKOVO	SKN0023
N773010D	KOMOČSKÝ KANÁL - POD PALÁRIKOVOM	SKV0173
N774000D	DLHÝ KANÁL - ANDOVCE	SKN0023



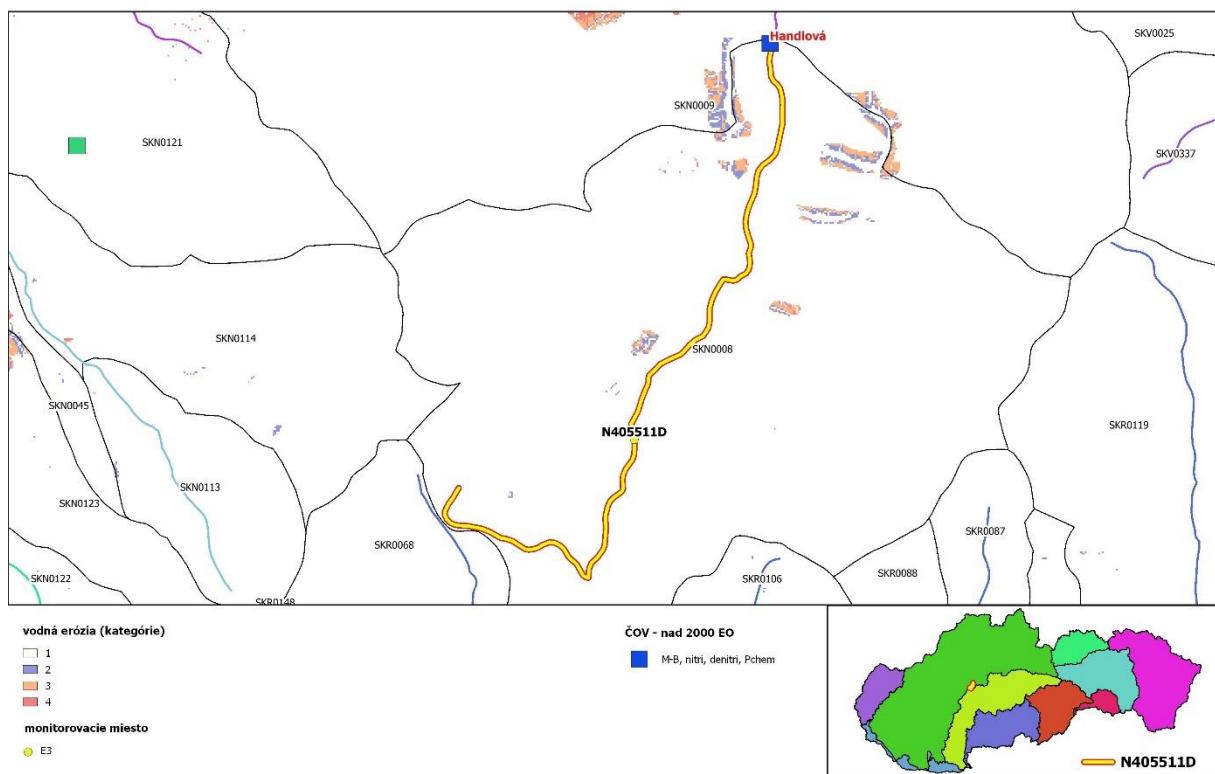
Obr.1 Analyzované povodie monitorovacieho miesta N394000D



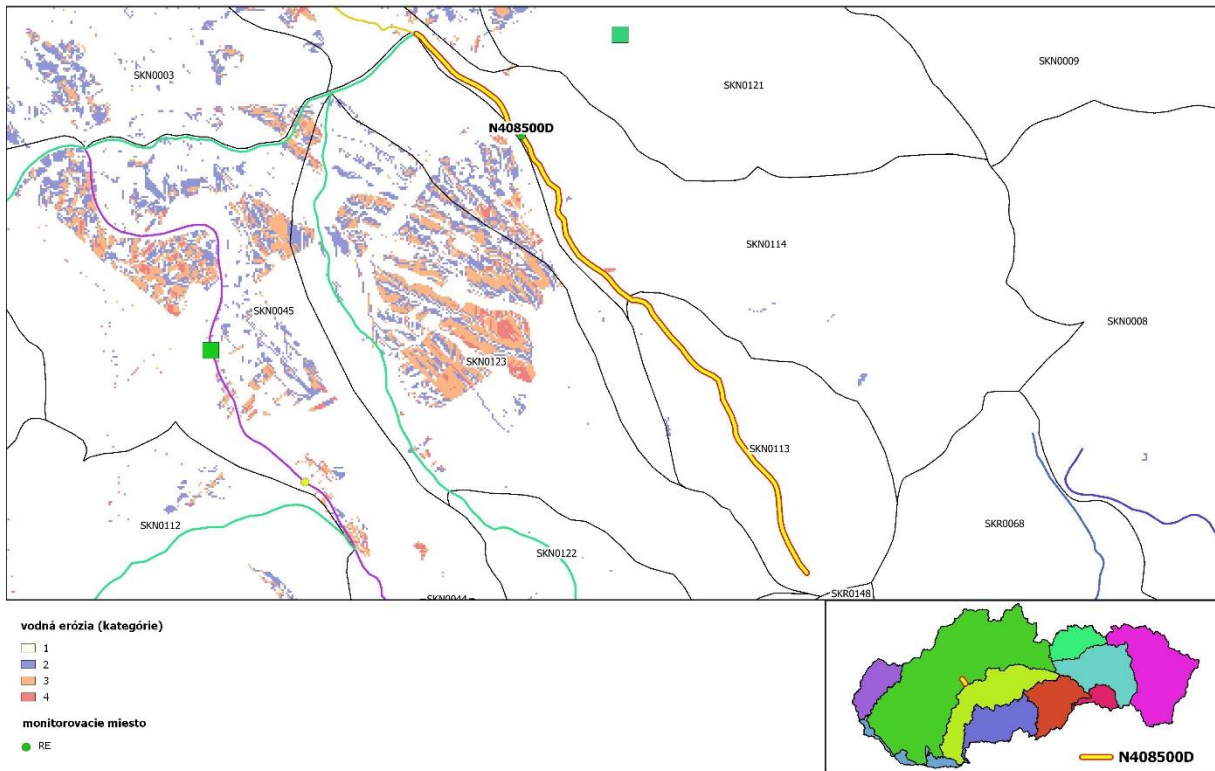
Obr.2 Analyzované povodie monitorovacieho miesta N397510D



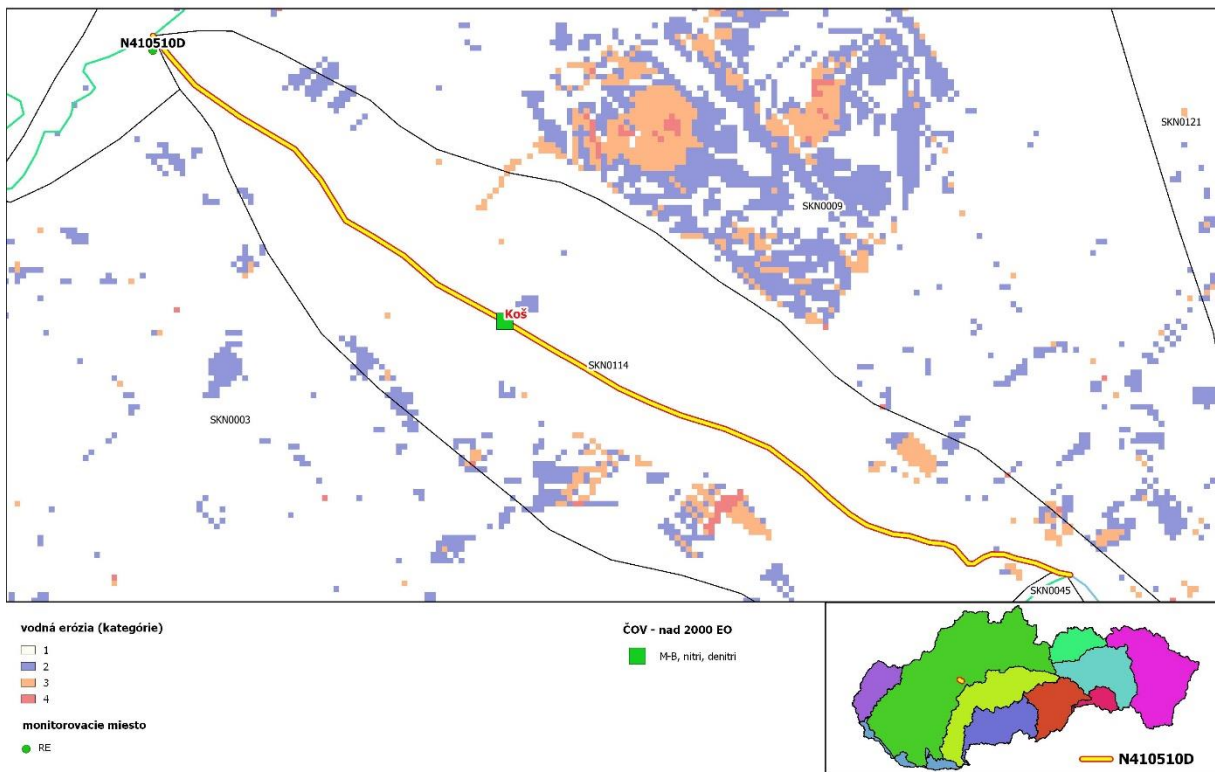
Obr.3 Analyzované povodie monitorovacieho miesta N397520D



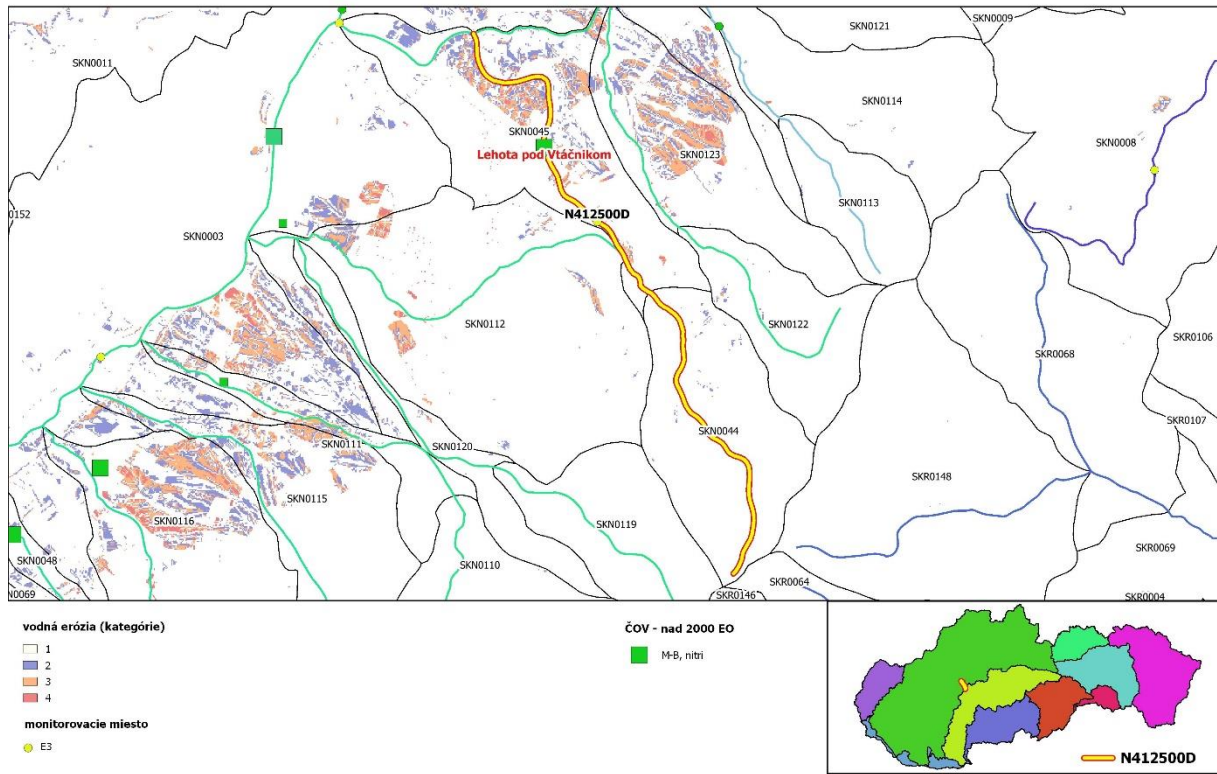
Obr.4 Analyzované povodie monitorovacieho miesta N405511D



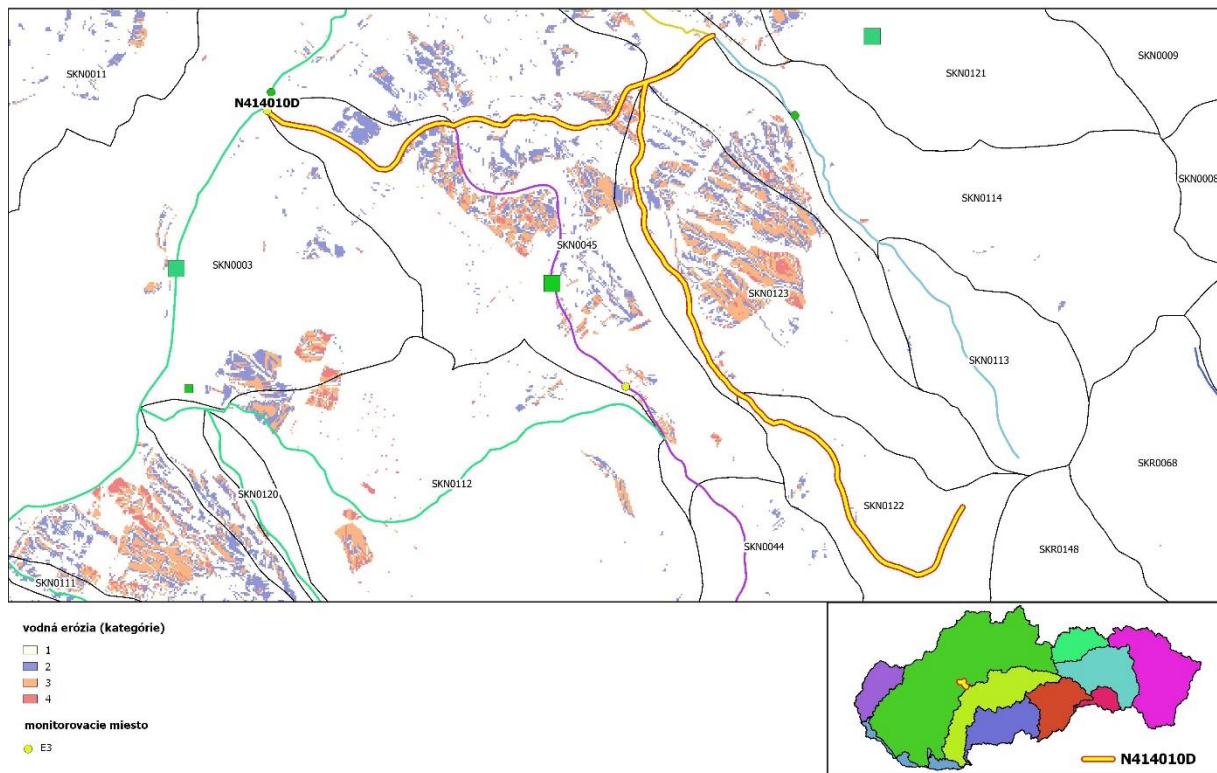
Obr.5 Analyzované povodie monitorovacieho miesta N408500D



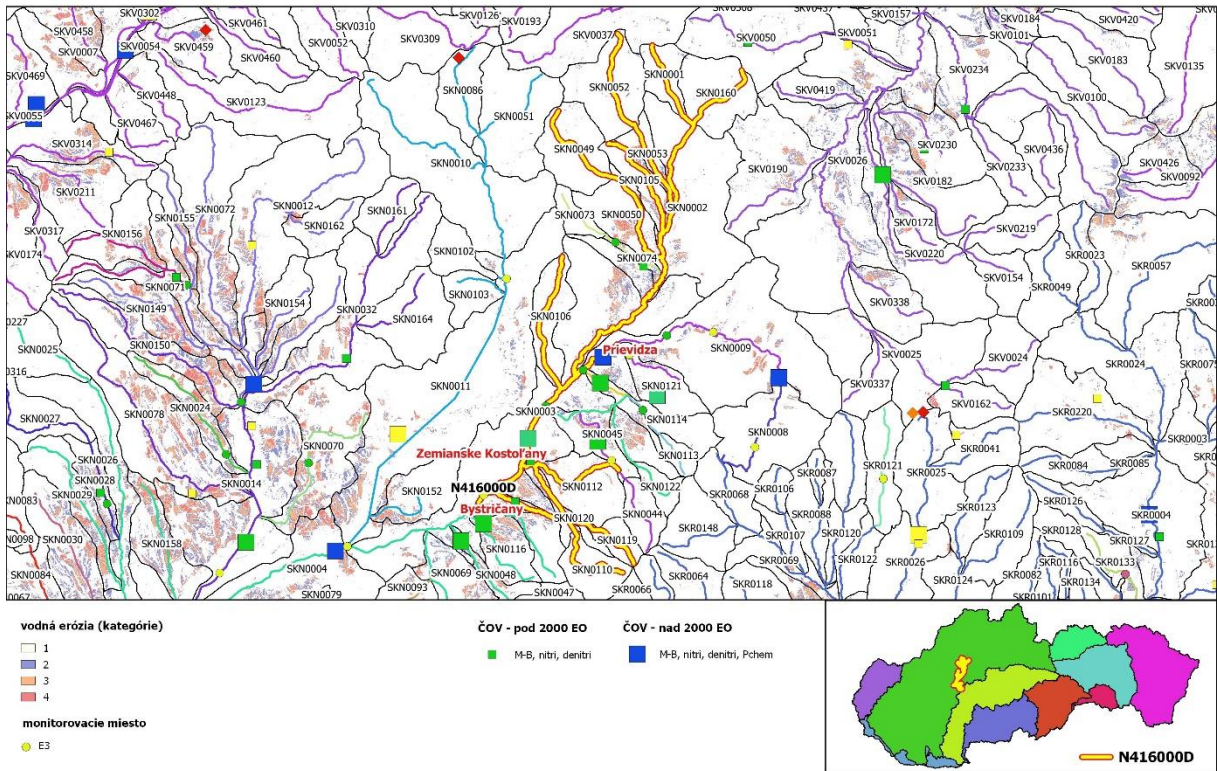
Obr.6 Analyzované povodie monitorovacieho miesta N410510D



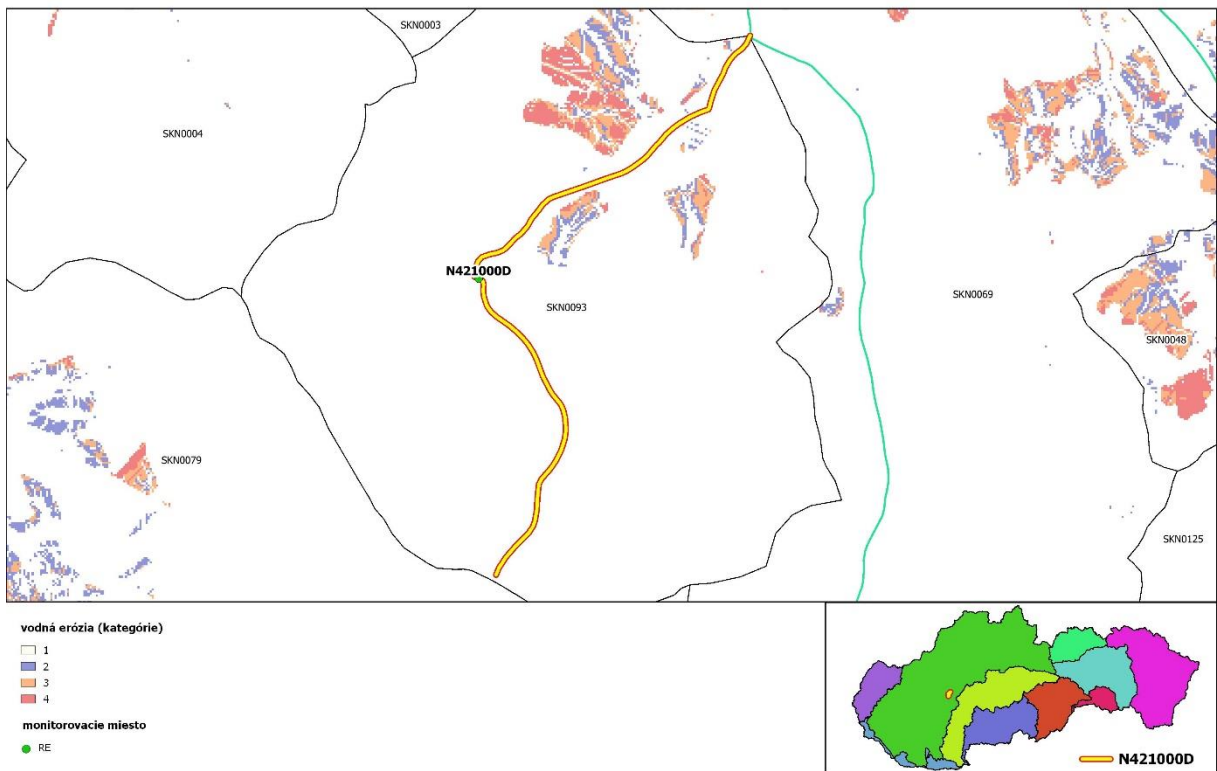
Obr.7 Analyzované povodie monitorovacieho miesta N412500D



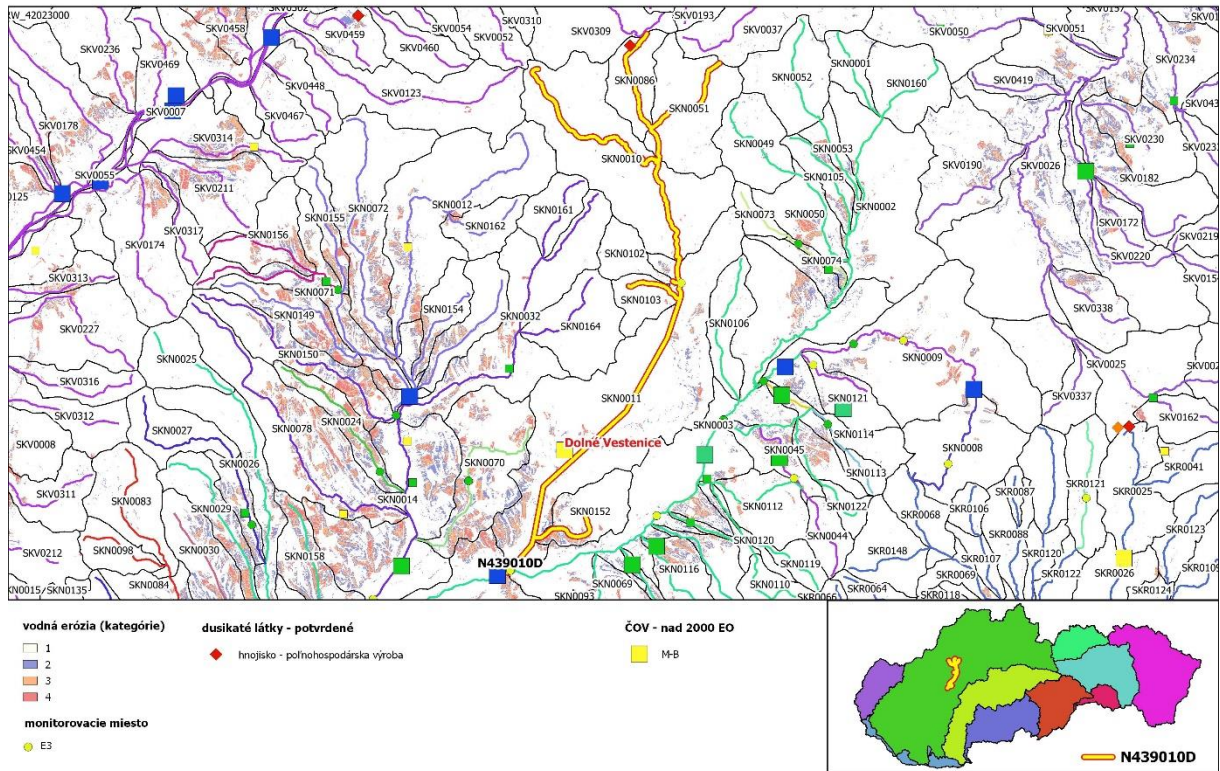
Obr.8 Analyzované povodie monitorovacieho miesta N414010D



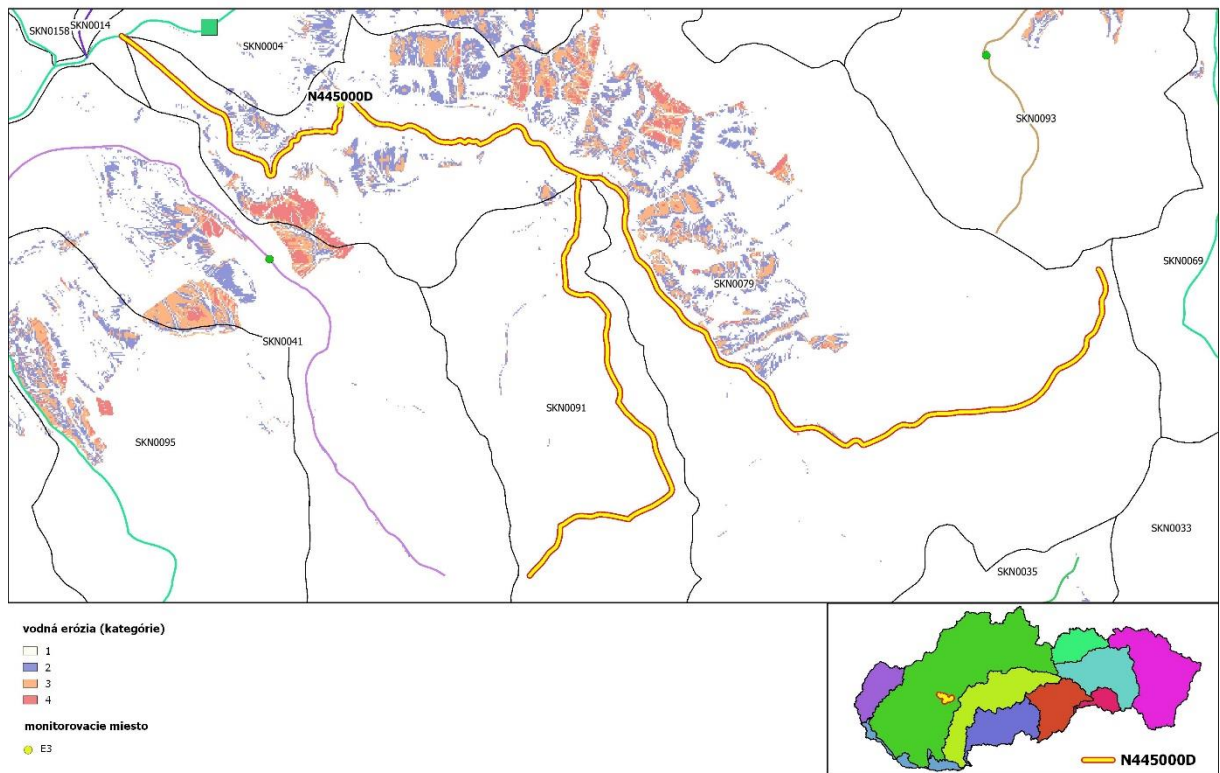
Obr.9 Analyzované povodie monitorovacieho miesta N416000D



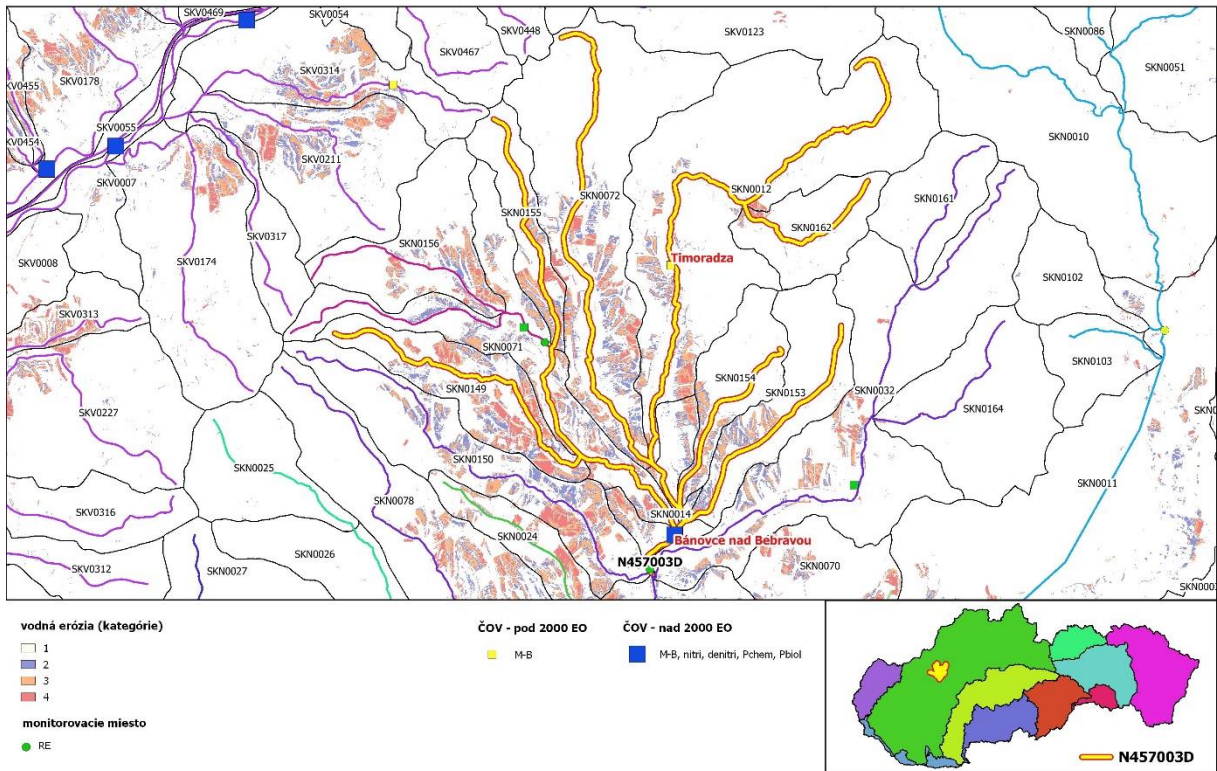
Obr.10 Analyzované povodie monitorovacieho miesta N421000D



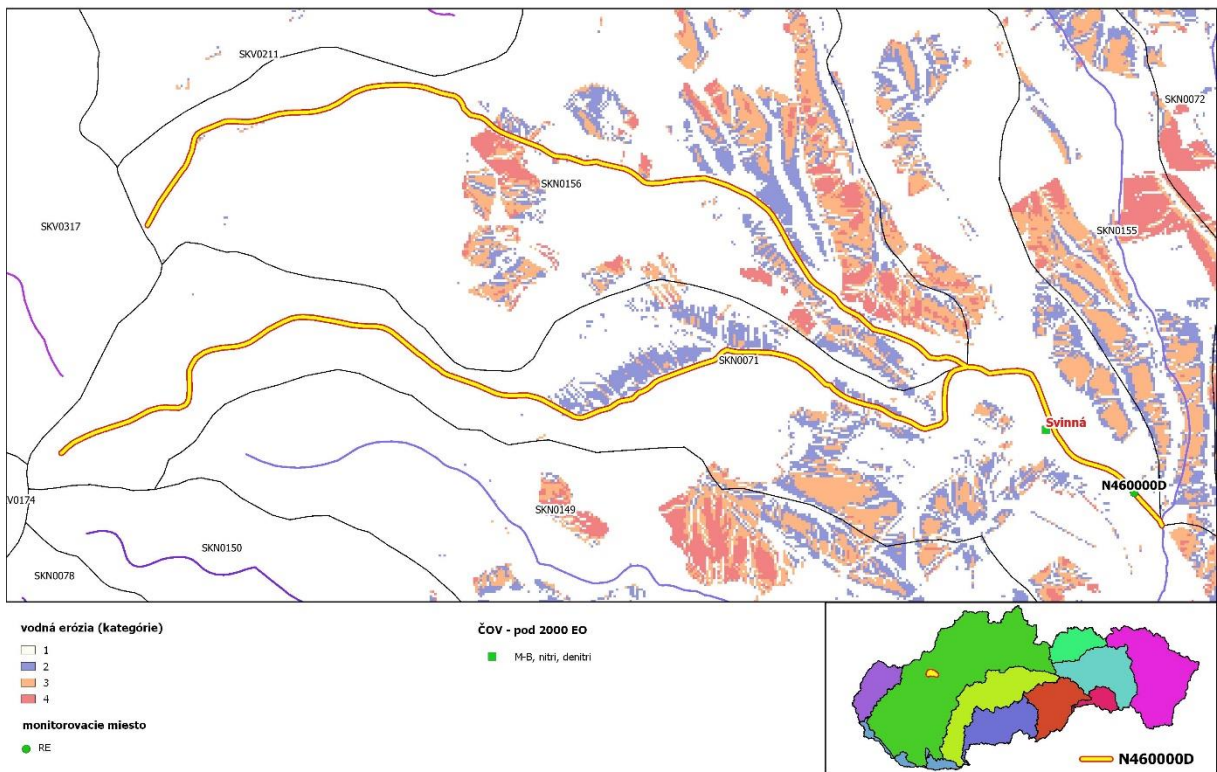
Obr.11 Analyzované povodie monitorovacieho miesta N439010D



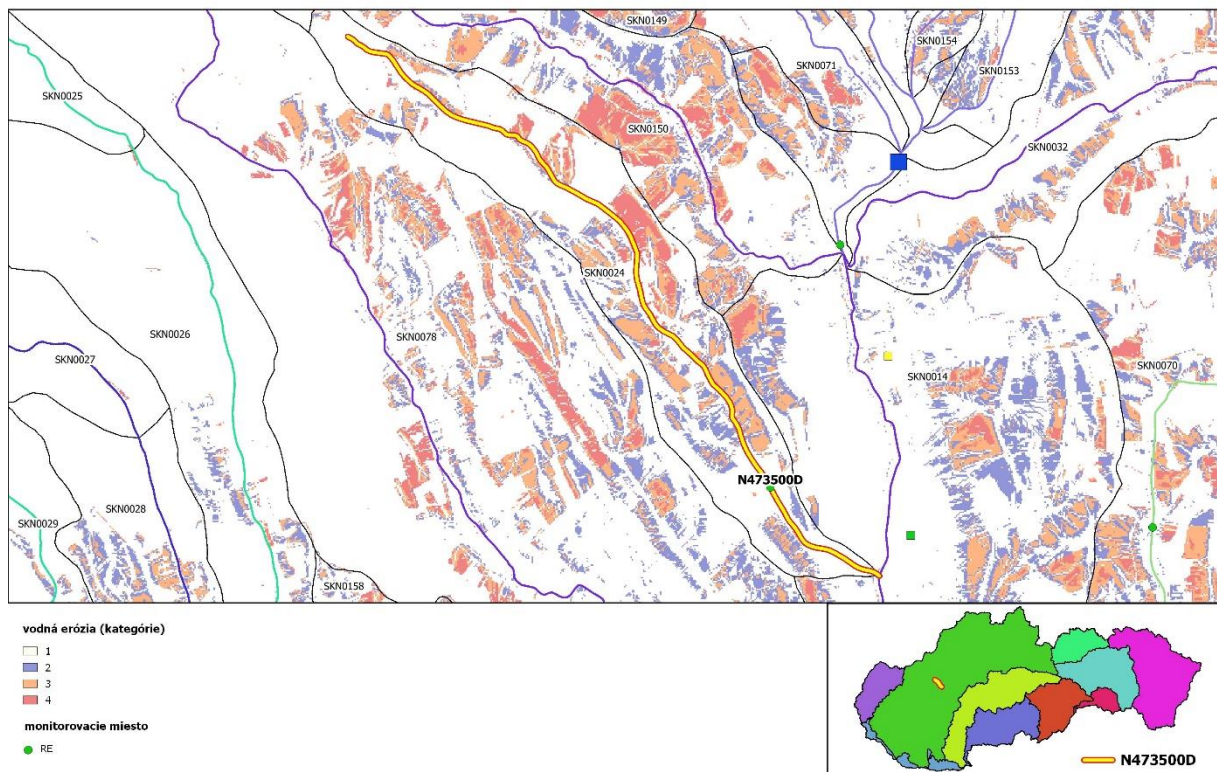
Obr.12 Analyzované povodie monitorovacieho miesta N445000D



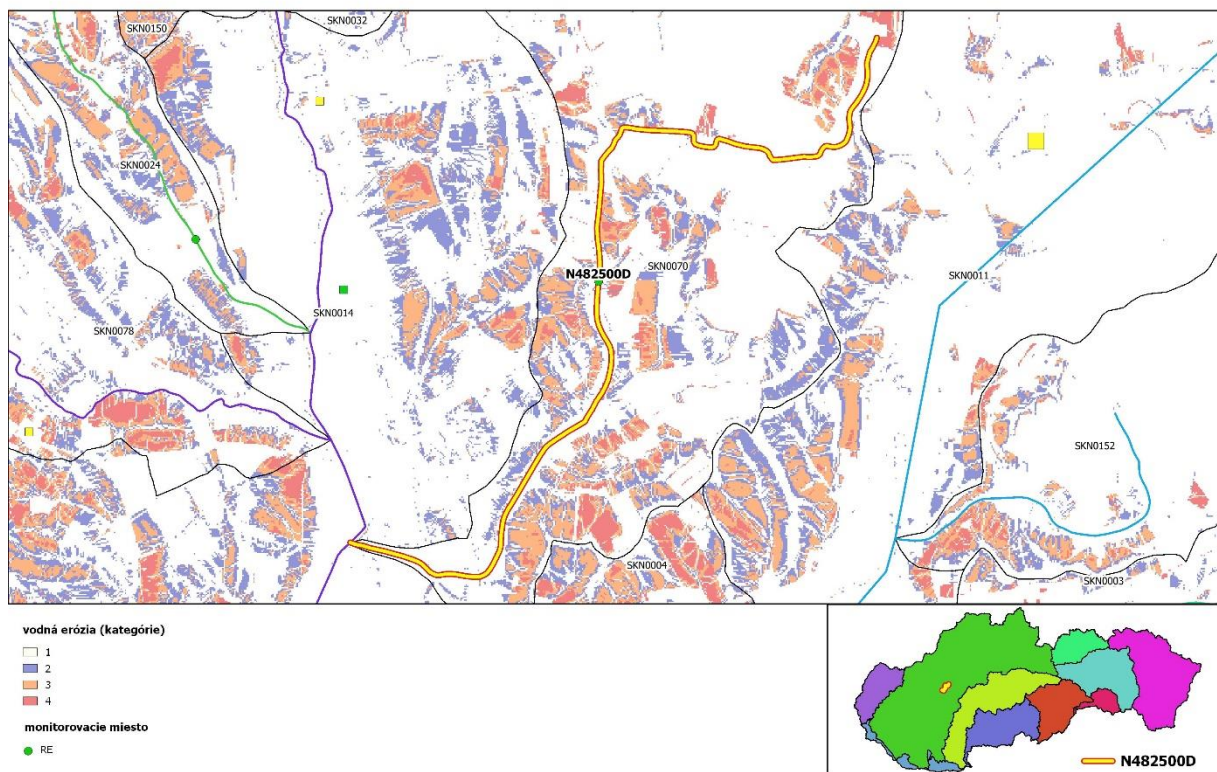
Obr.13 Analyzované povodie monitorovacieho miesta N447003D



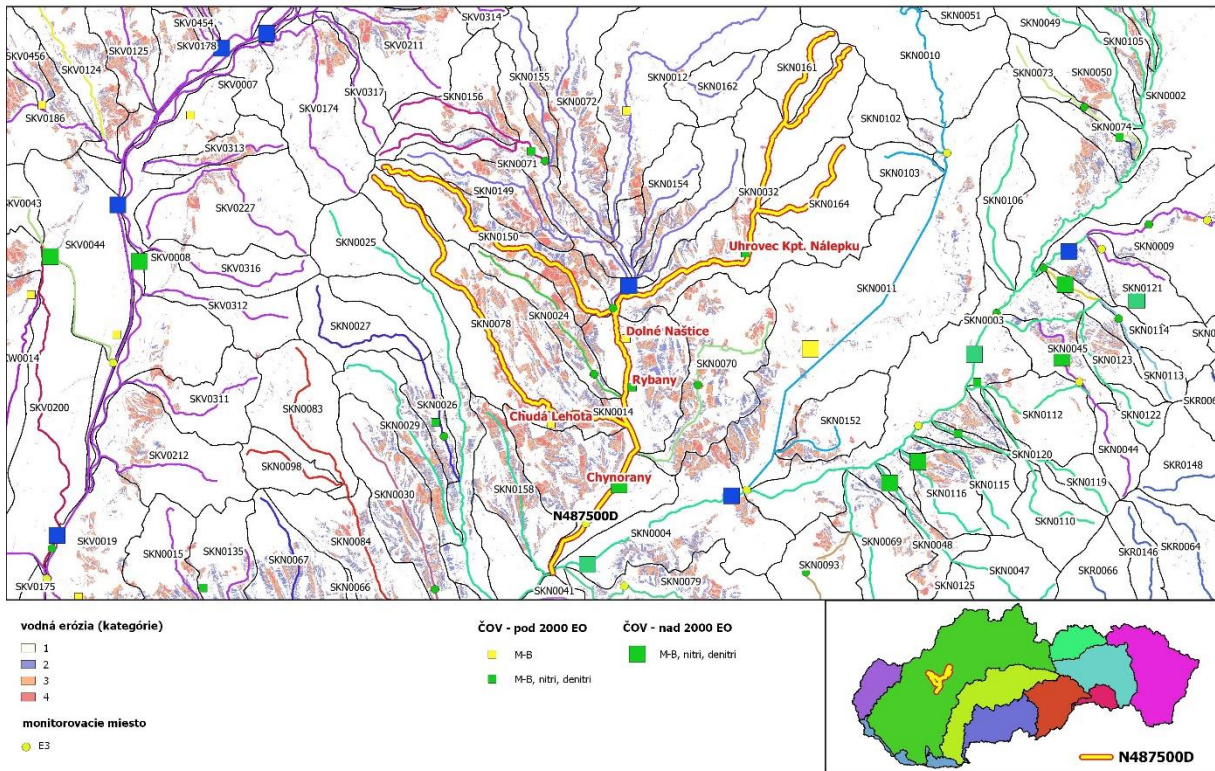
Obr.14 Analyzované povodie monitorovacieho miesta N460000D



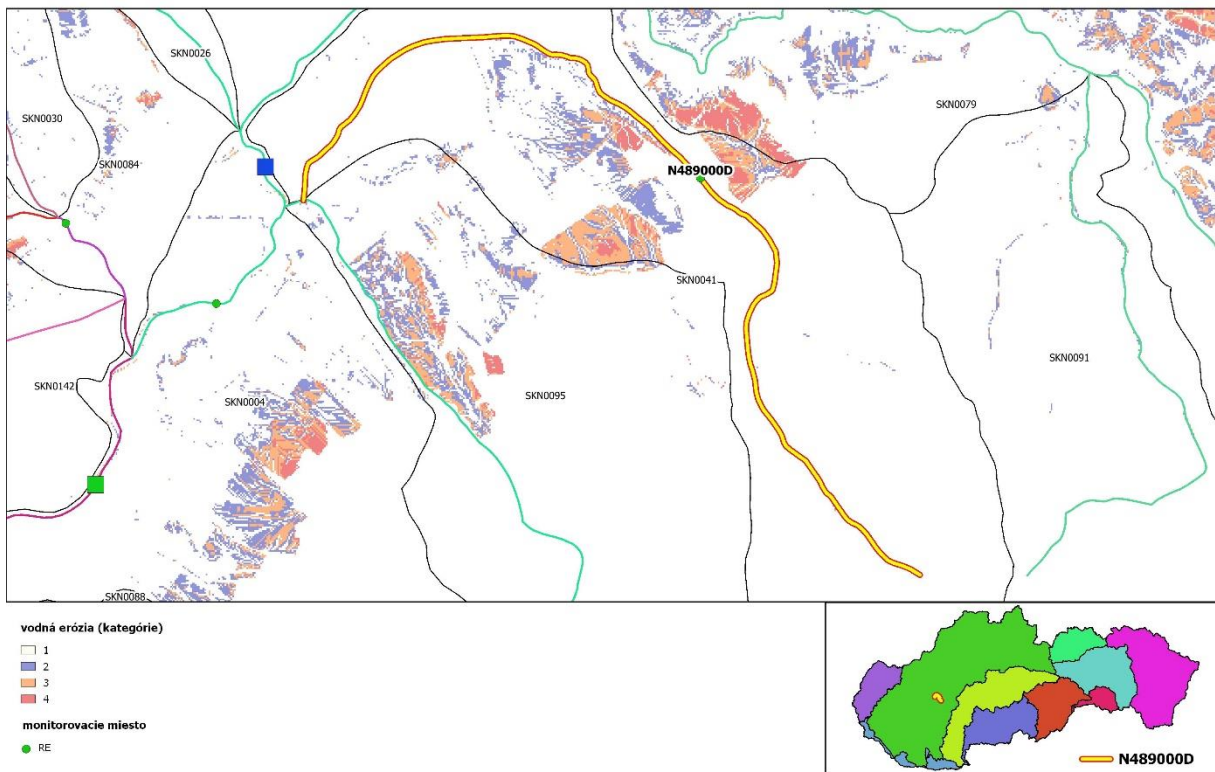
Obr.15 Analyzované povodie monitorovacieho miesta N473500D



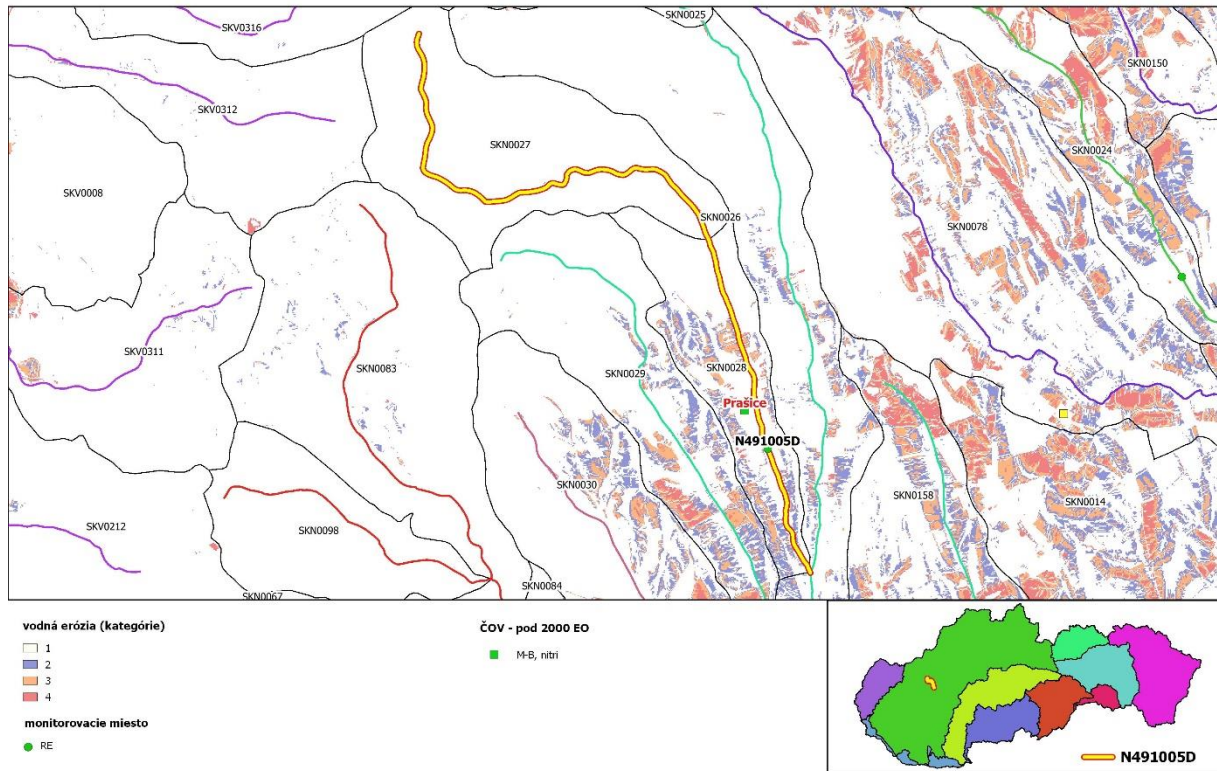
Obr.16 Analyzované povodie monitorovacieho miesta N482500D



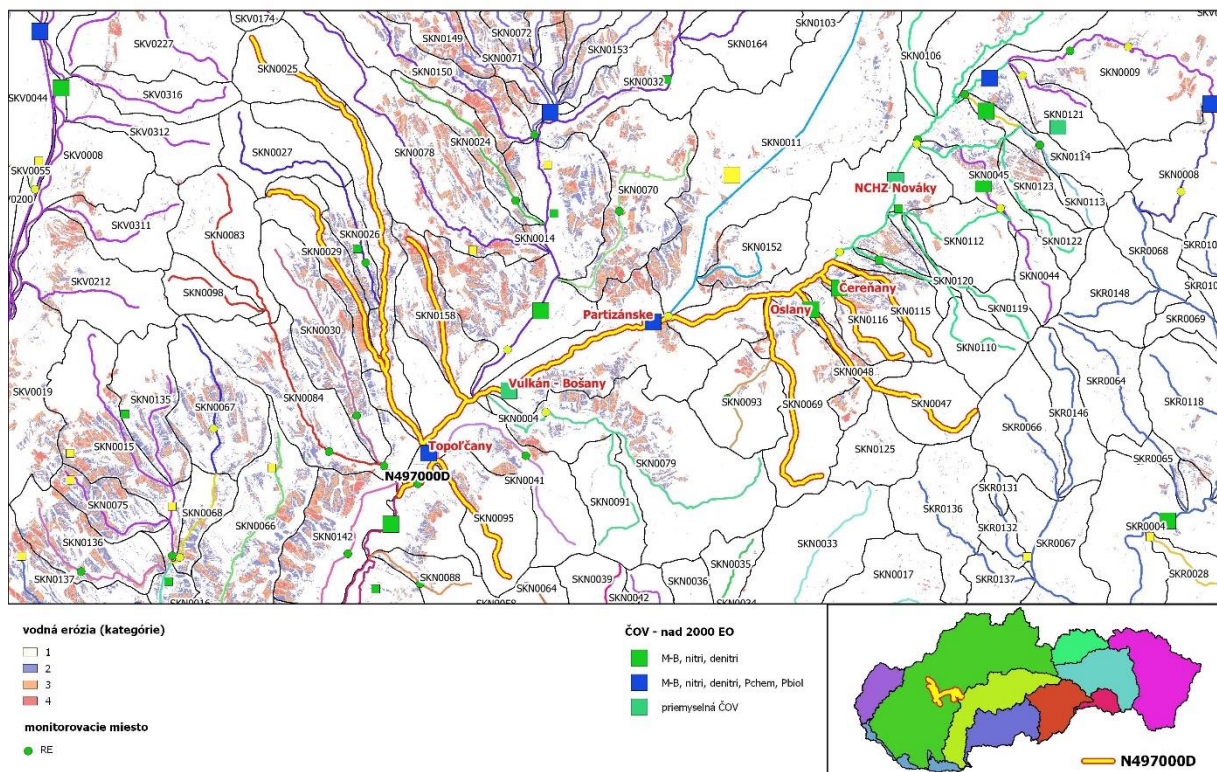
Obr.17 Analyzované povodie monitorovacieho miesta N487500D



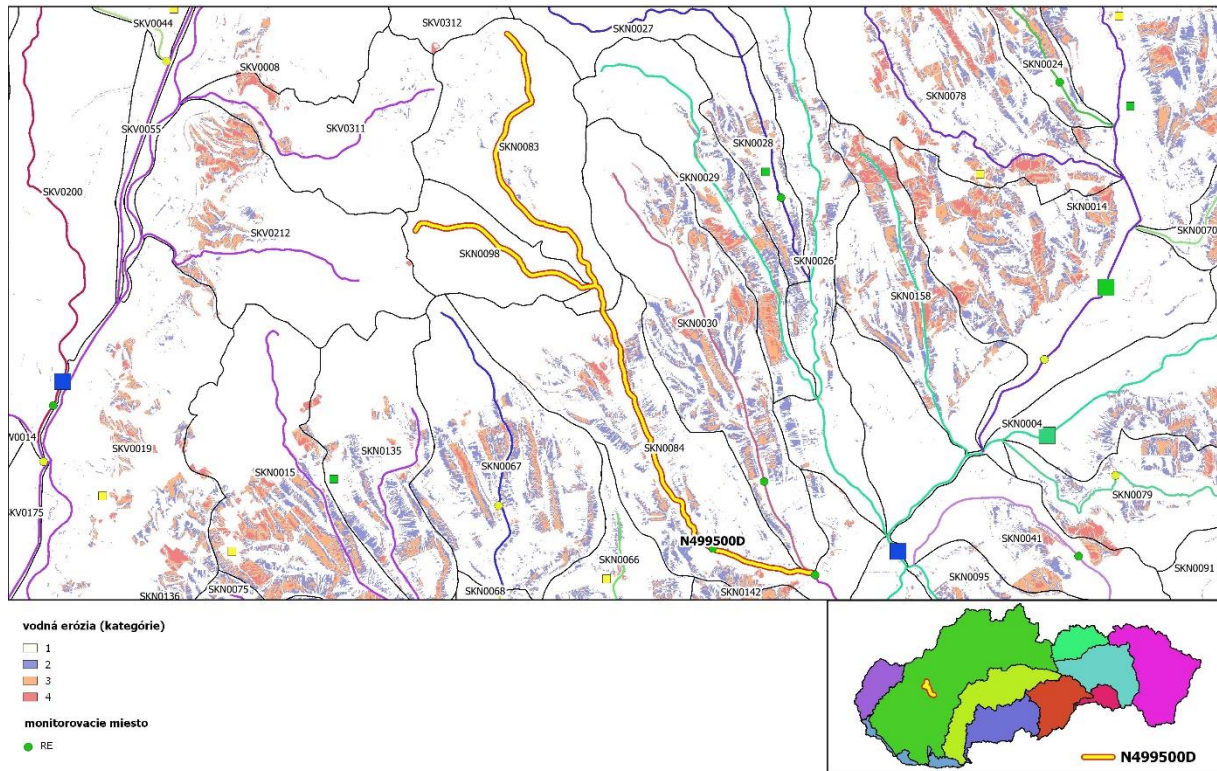
Obr.18 Analyzované povodie monitorovacieho miesta N489000D



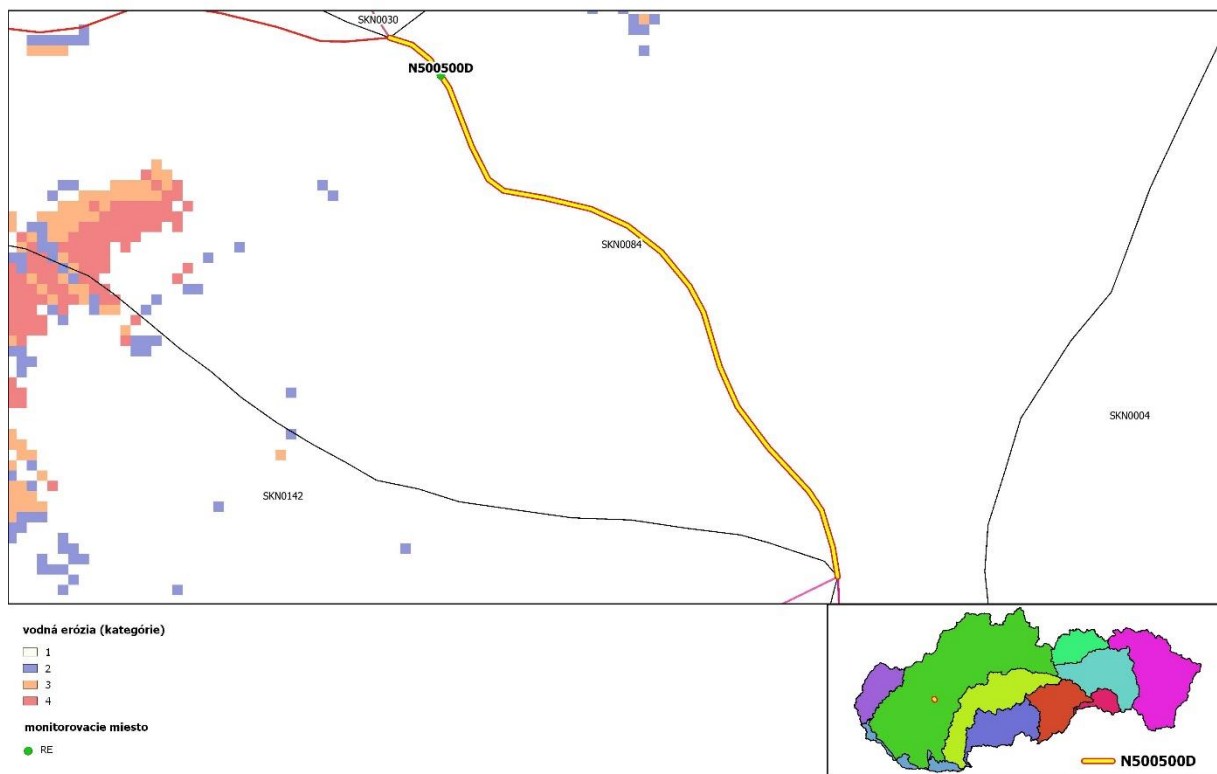
Obr.19 Analyzované povodie monitorovacieho miesta N491005D



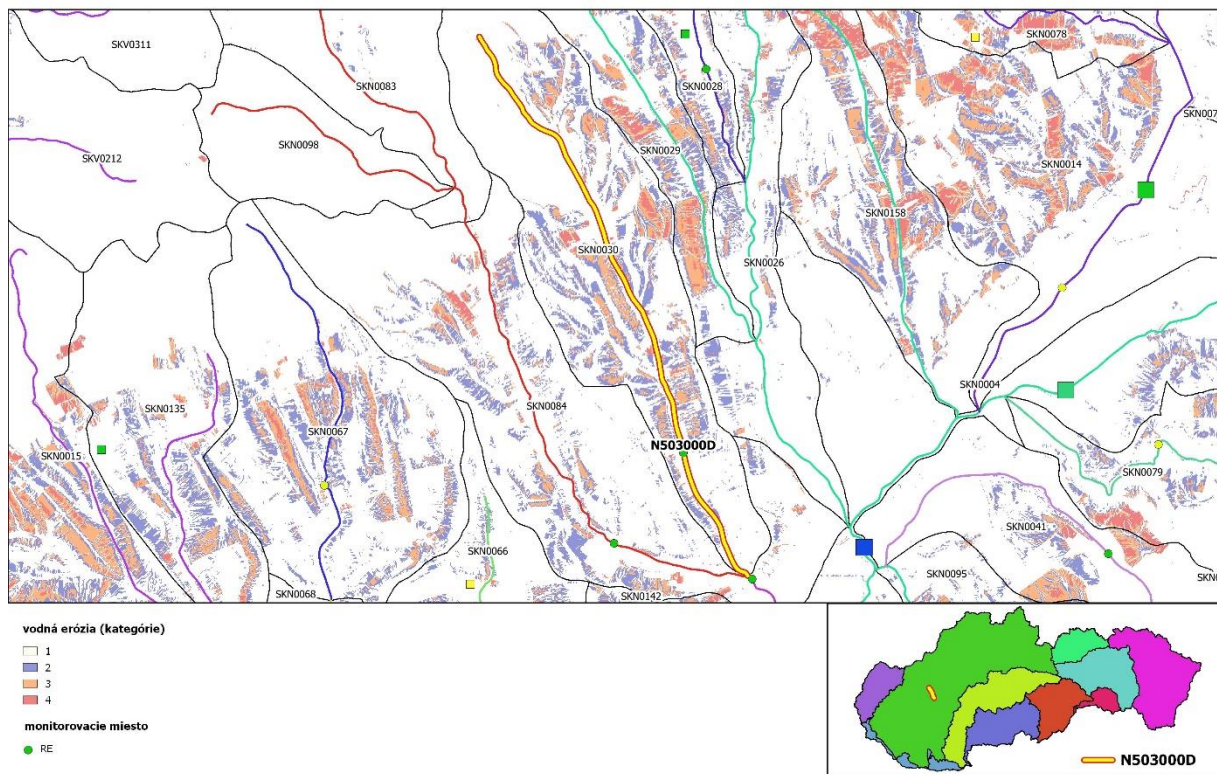
Obr.20 Analyzované povodie monitorovacieho miesta N497000D



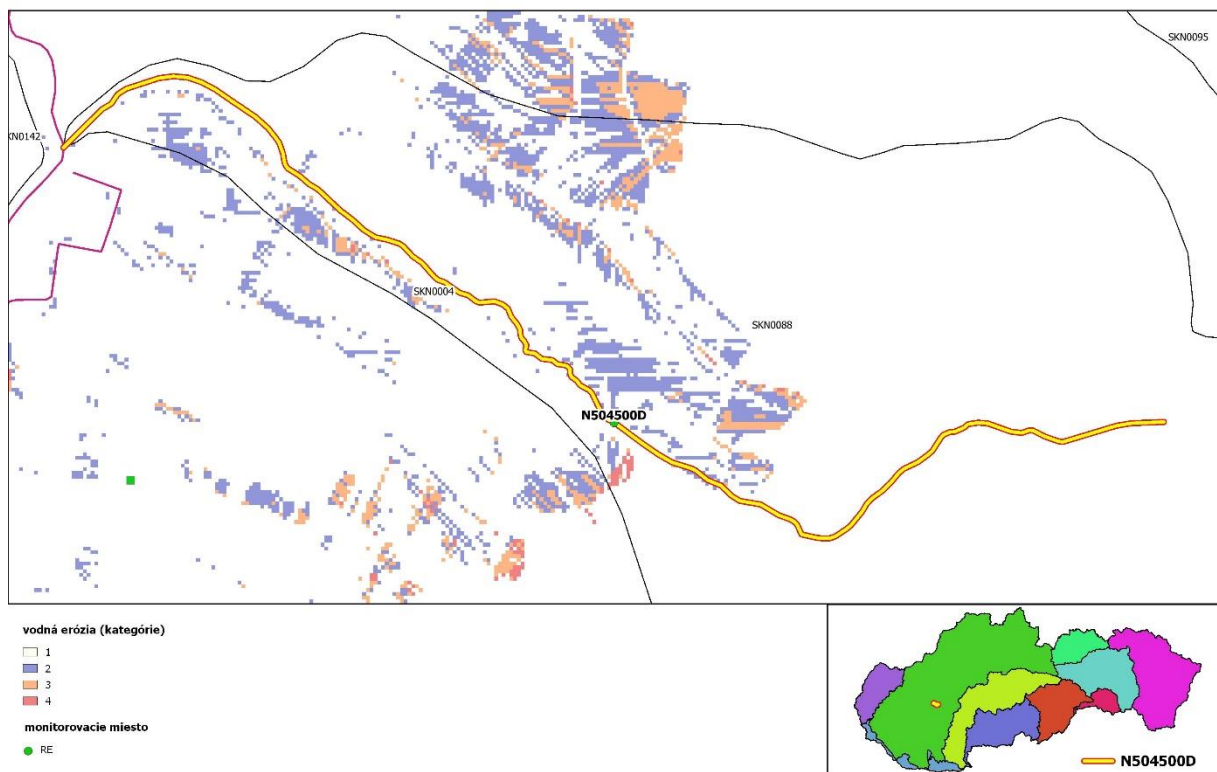
Obr.21 Analyzované povodie monitorovacieho miesta N499500D



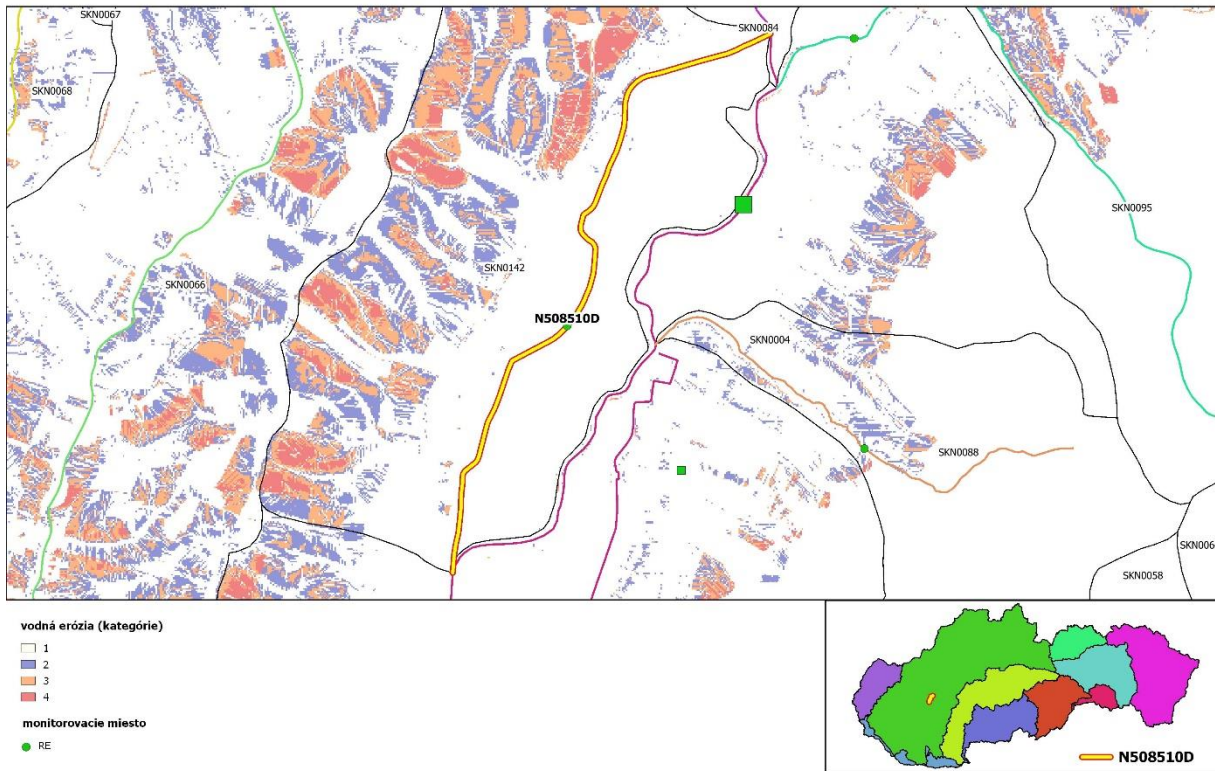
Obr.22 Analyzované povodie monitorovacieho miesta N500500D



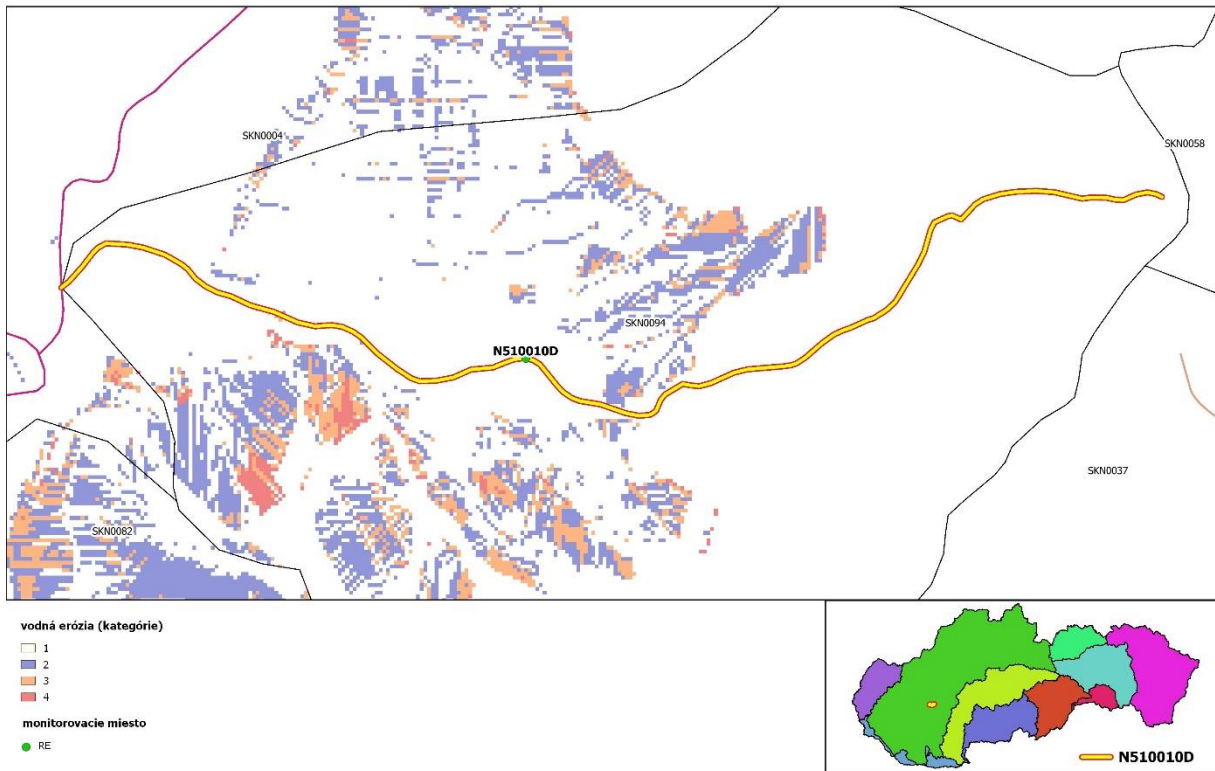
Obr.23 Analyzované povodie monitorovacieho miesta N503000D



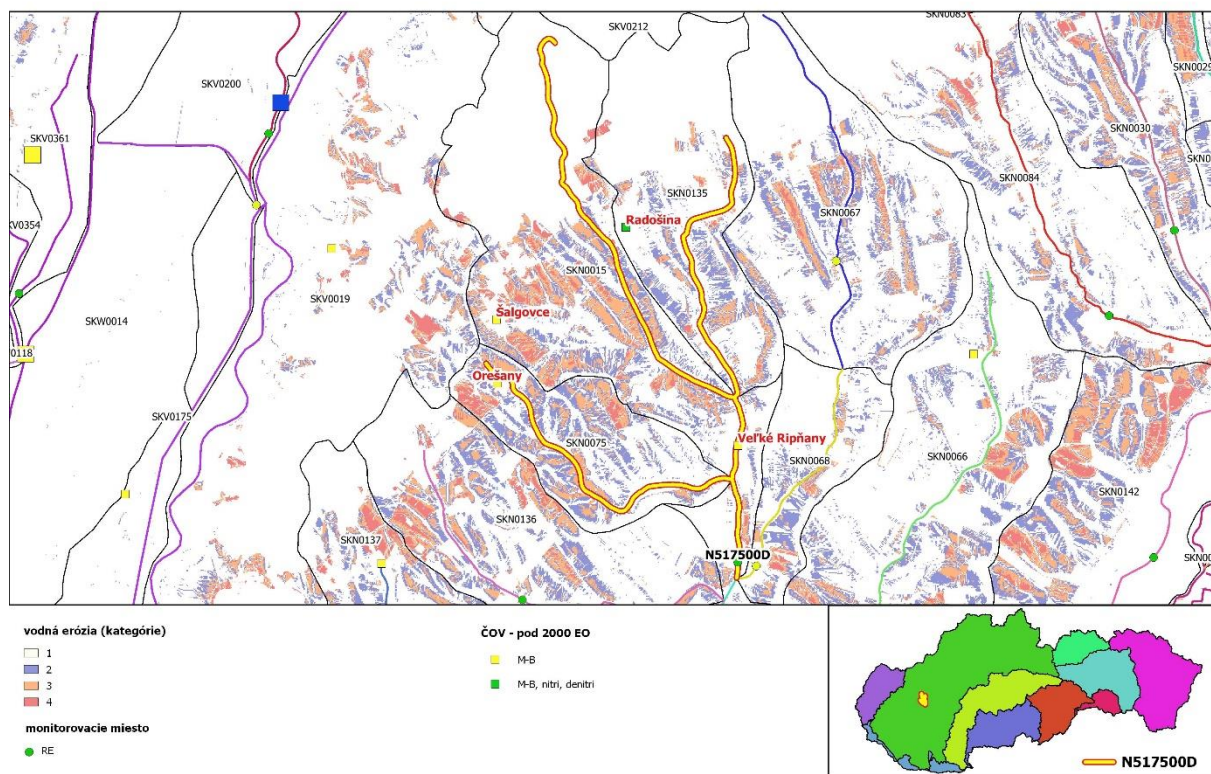
Obr.24 Analyzované povodie monitorovacieho miesta N504500D



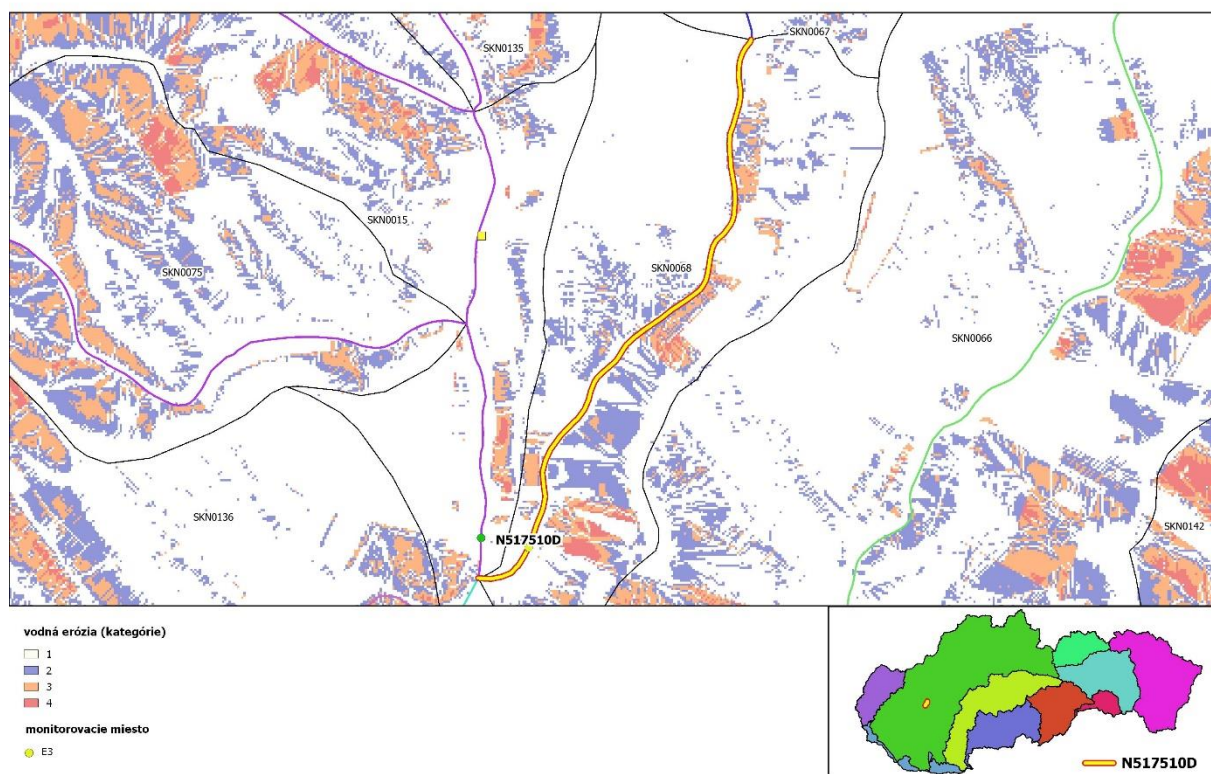
Obr.25 Analyzované povodie monitorovacieho miesta N508510D



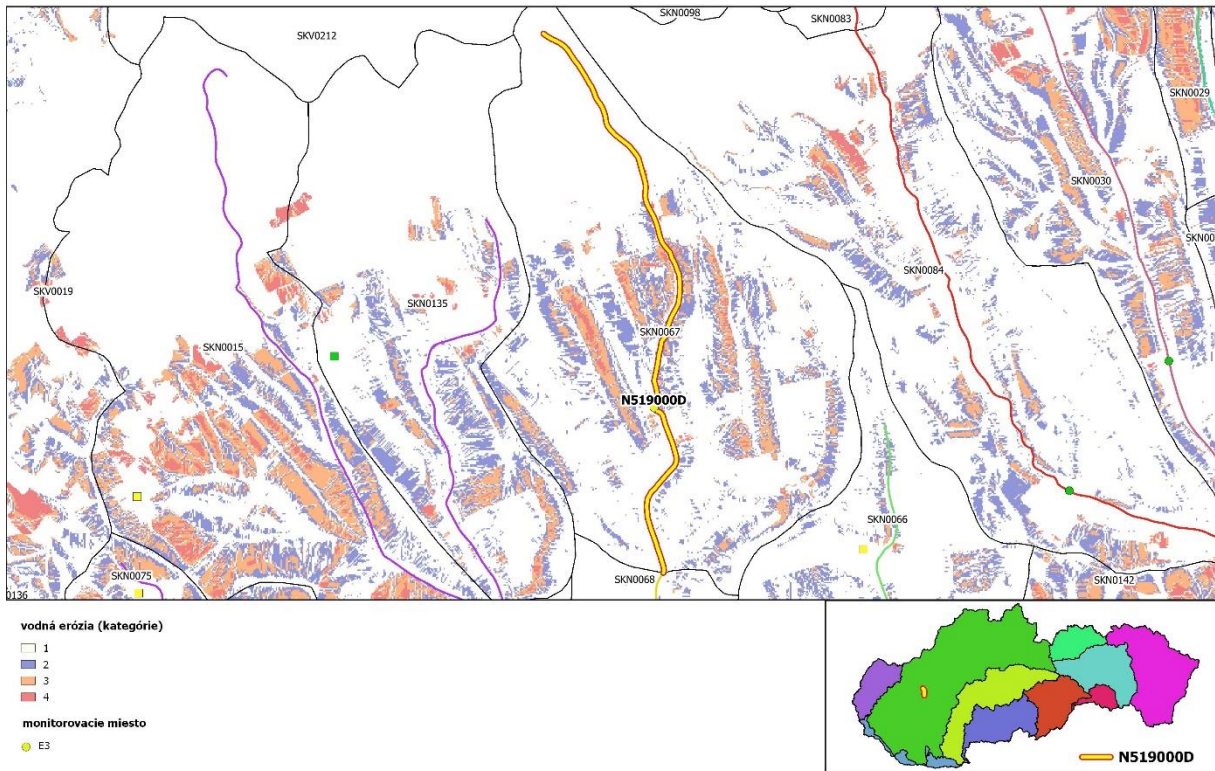
Obr.26 Analyzované povodie monitorovacieho miesta N510010D



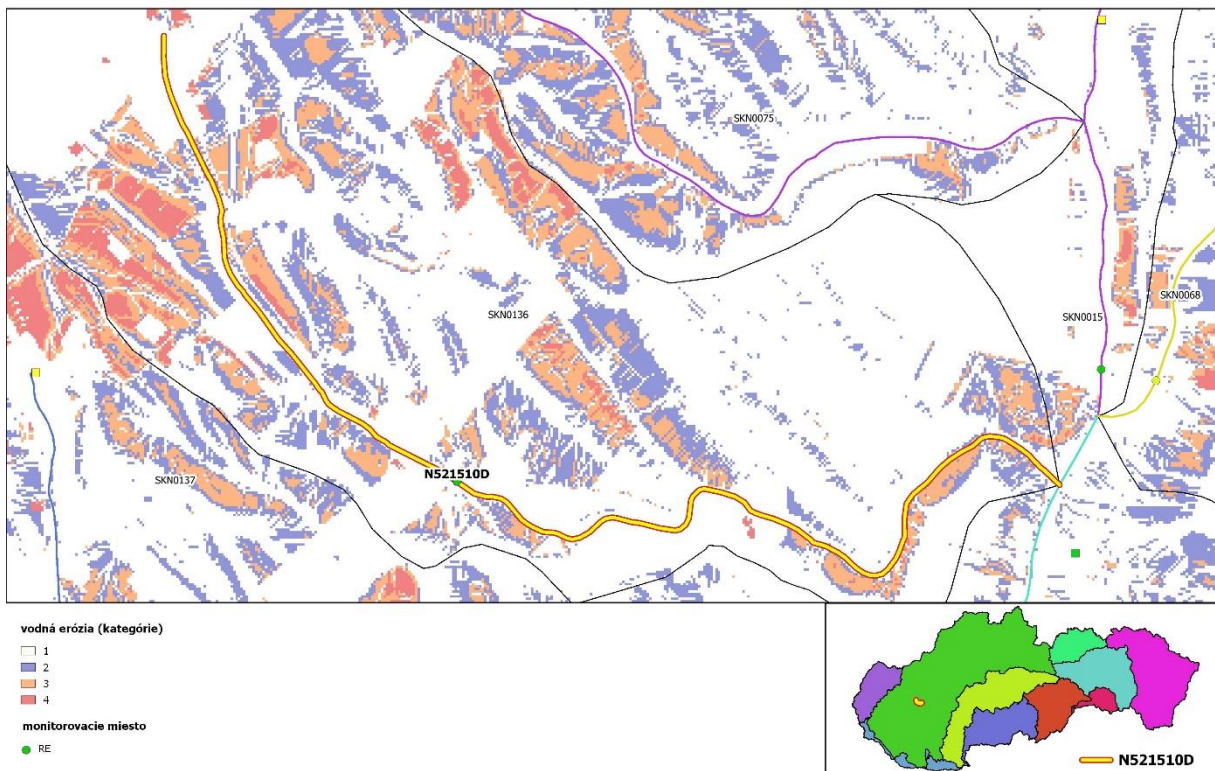
Obr.27 Analyzované povodie monitorovacieho miesta N517500D



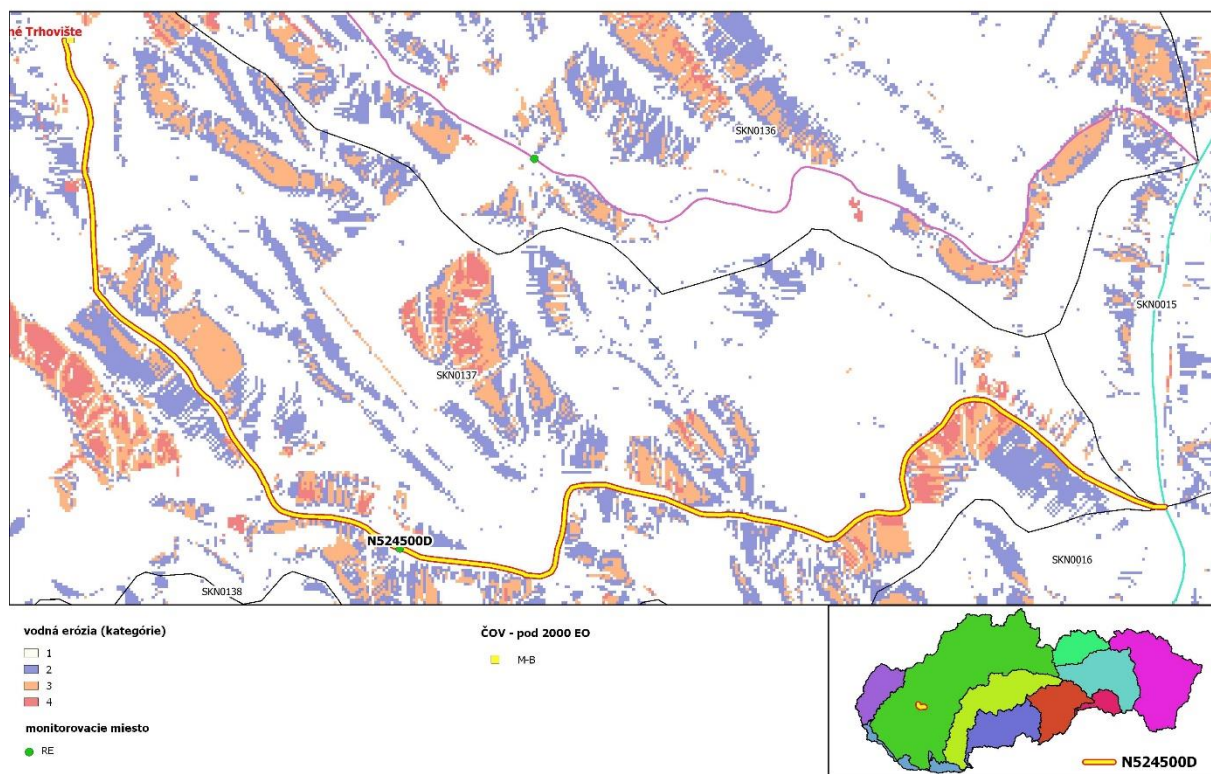
Obr.28 Analyzované povodie monitorovacieho miesta N517510D



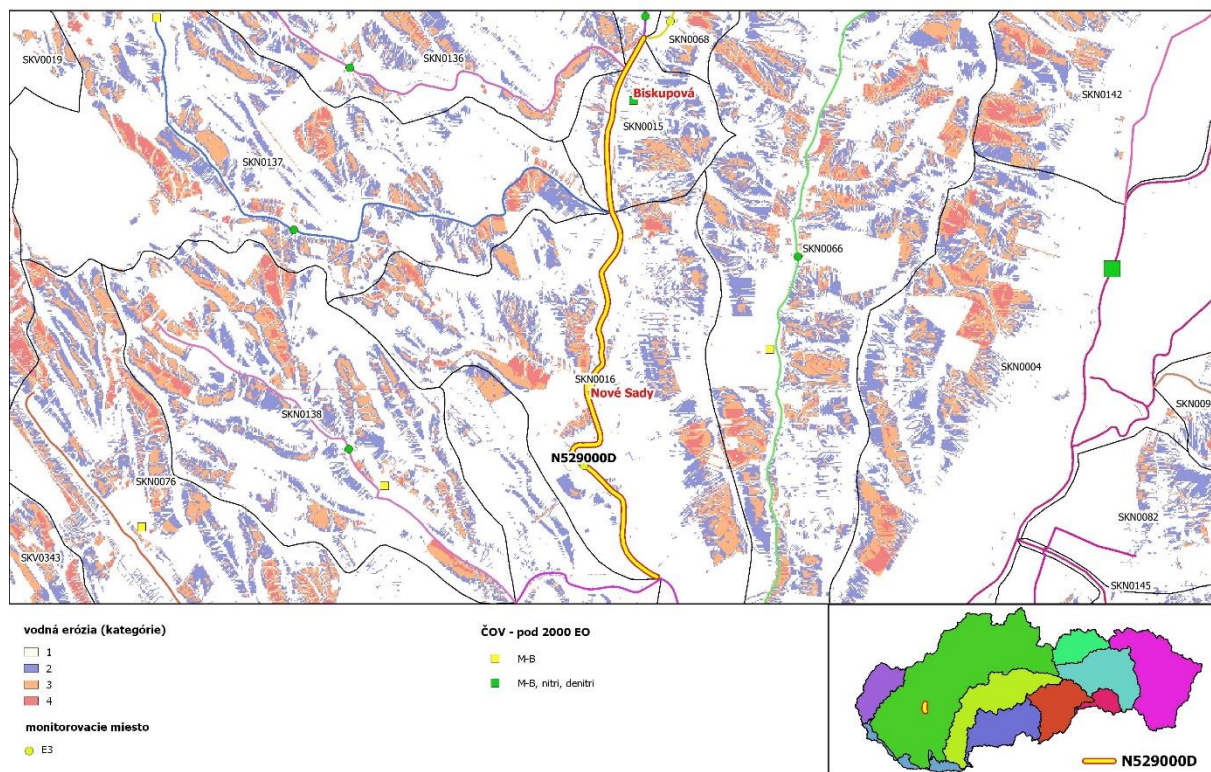
Obr.29 Analyzované povodie monitorovacieho miesta N519000D



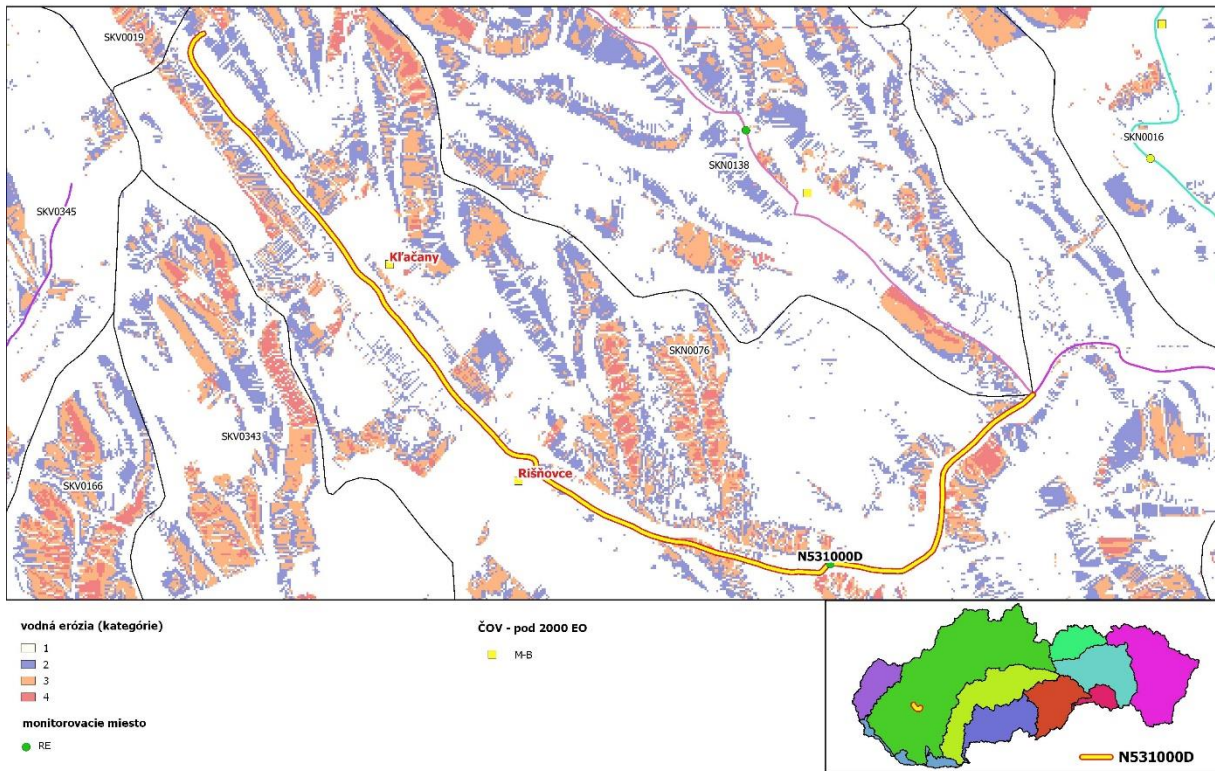
Obr.30 Analyzované povodie monitorovacieho miesta N521510D



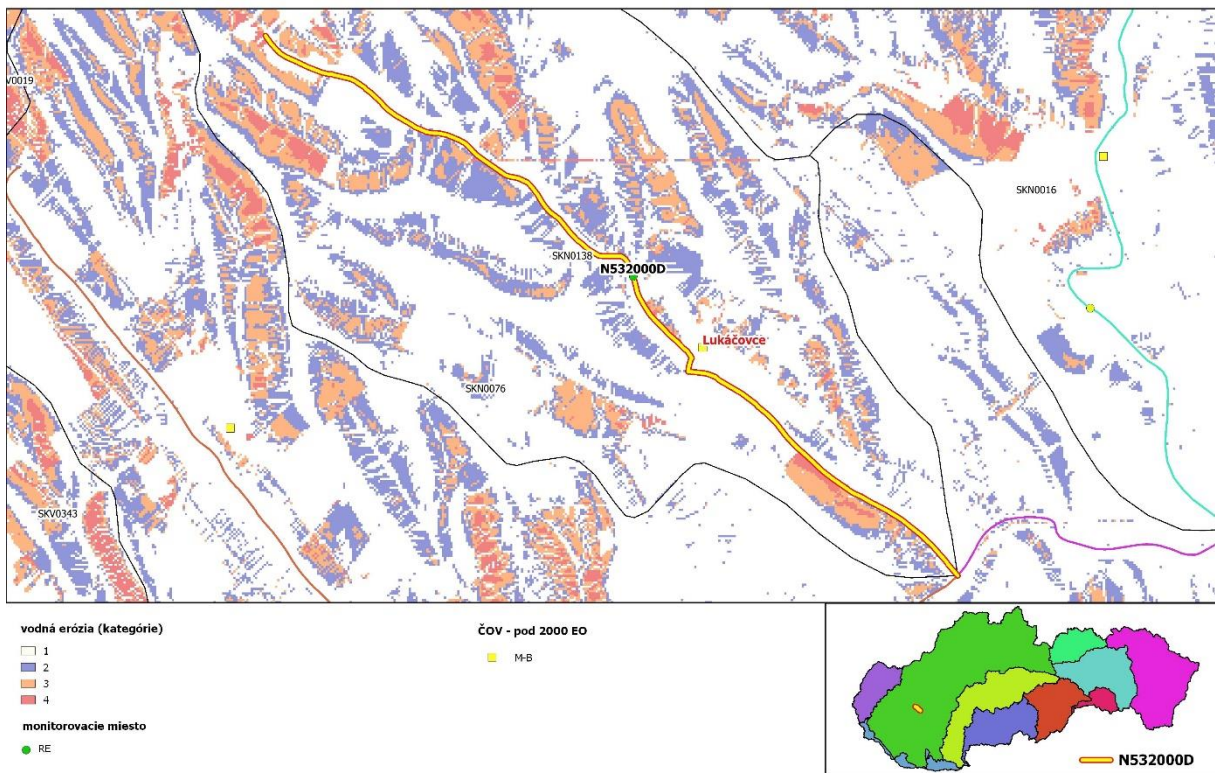
Obr.31 Analyzované povodie monitorovacieho miesta N524500D



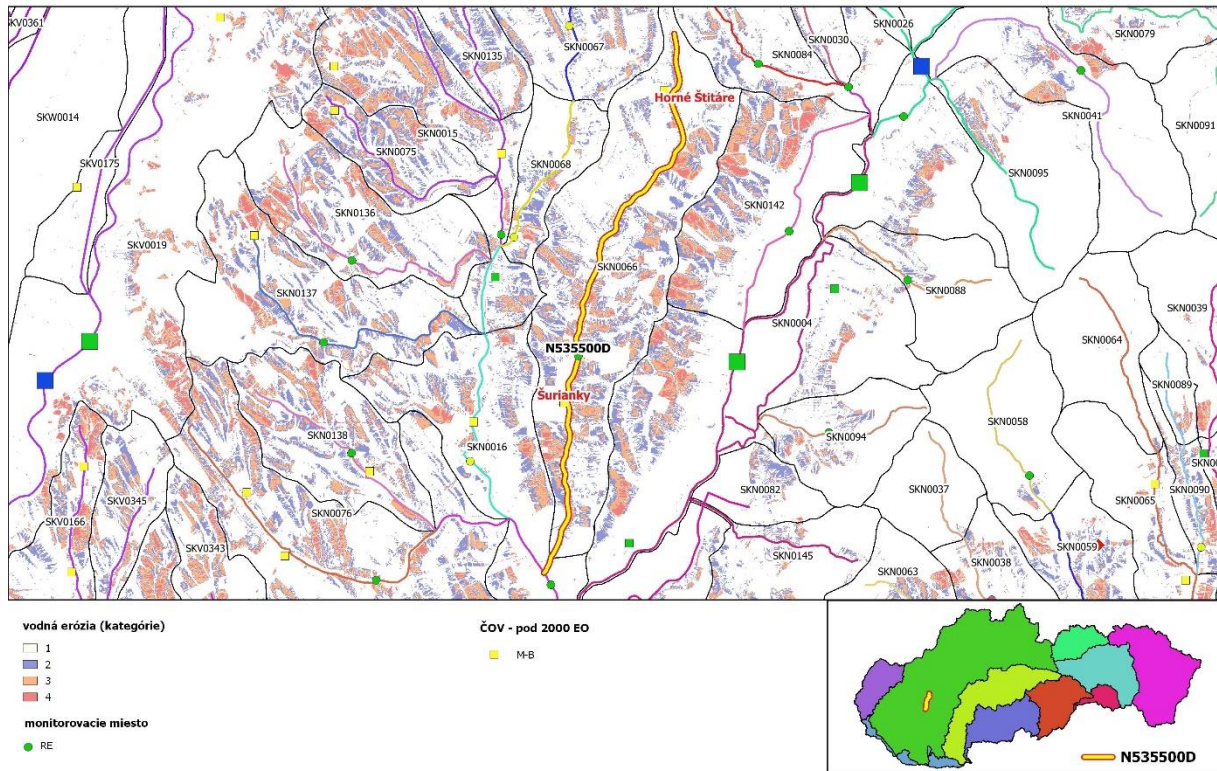
Obr.32 Analyzované povodie monitorovacieho miesta N529000D



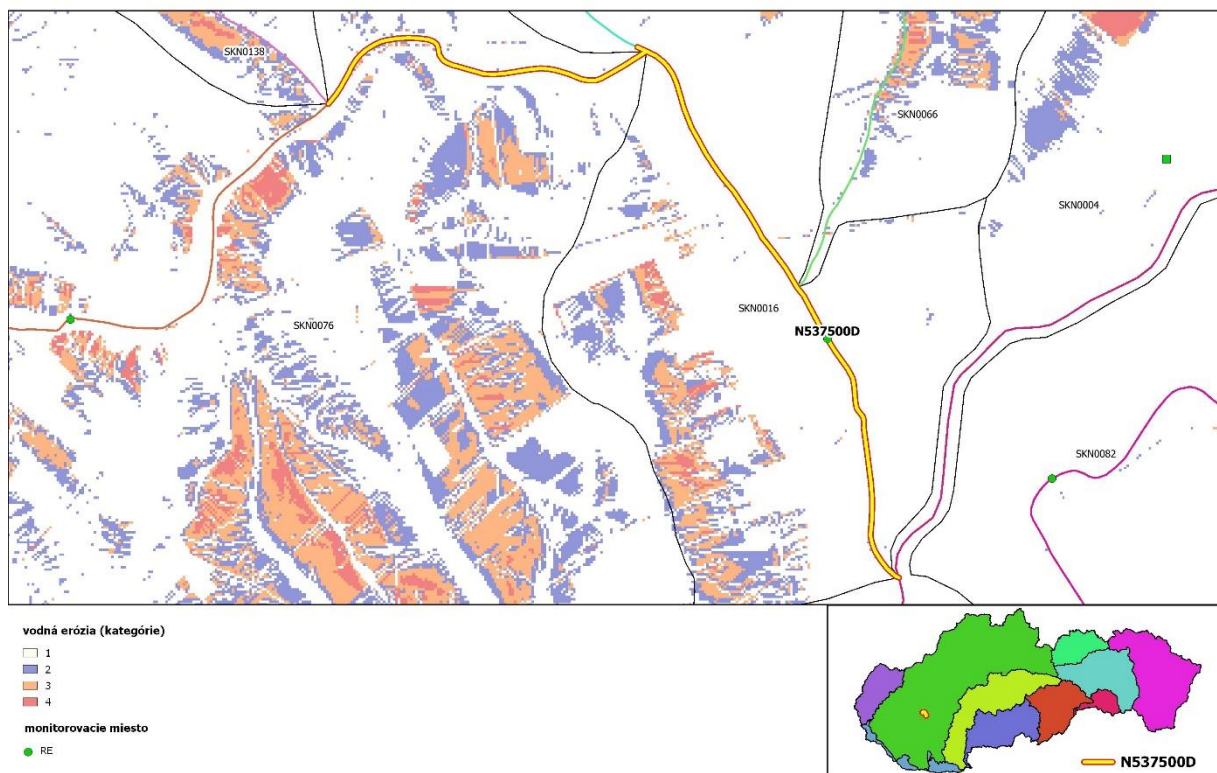
Obr.33 Analyzované povodie monitorovacieho miesta N531000D



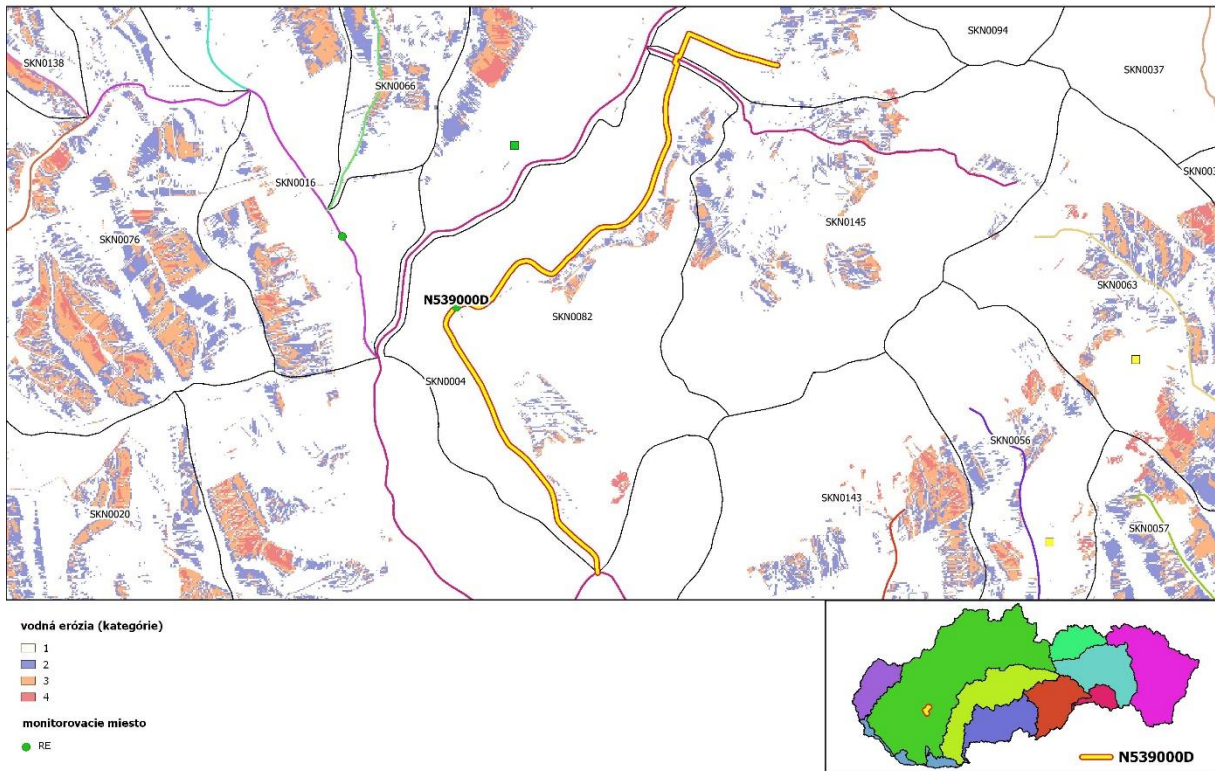
Obr.34 Analyzované povodie monitorovacieho miesta N532000D



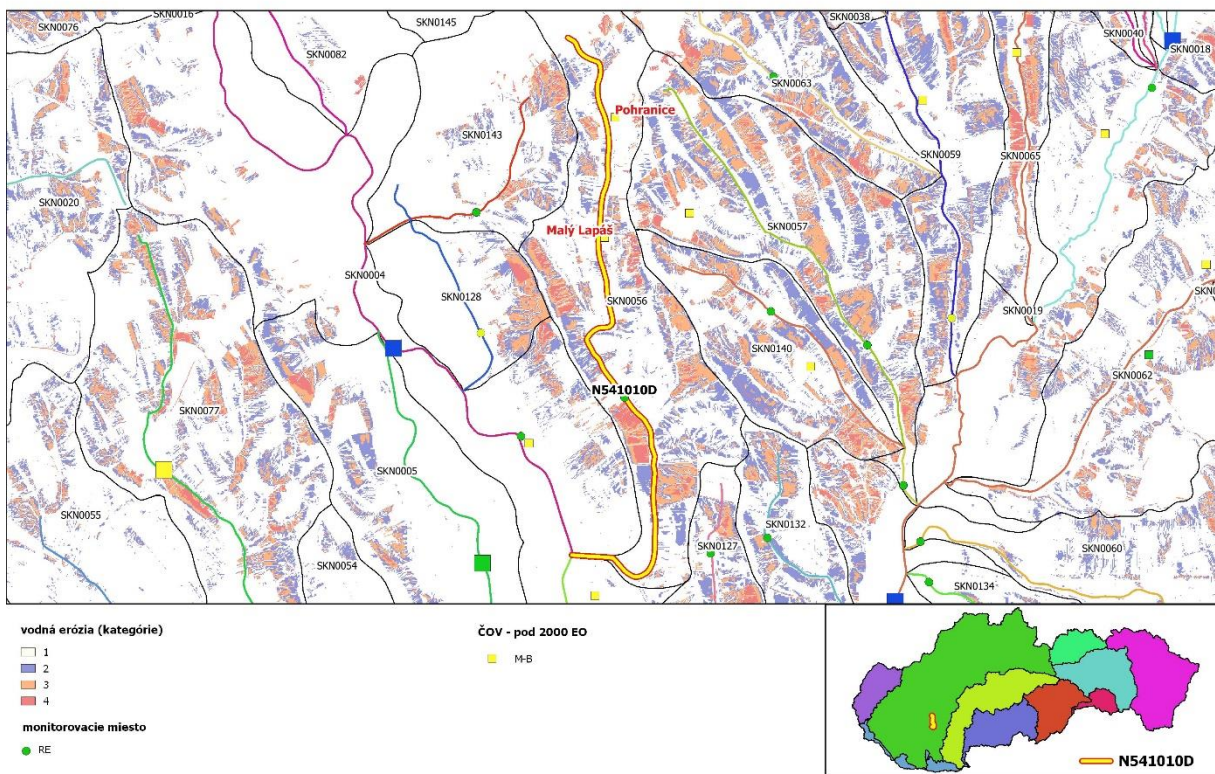
Obr.35 Analyzované povodie monitorovacieho miesta N535500D



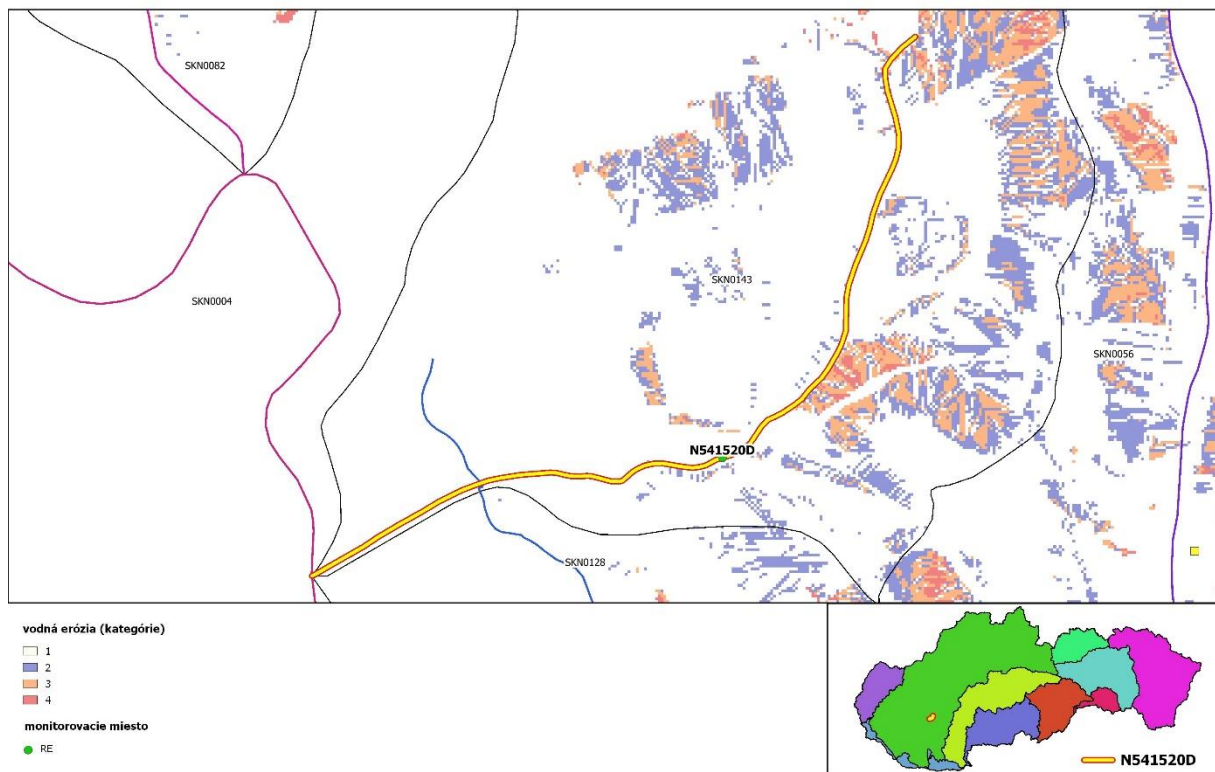
Obr.36 Analyzované povodie monitorovacieho miesta N537500D



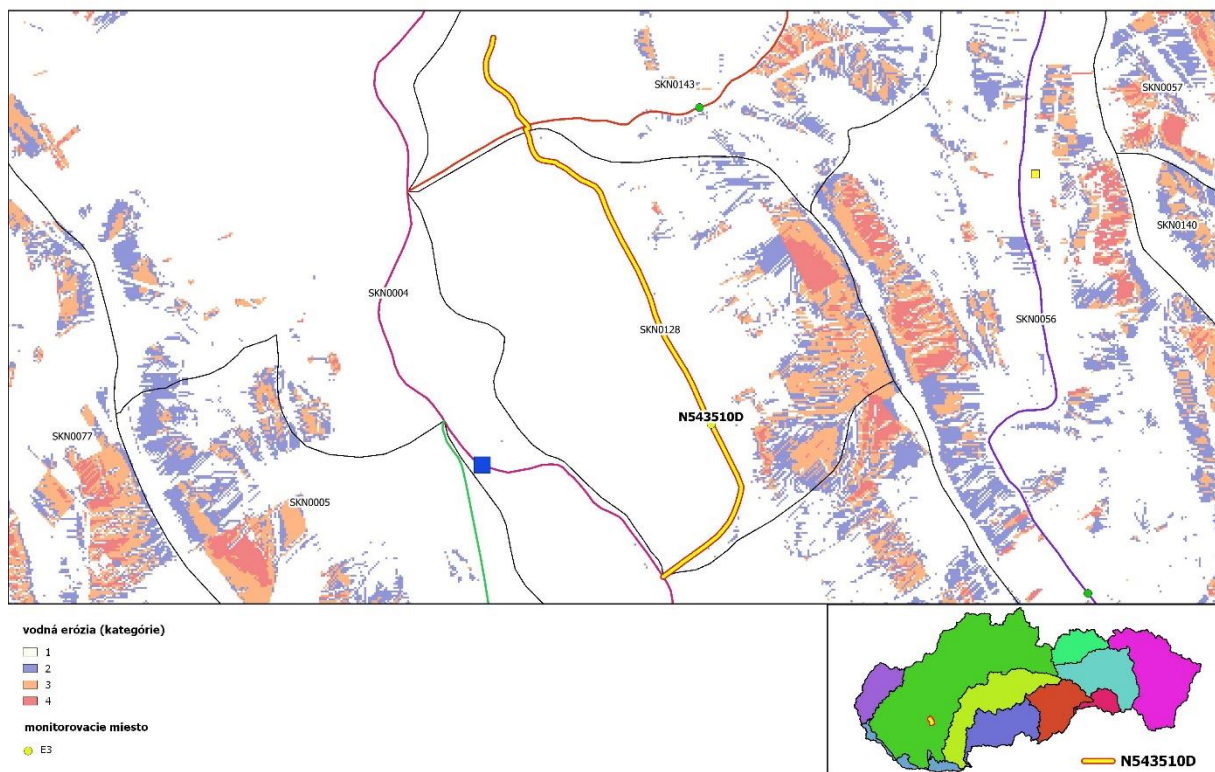
Obr.37 Analyzované povodie monitorovacieho miesta N539000D



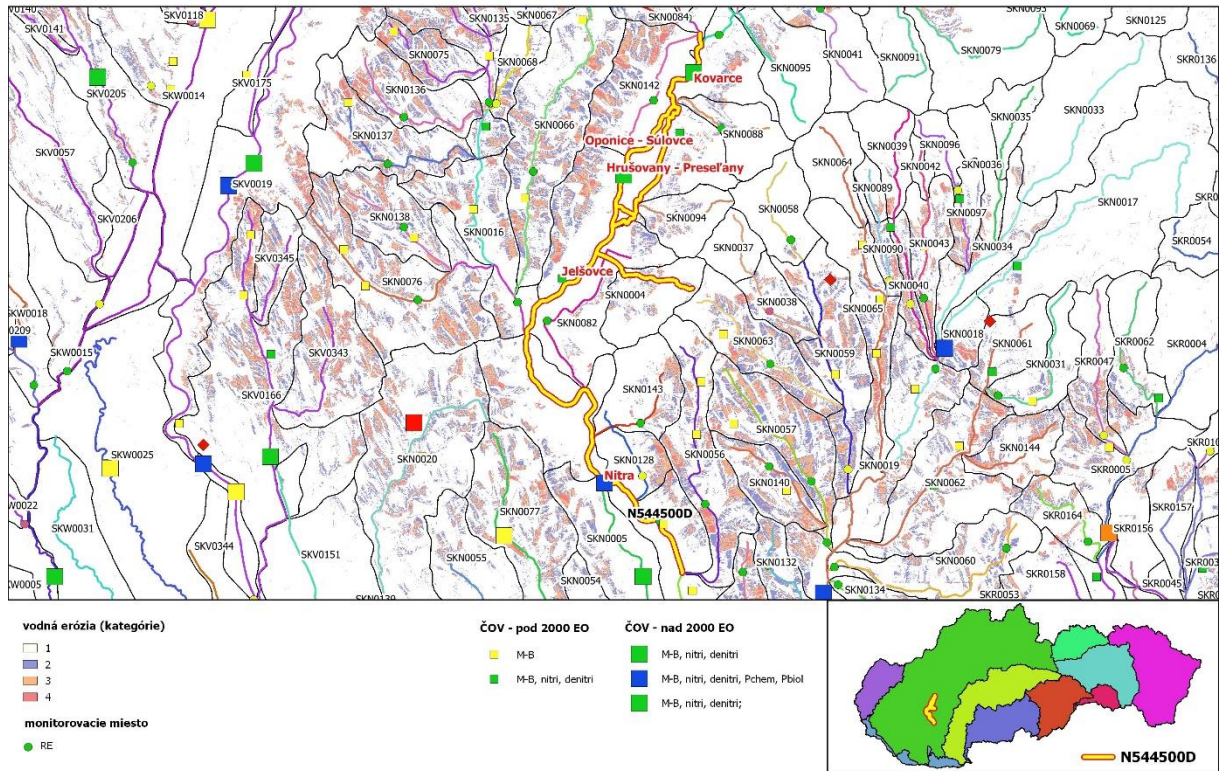
Obr.38 Analyzované povodie monitorovacieho miesta N541010D



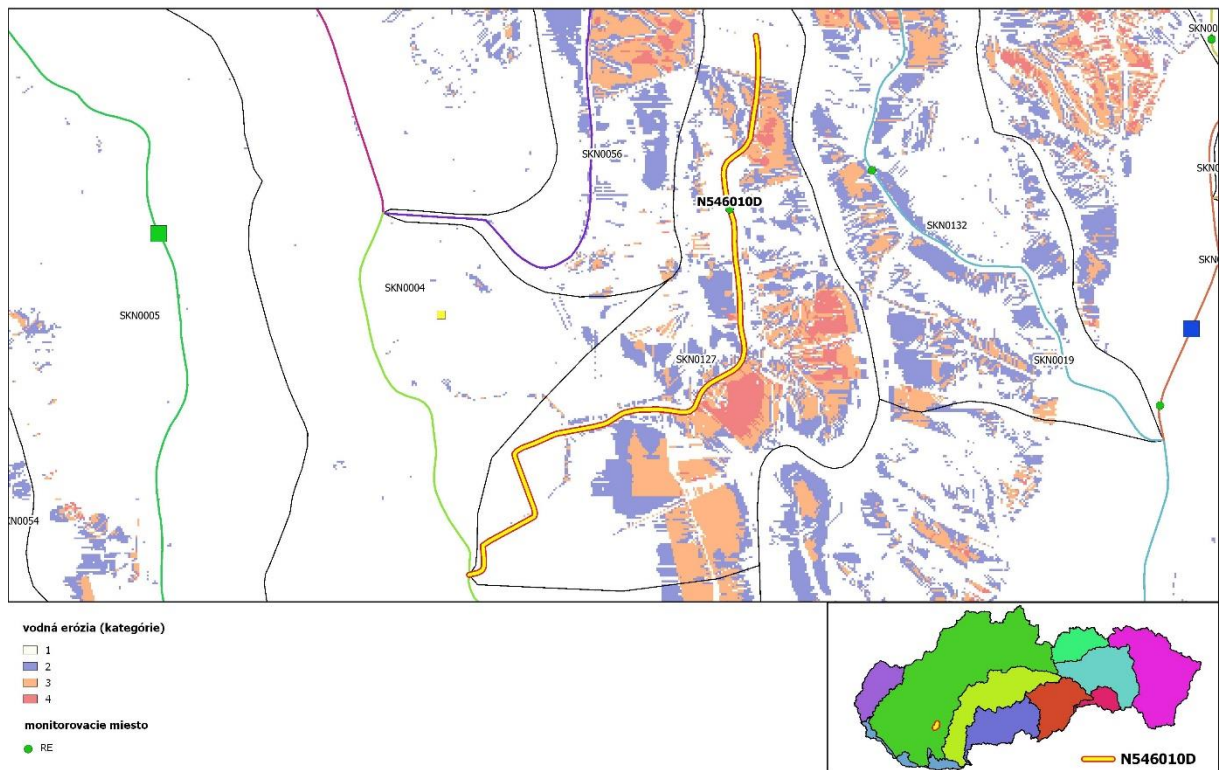
Obr.39 Analyzované povodie monitorovacieho miesta N541520D



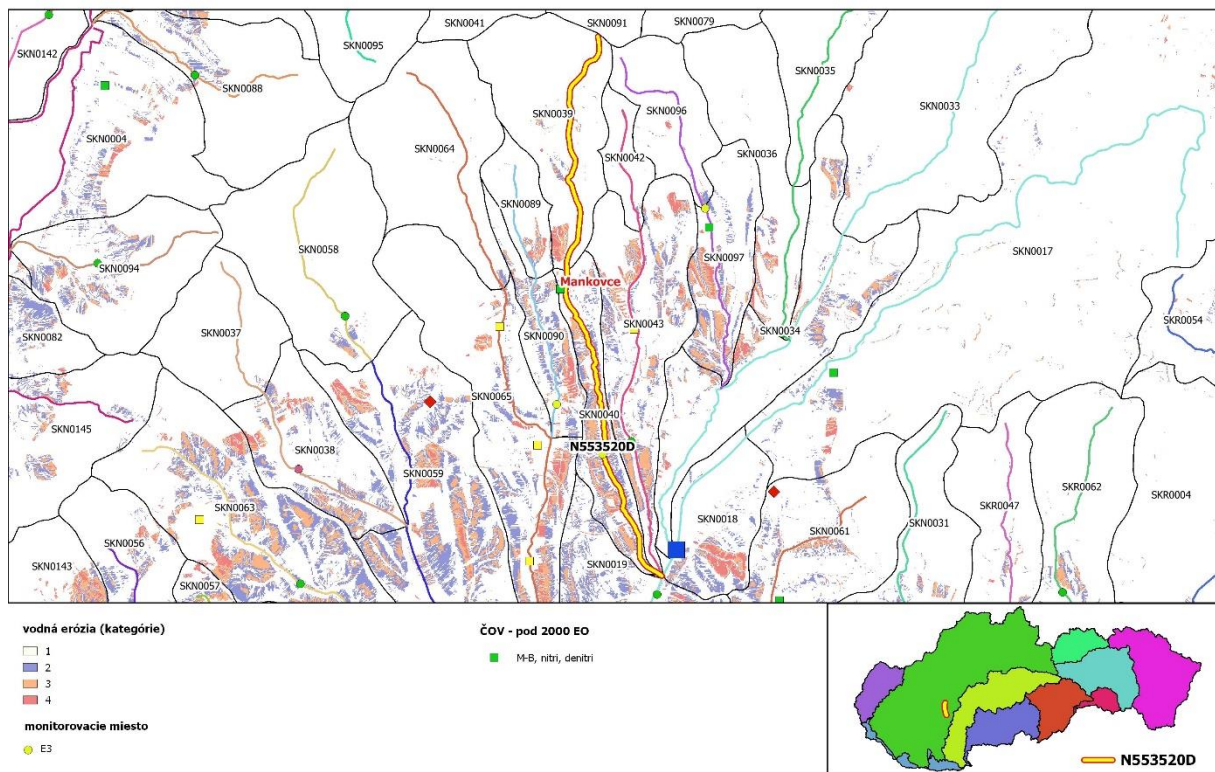
Obr.40 Analyzované povodie monitorovacieho miesta N543510D



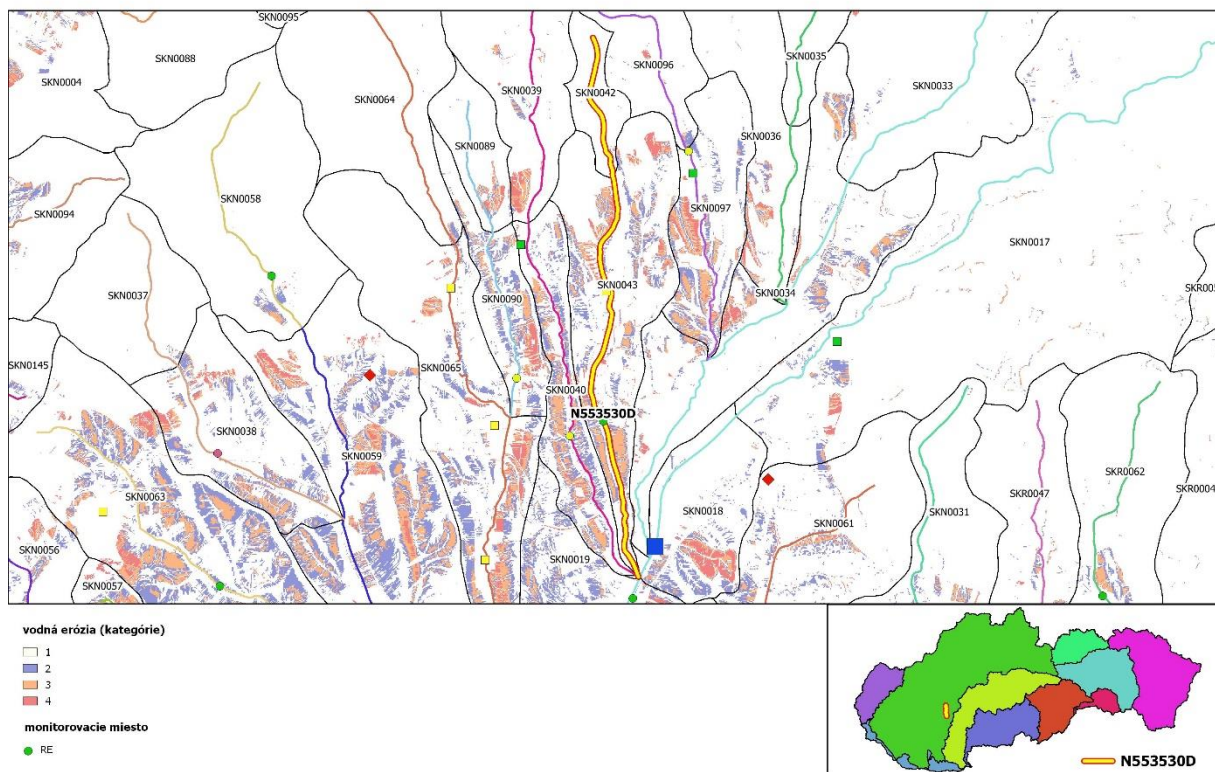
Obr.41 Analyzované povodie monitorovacieho miesta N544500D



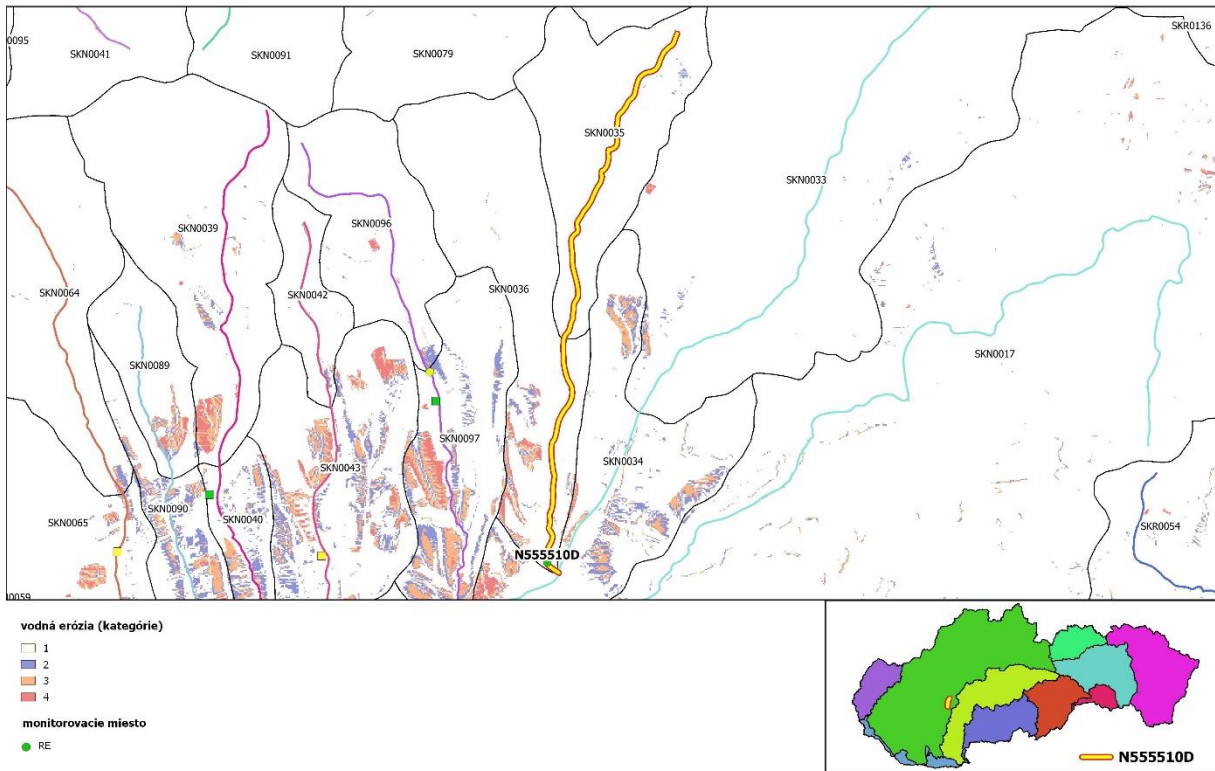
Obr.42 Analyzované povodie monitorovacieho miesta N546010D



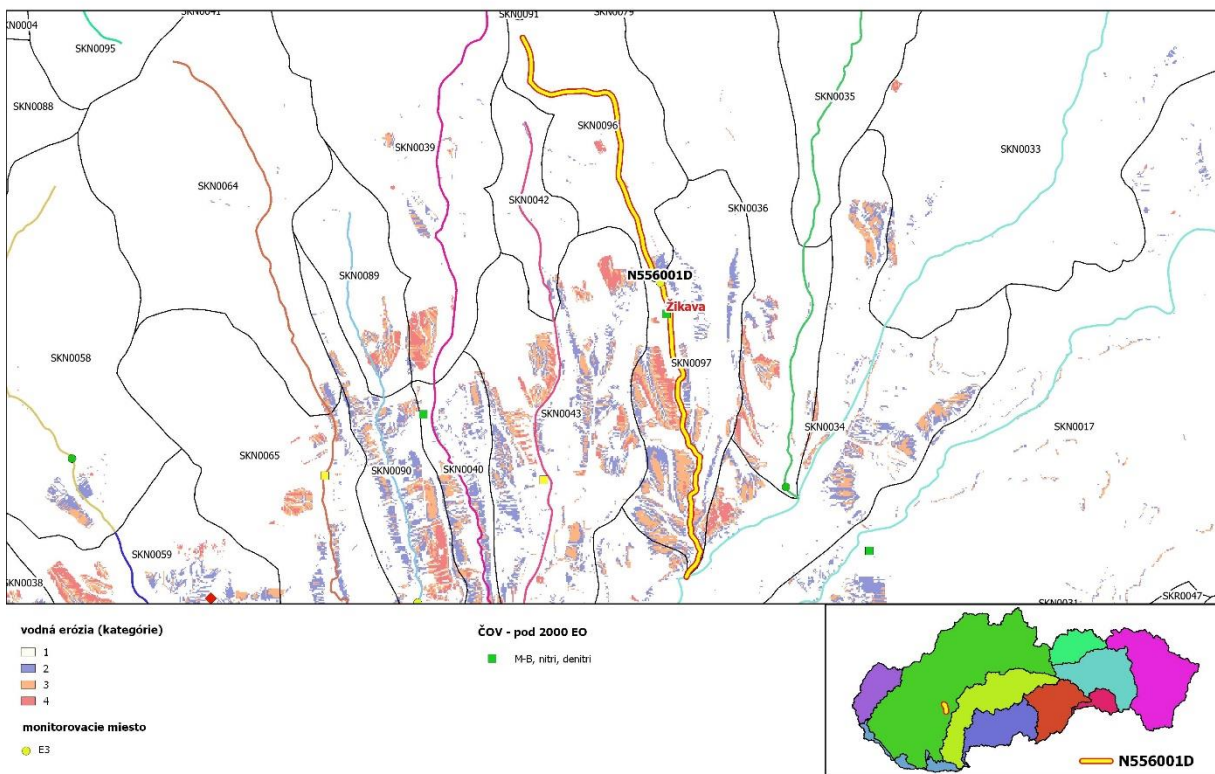
Obr.43 Analyzované povodie monitorovacieho miesta N553520D



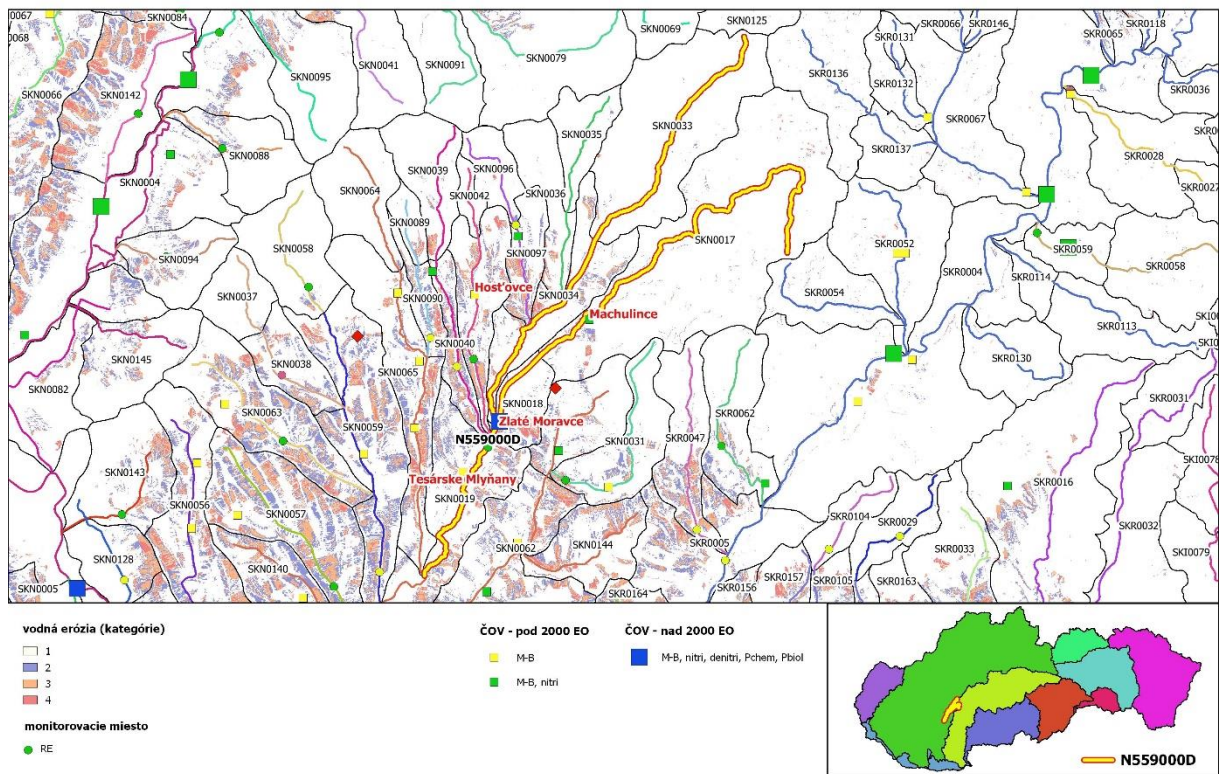
Obr.44 Analyzované povodie monitorovacieho miesta N553530D



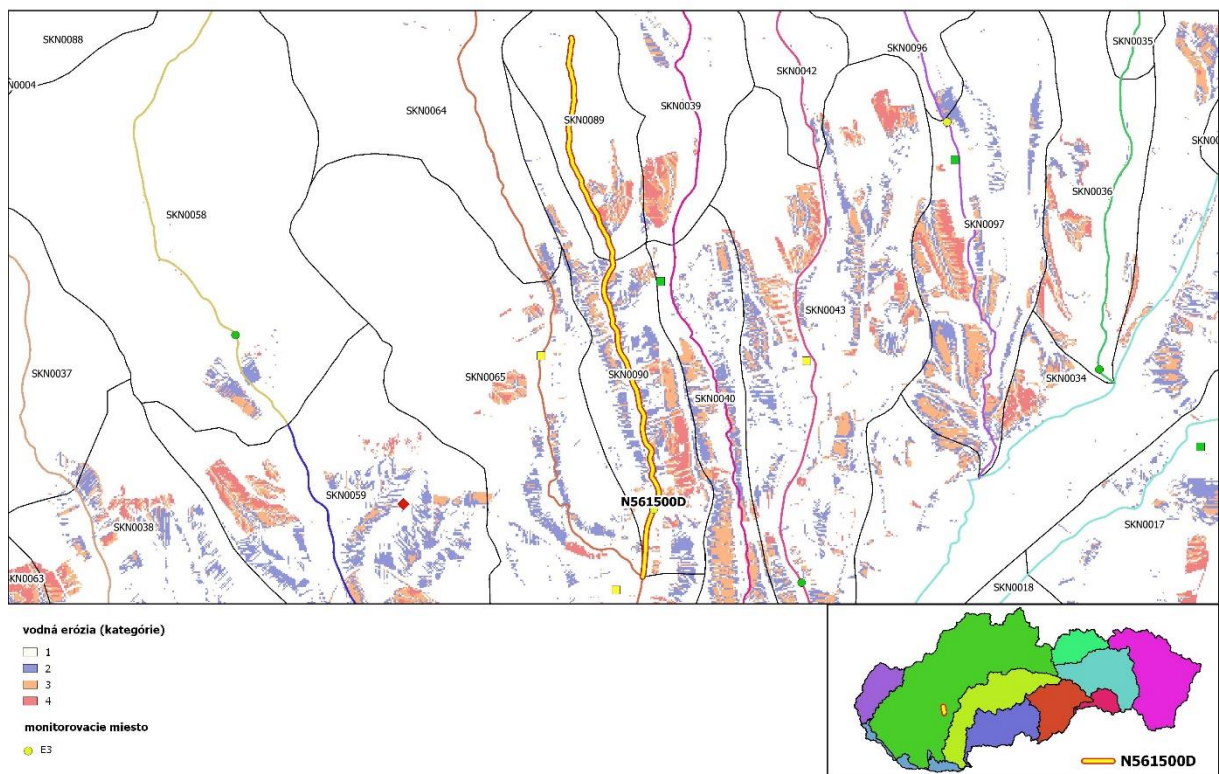
Obr.45 Analyzované povodie monitorovacieho miesta N55510D



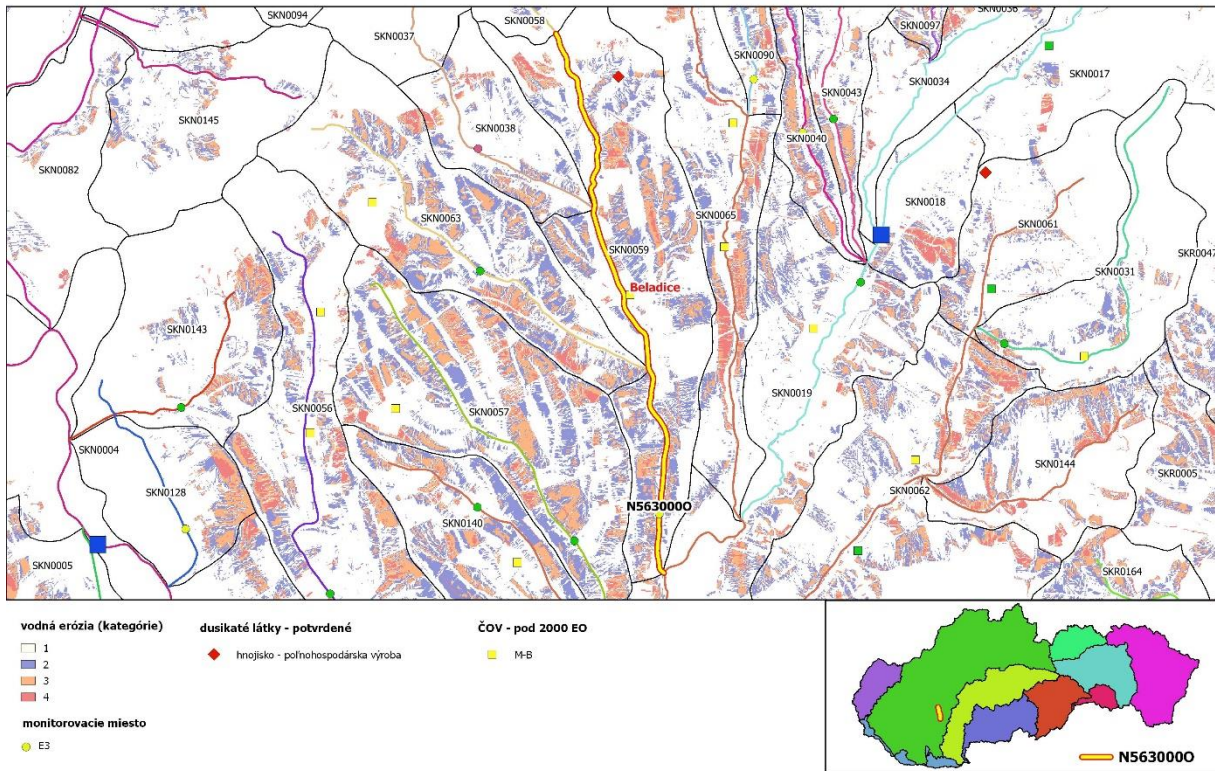
Obr.46 Analyzované povodie monitorovacieho miesta N556001D



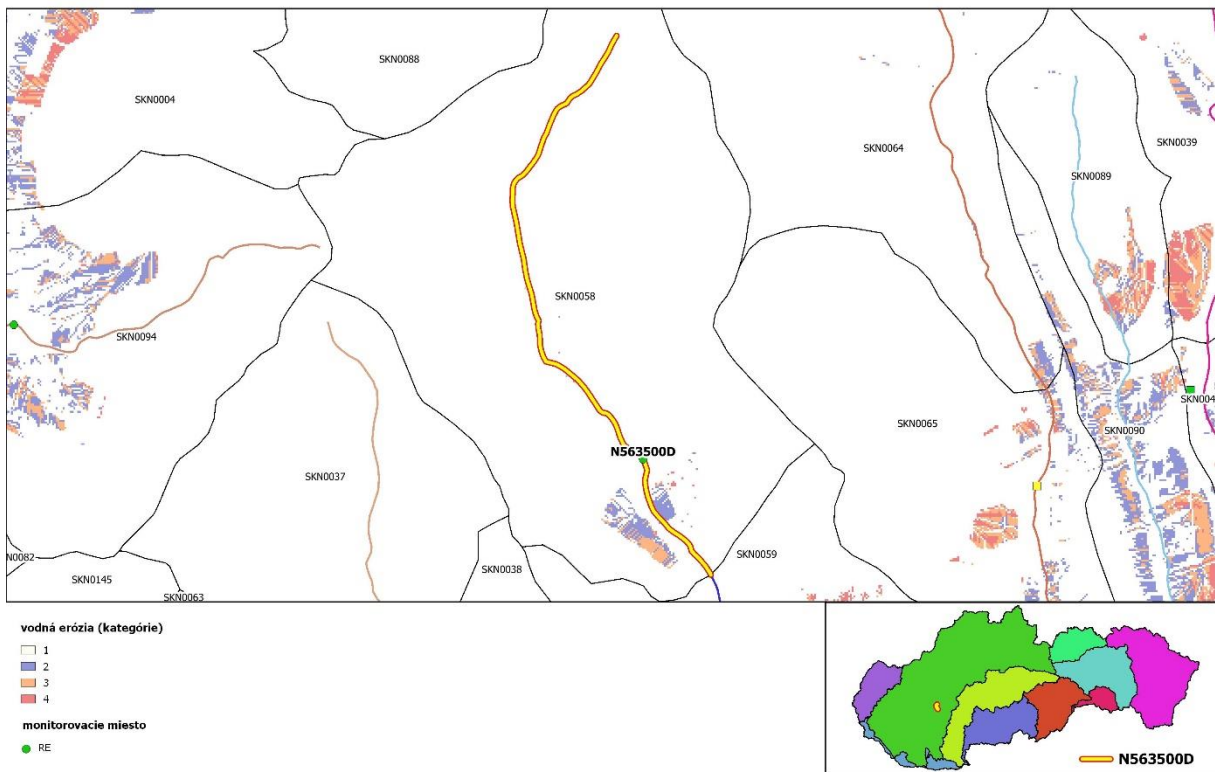
Obr.47 Analyzované povodie monitorovacieho miesta N559000D



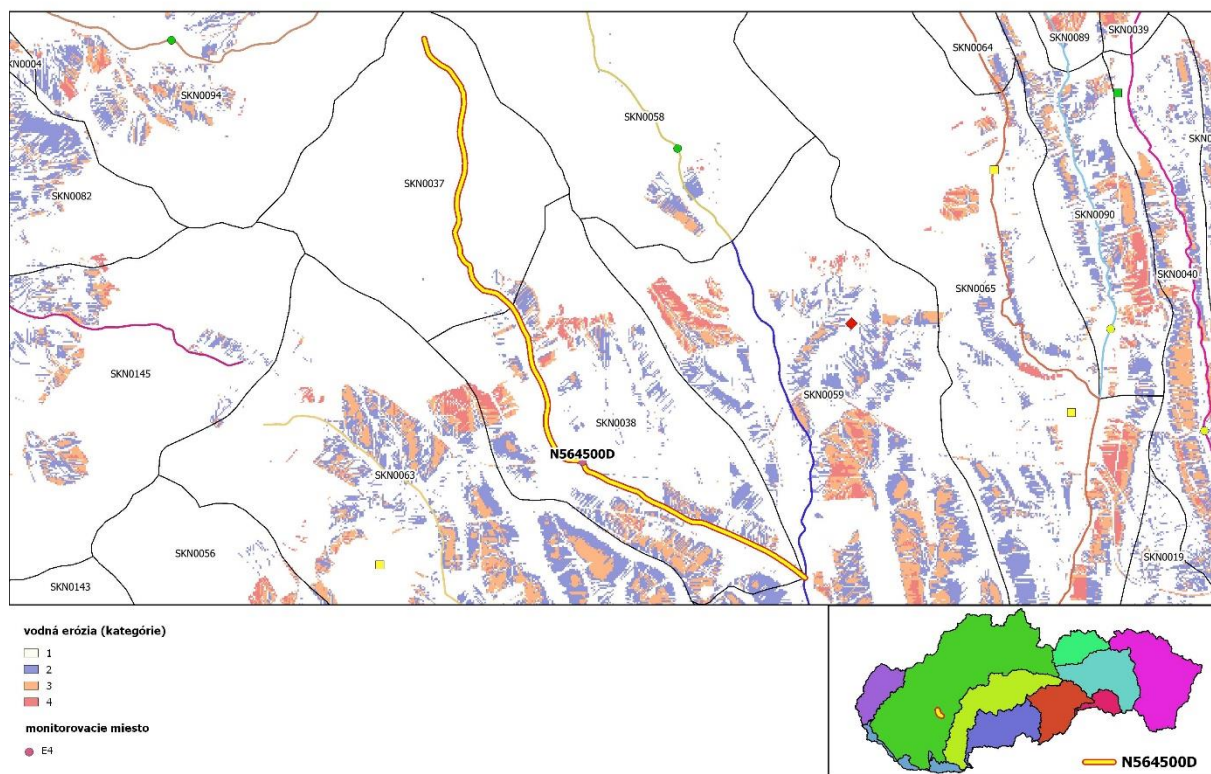
Obr.48 Analyzované povodie monitorovacieho miesta N561500D



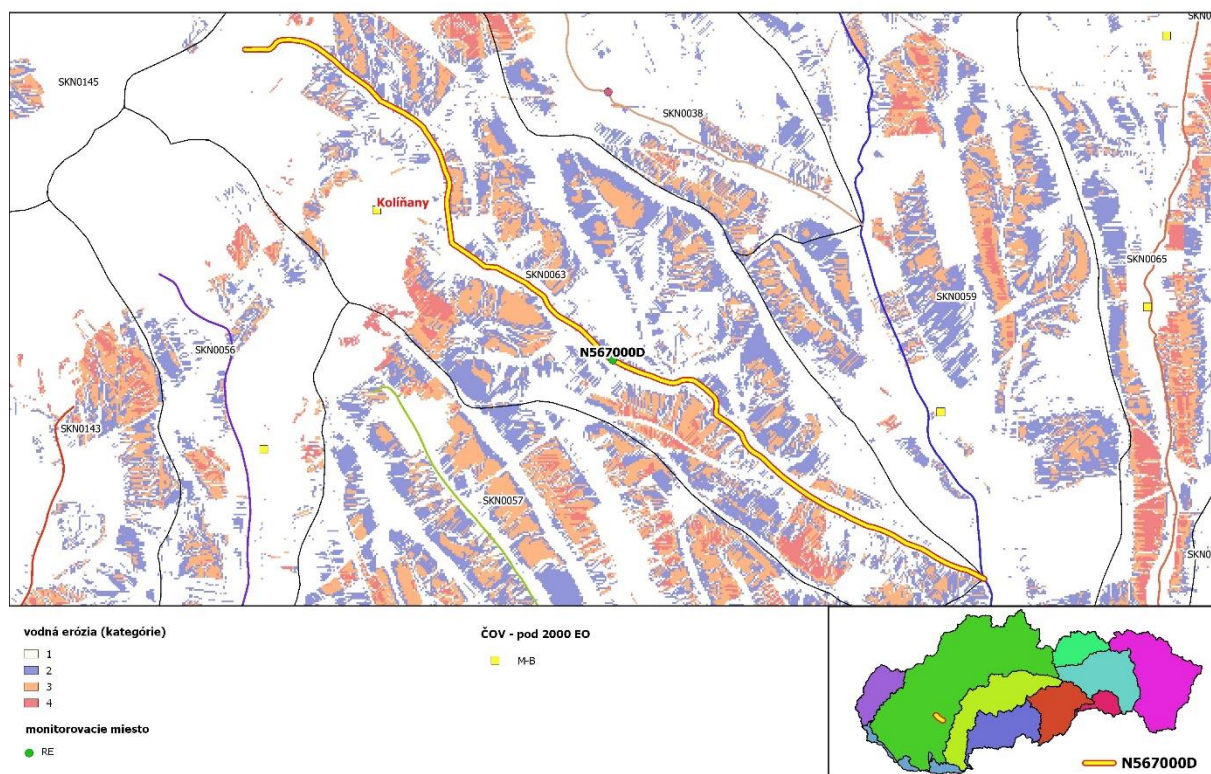
Obr.49 Analyzované povodie monitorovacieho miesta N563000D



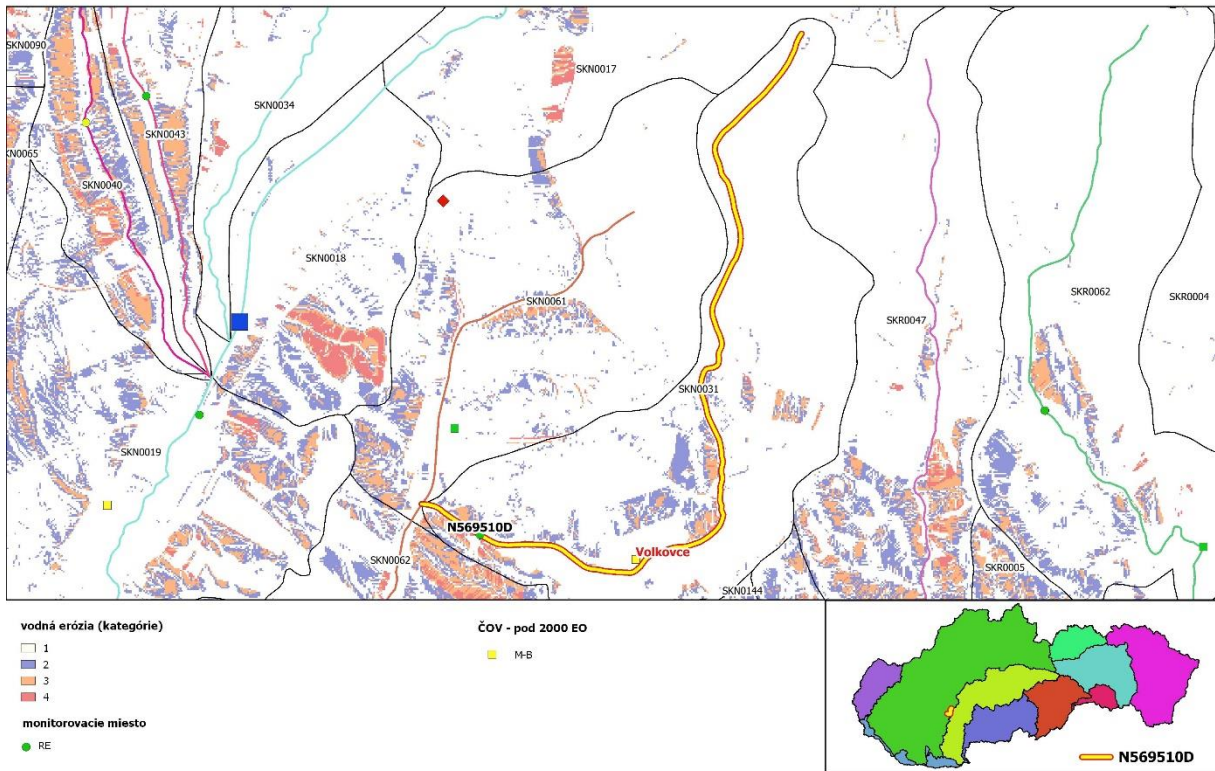
Obr.50 Analyzované povodie monitorovacieho miesta N563500D



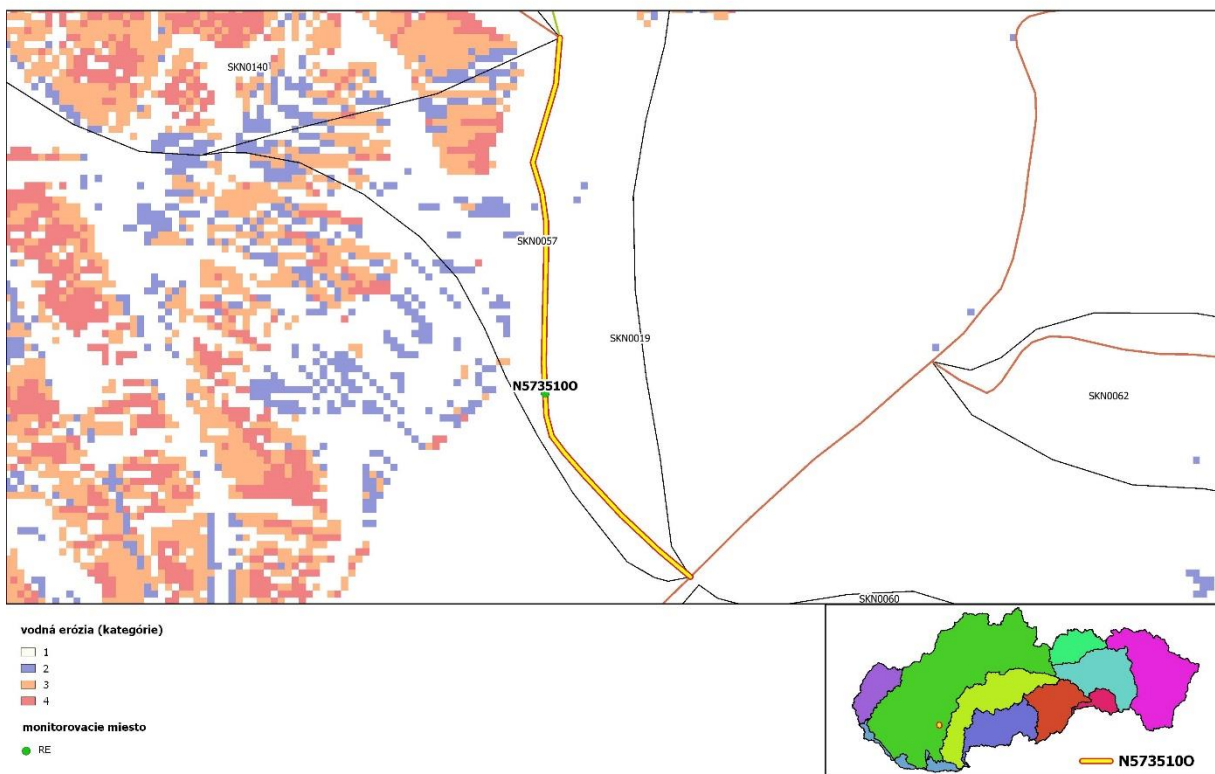
Obr.51 Analyzované povodie monitorovacieho miesta N564500D



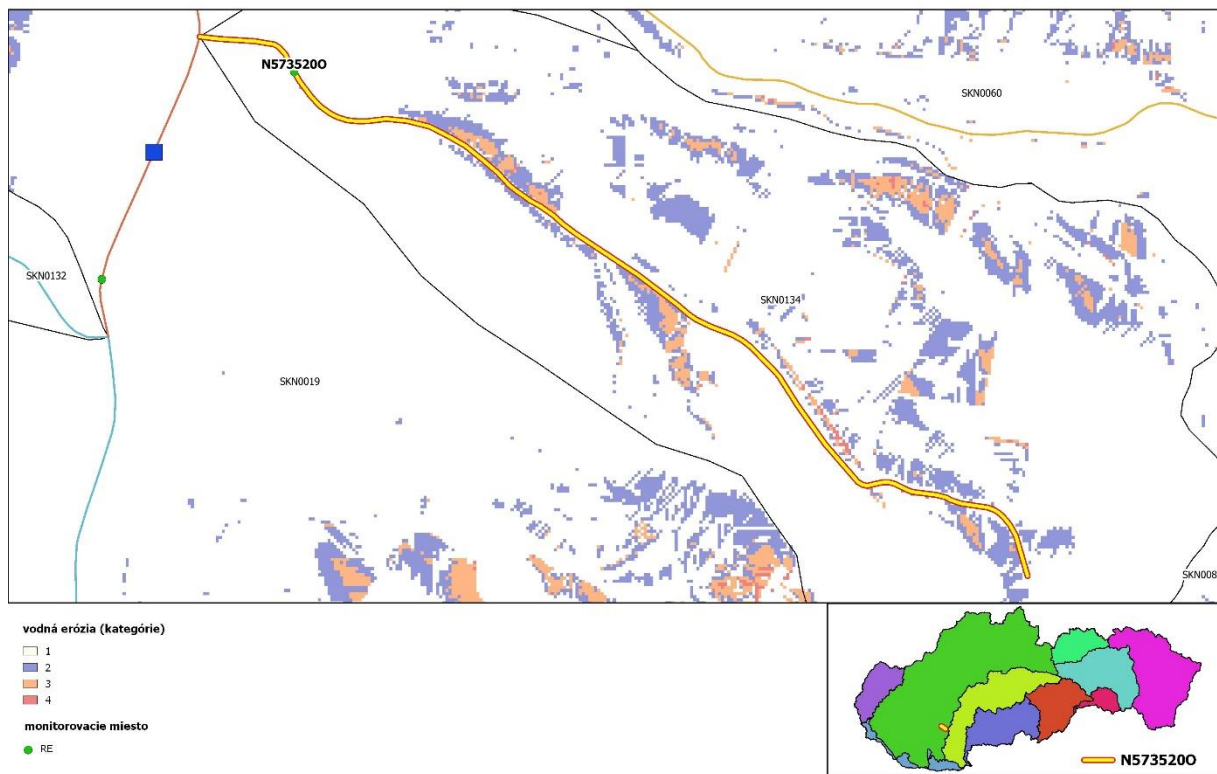
Obr.52 Analyzované povodie monitorovacieho miesta N567000D



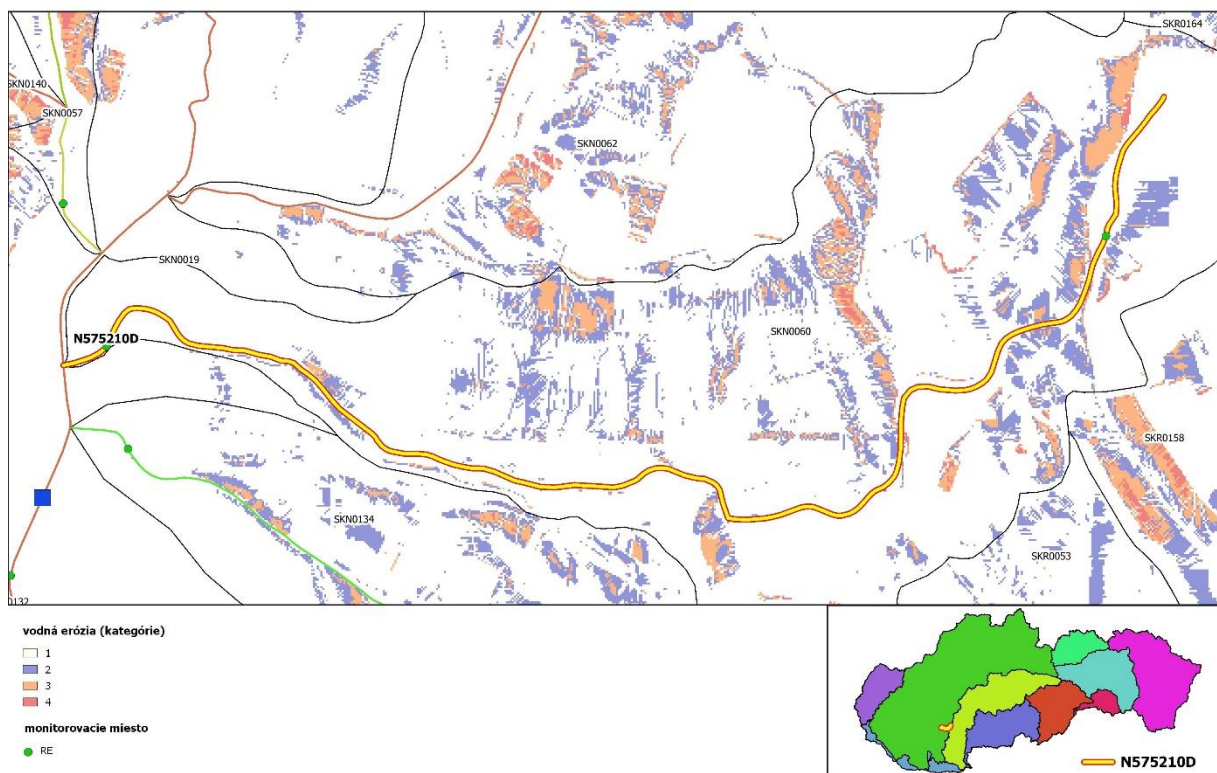
Obr.53 Analyzované povodie monitorovacieho miesta N569510D



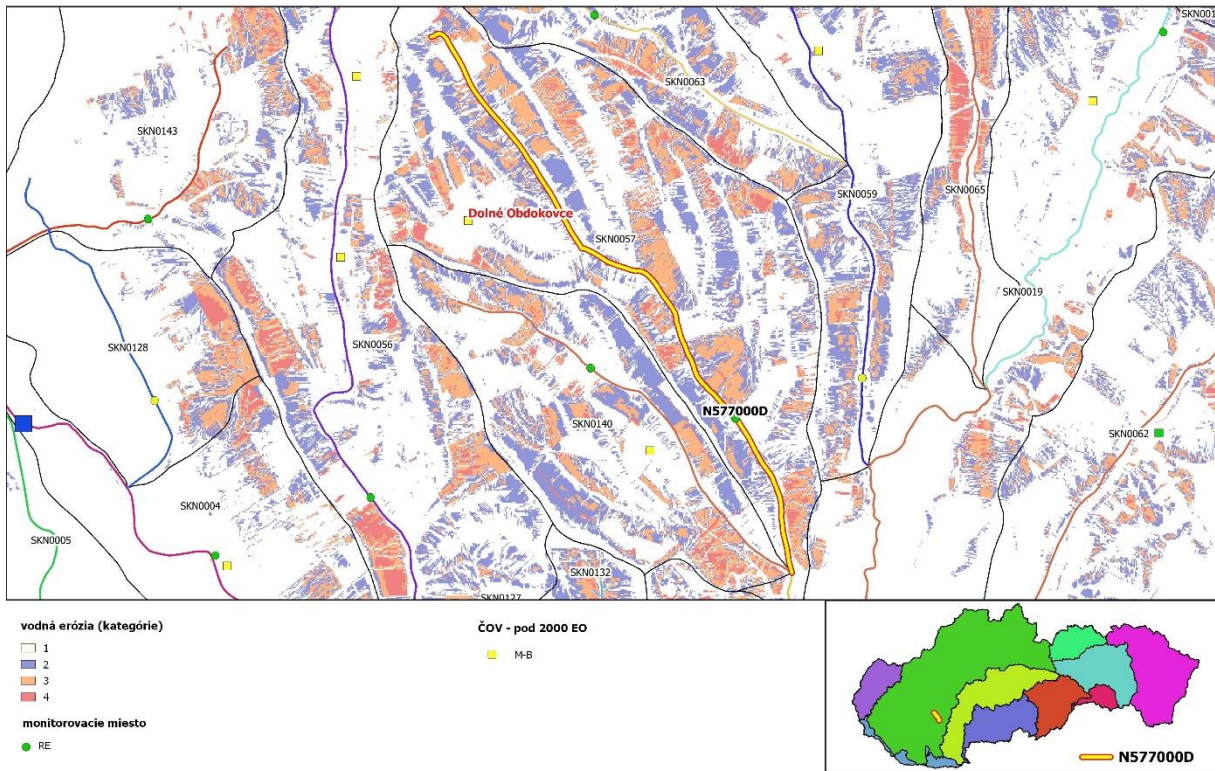
Obr.54 Analyzované povodie monitorovacieho miesta N573510D



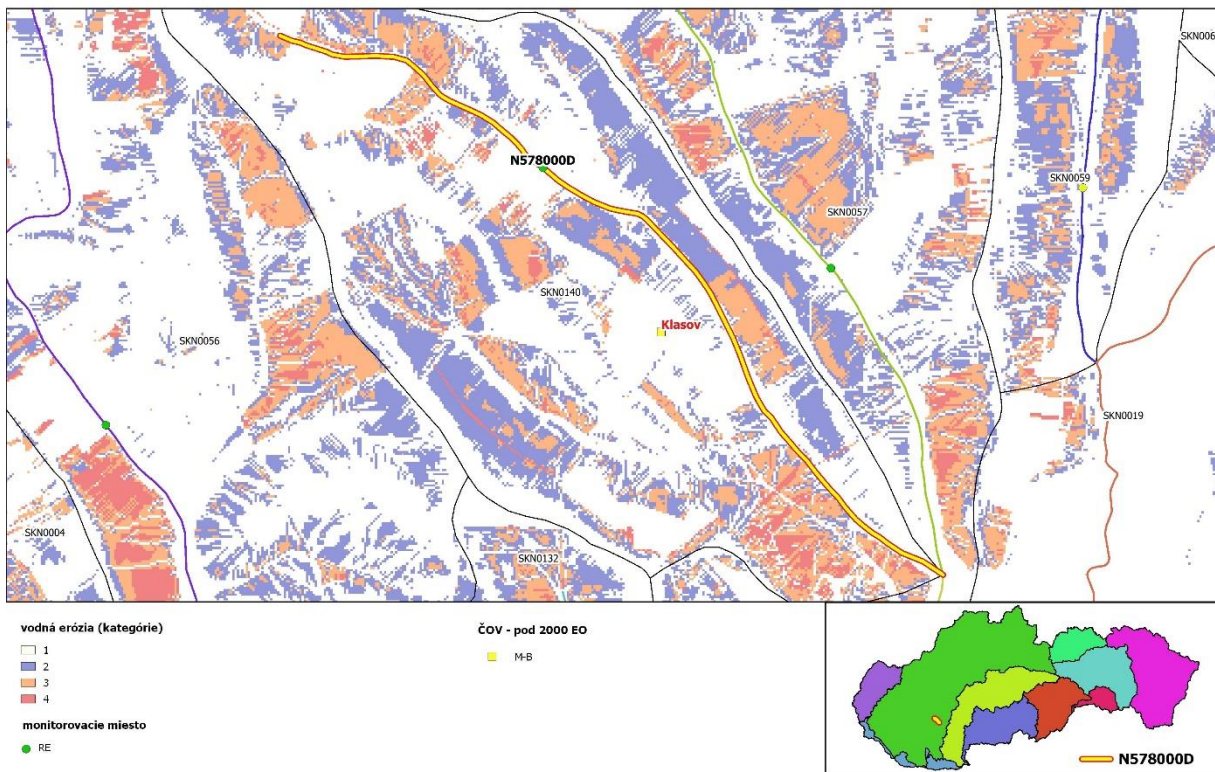
Obr.55 Analyzované povodie monitorovacieho miesta N573520D



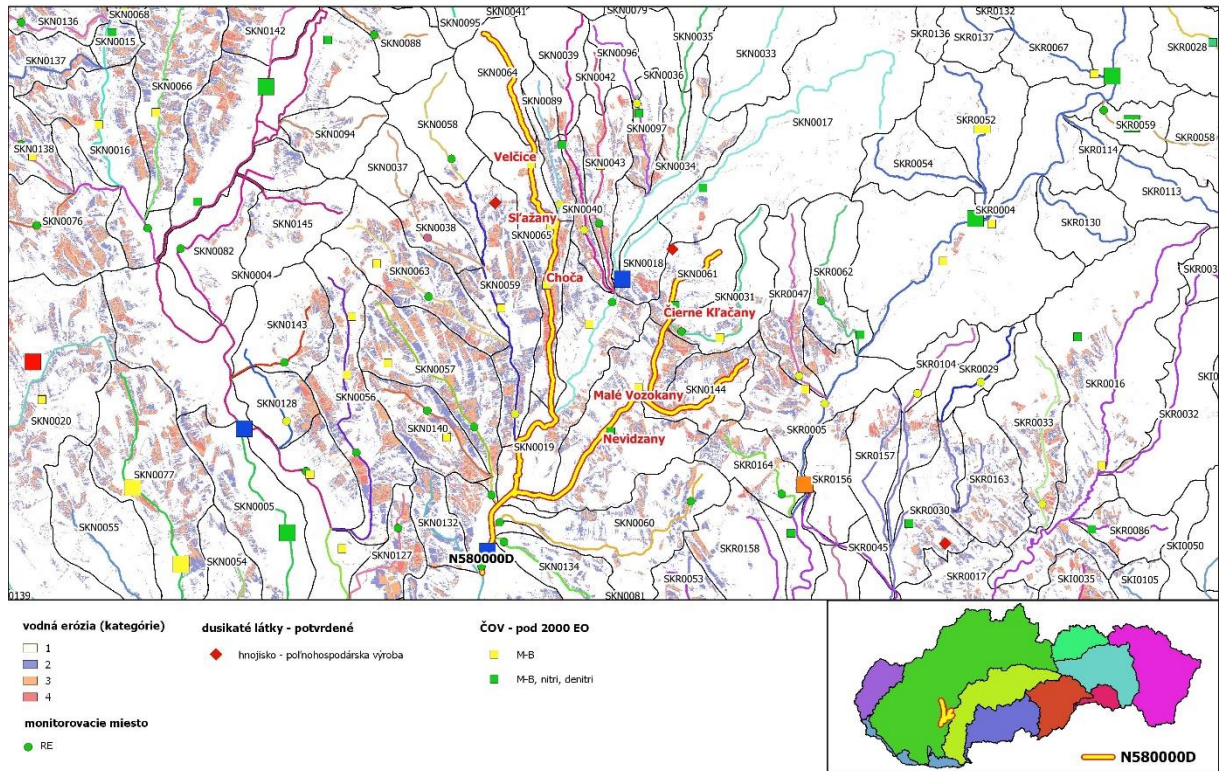
Obr.56 Analyzované povodie monitorovacieho miesta N575210D



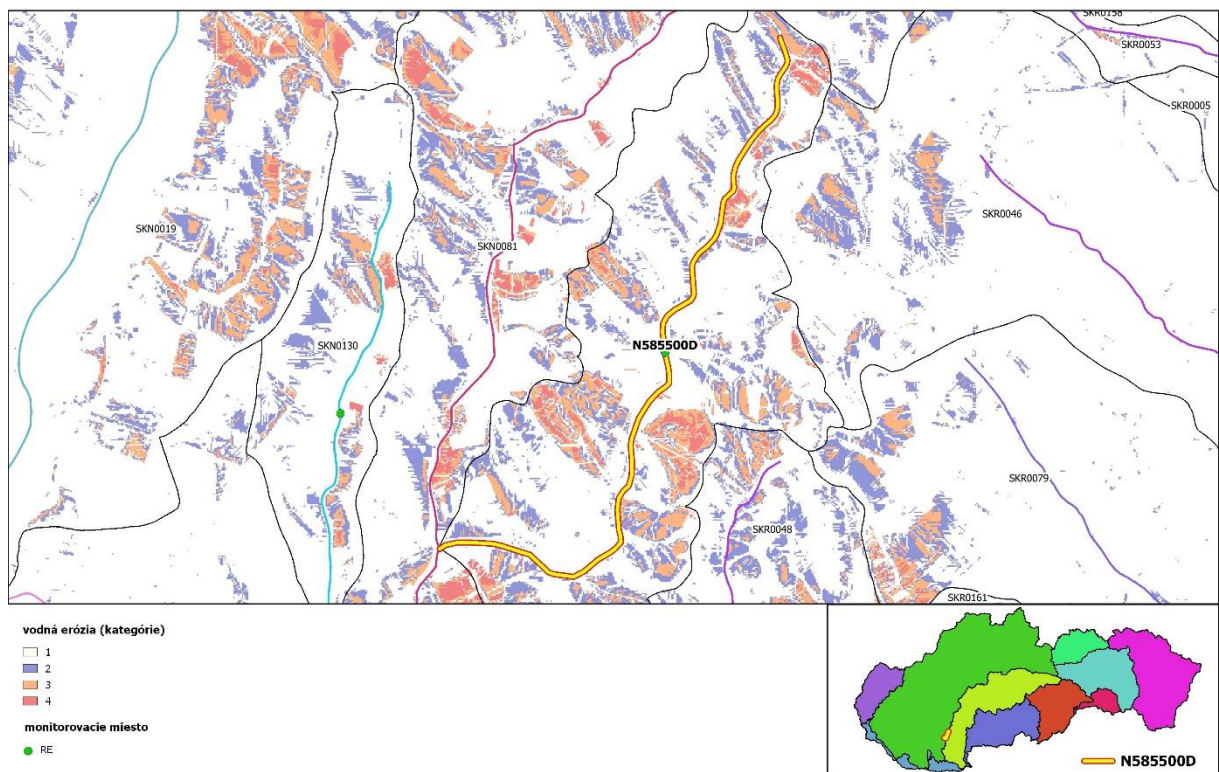
Obr.57 Analyzované povodie monitorovacieho miesta N577000D



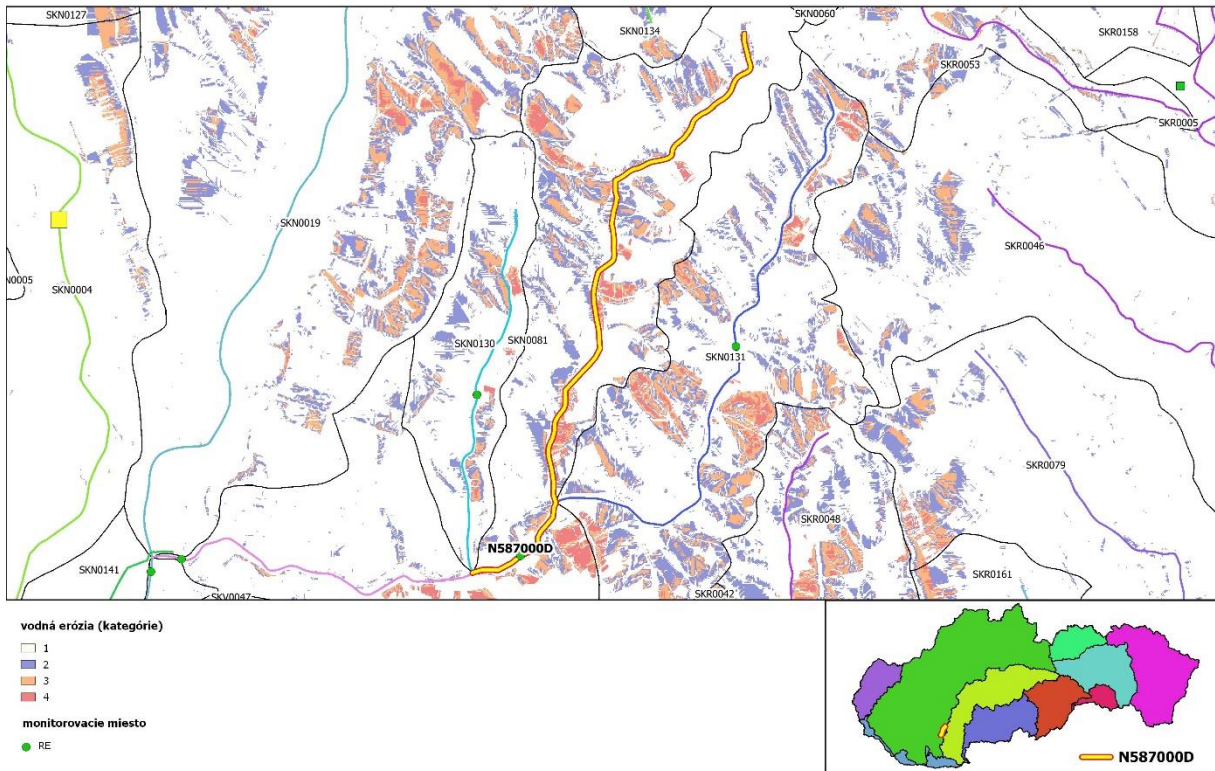
Obr.58 Analyzované povodie monitorovacieho miesta N578000D



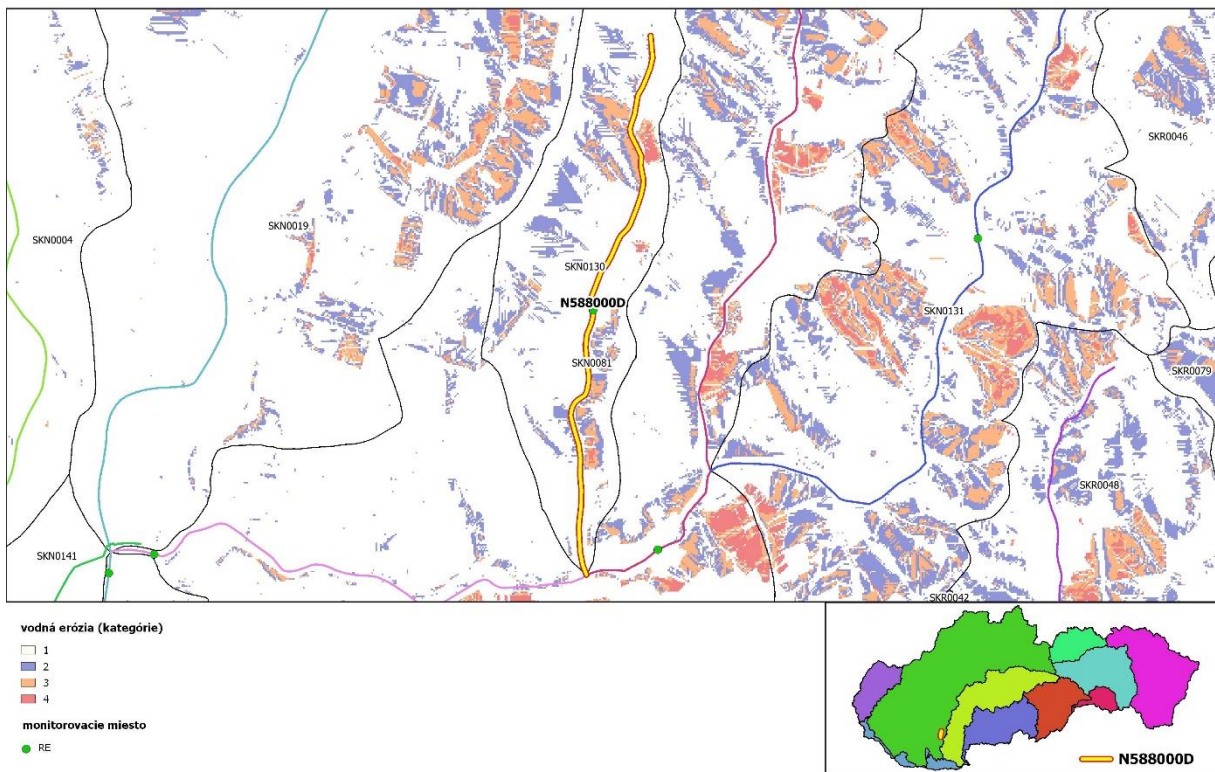
Obr.59 Analyzované povodie monitorovacieho miesta N580000D



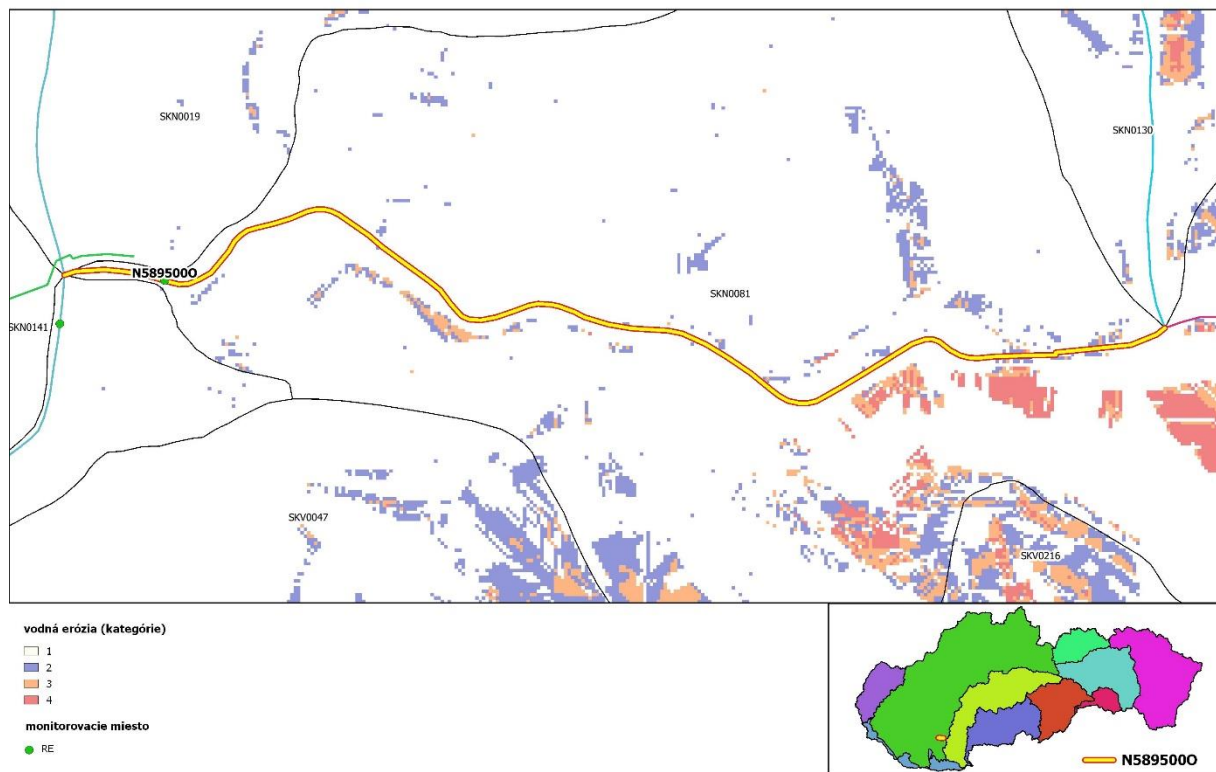
Obr.60 Analyzované povodie monitorovacieho miesta N585500D



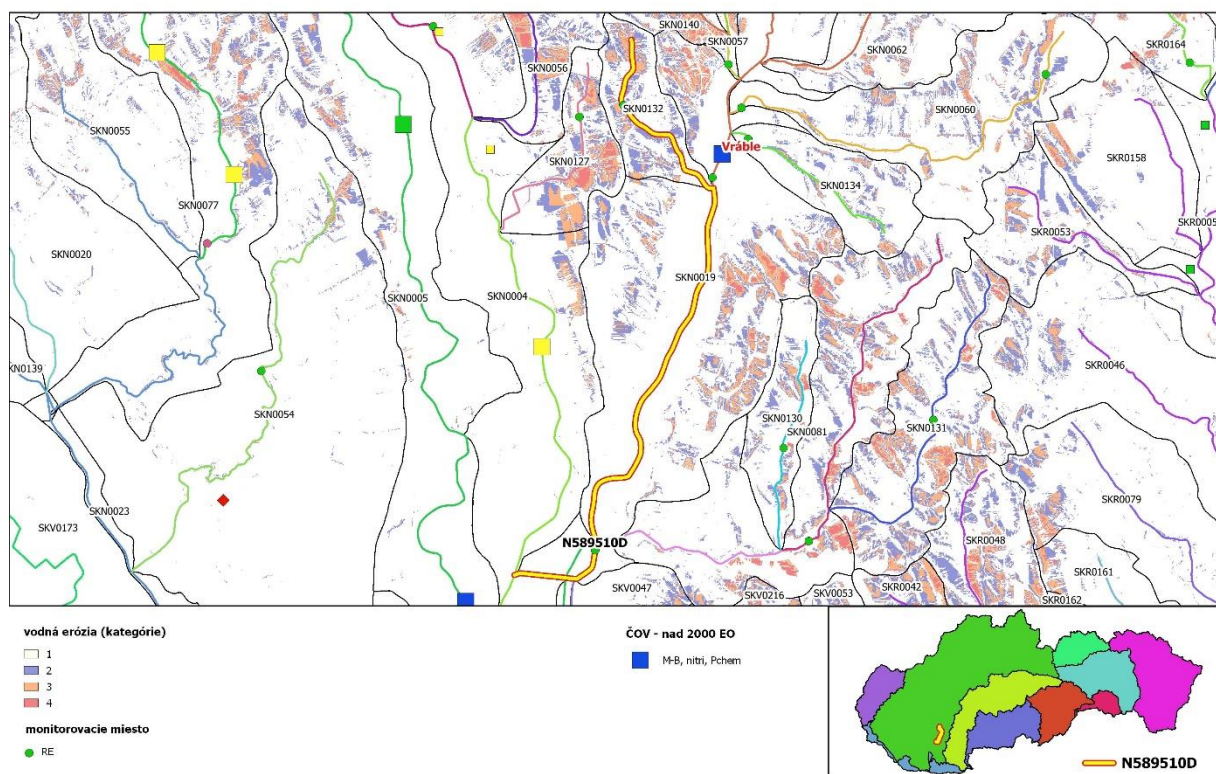
Obr.61 Analyzované povodie monitorovacieho miesta N587000D



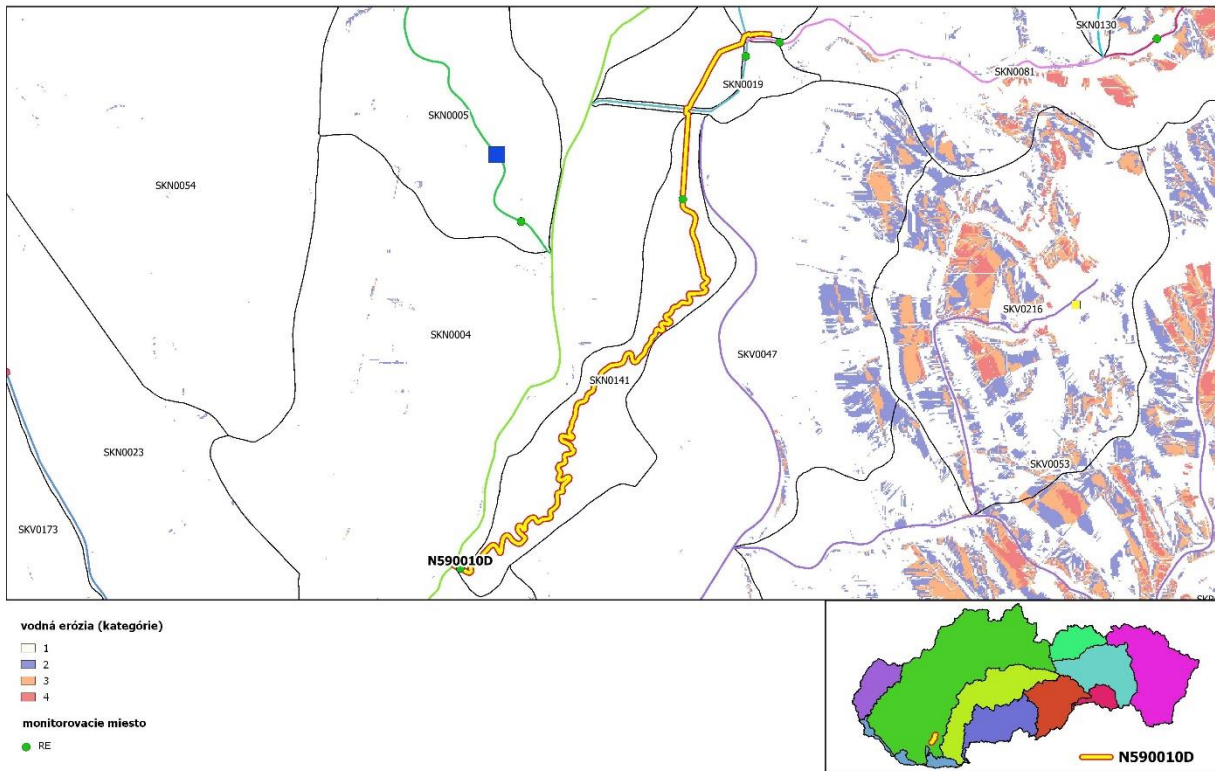
Obr.62 Analyzované povodie monitorovacieho miesta N588000D



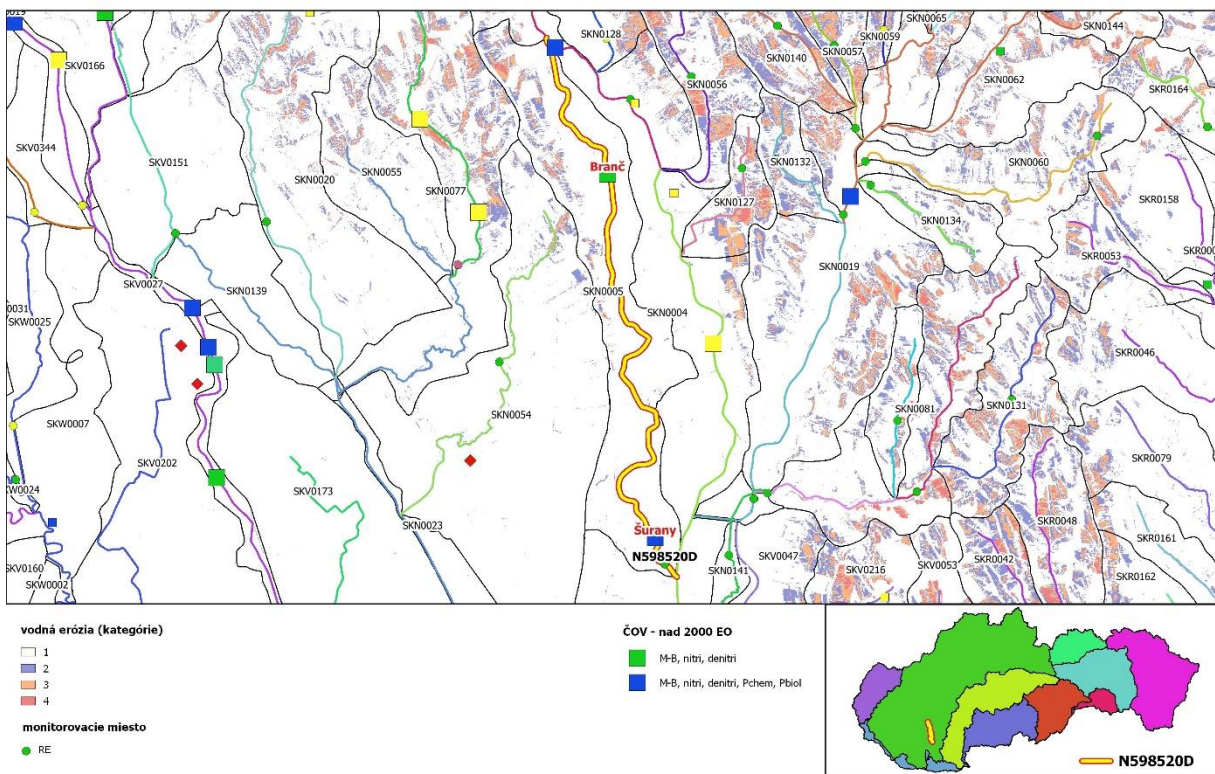
Obr.63 Analyzované povodie monitorovacieho miesta N589500D



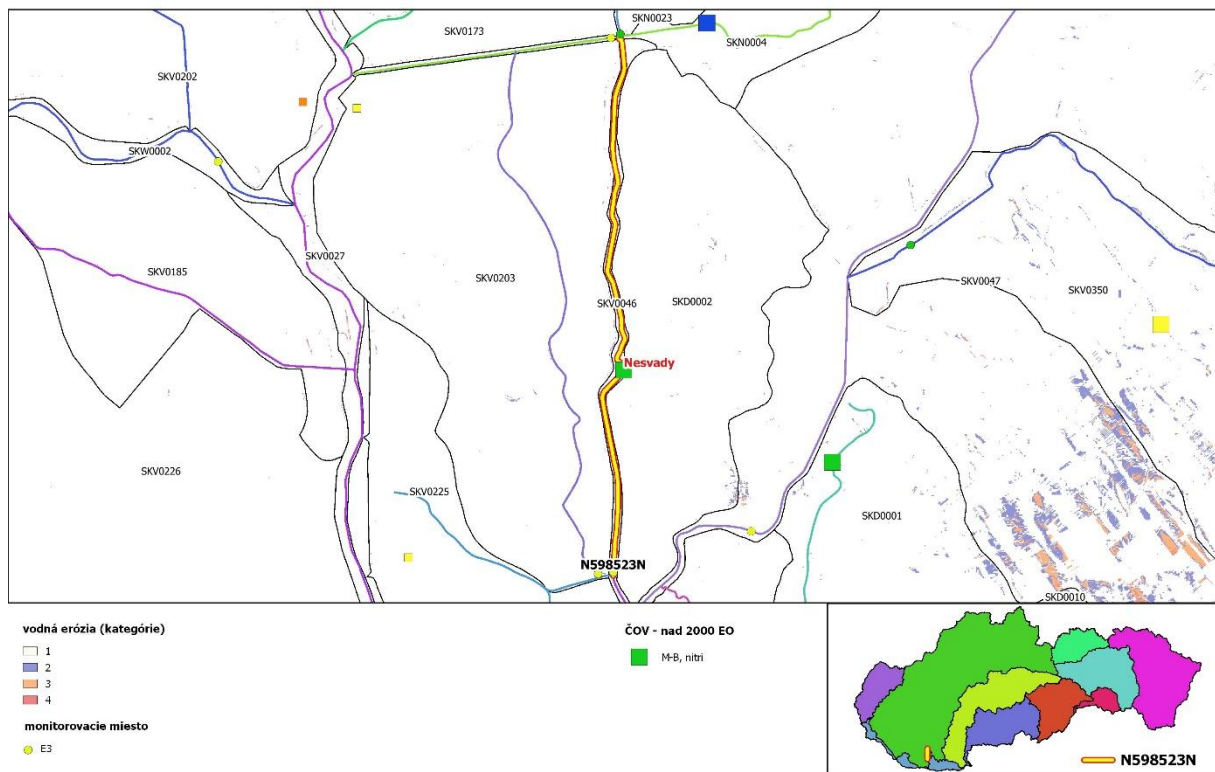
Obr.64 Analyzované povodie monitorovacieho miesta N589510D



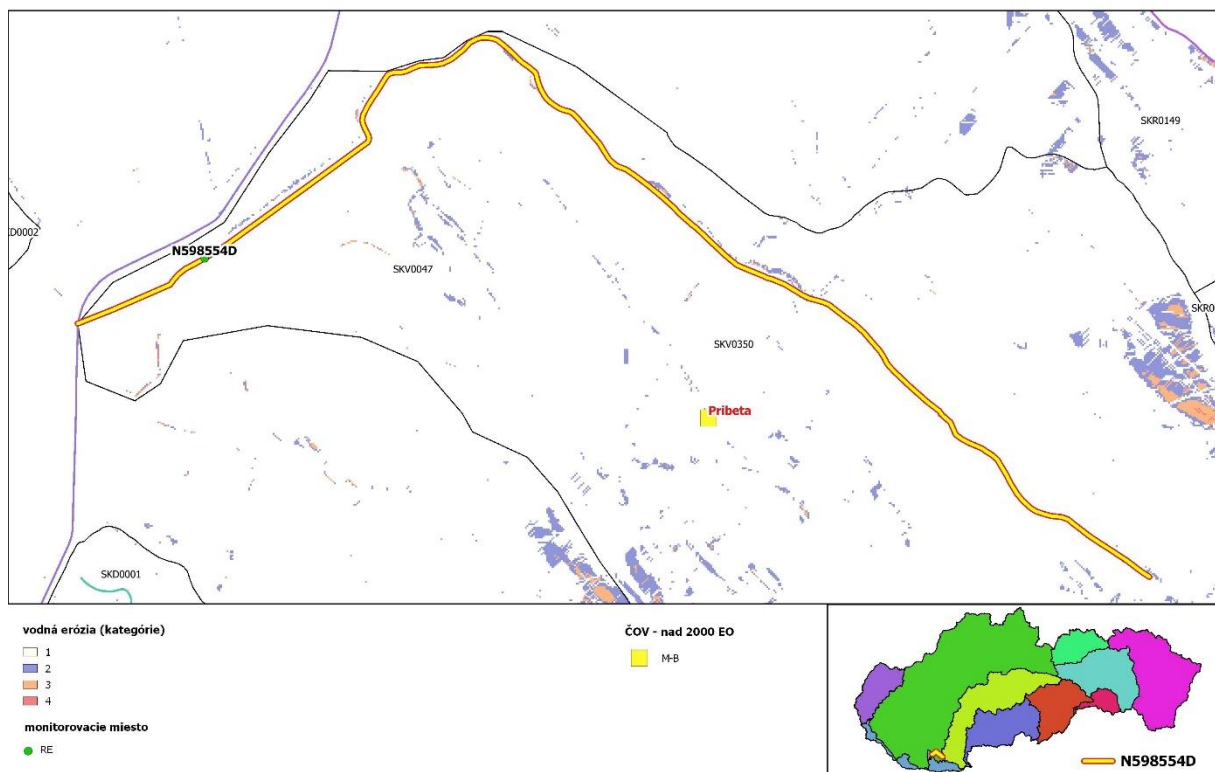
Obr.65 Analyzované povodie monitorovacieho miesta N590010D



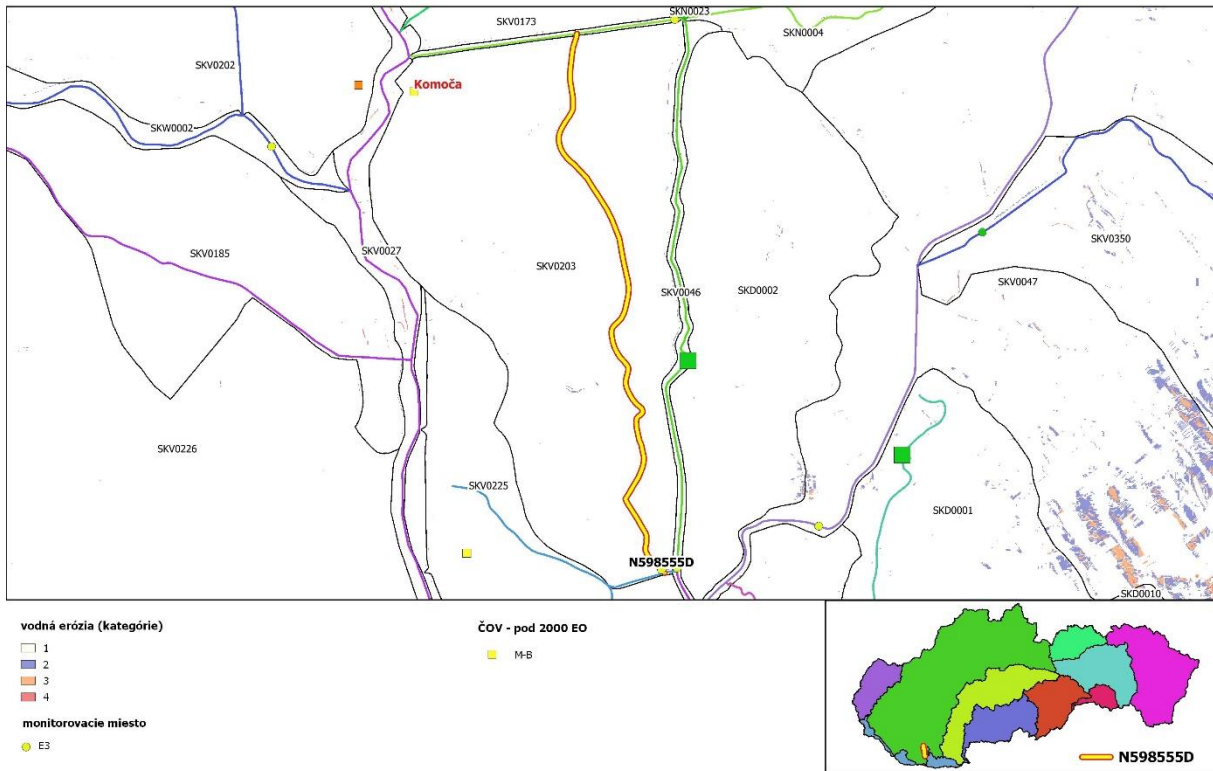
Obr.66 Analyzované povodie monitorovacieho miesta N598520D



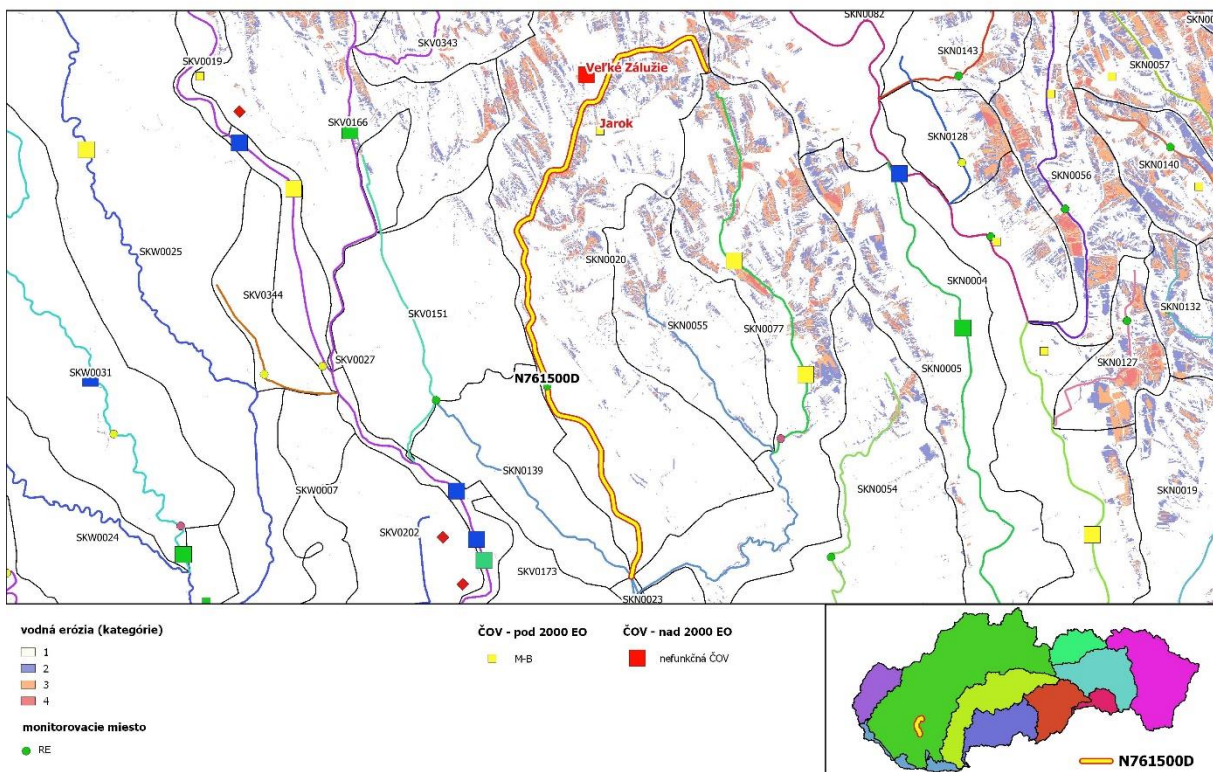
Obr.67 Analyzované povodie monitorovacieho miesta N598523D



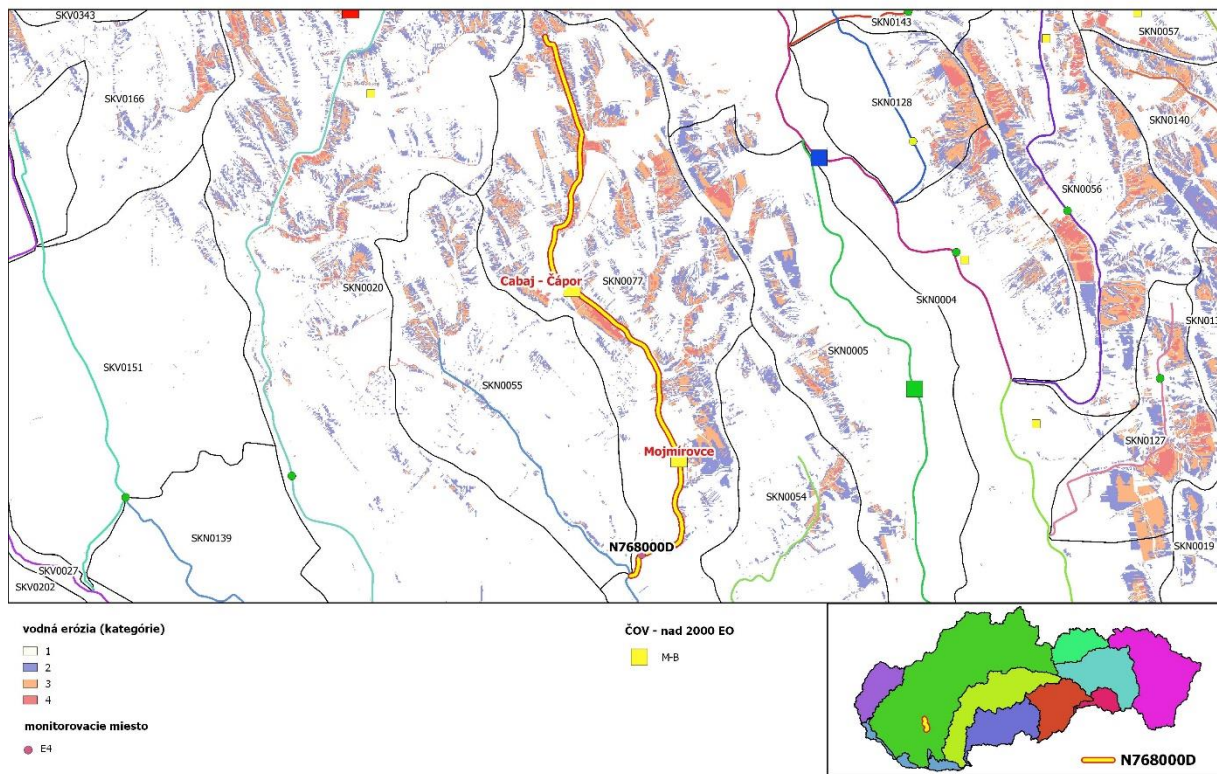
Obr.68 Analyzované povodie monitorovacieho miesta N598554D



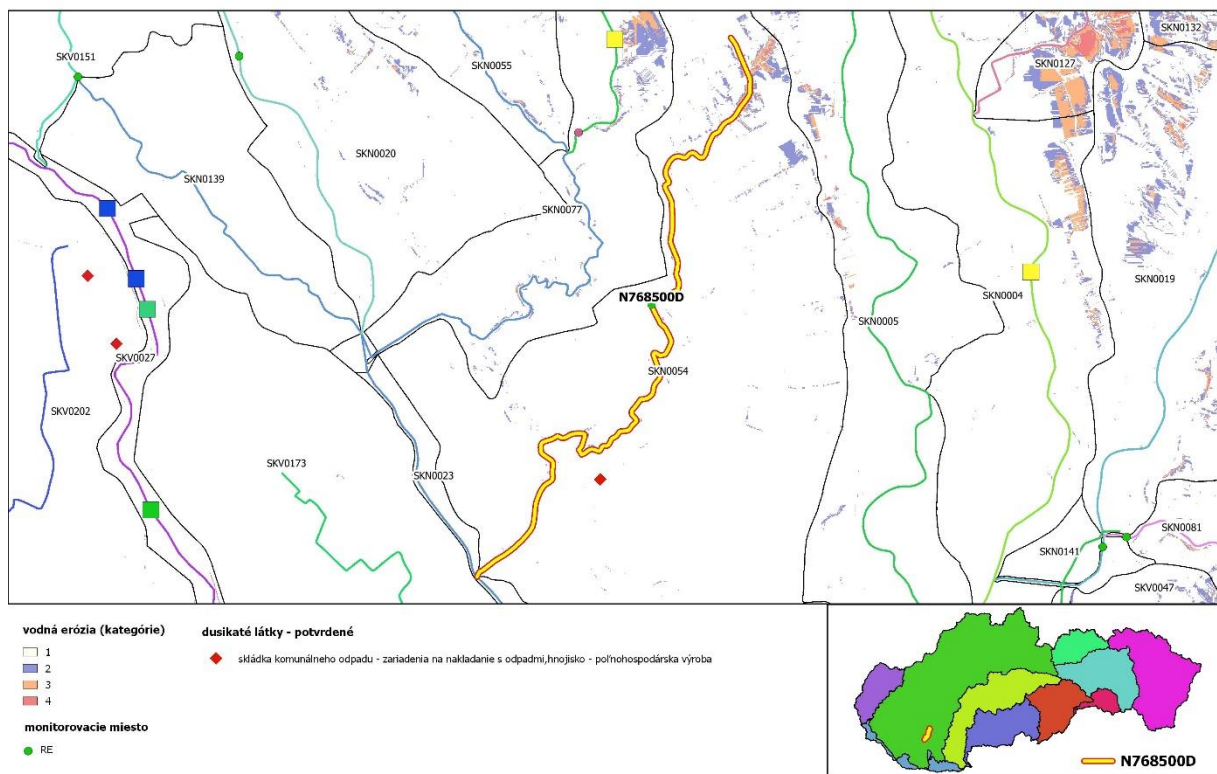
Obr.69 Analyzované povodie monitorovacieho miesta N598555D



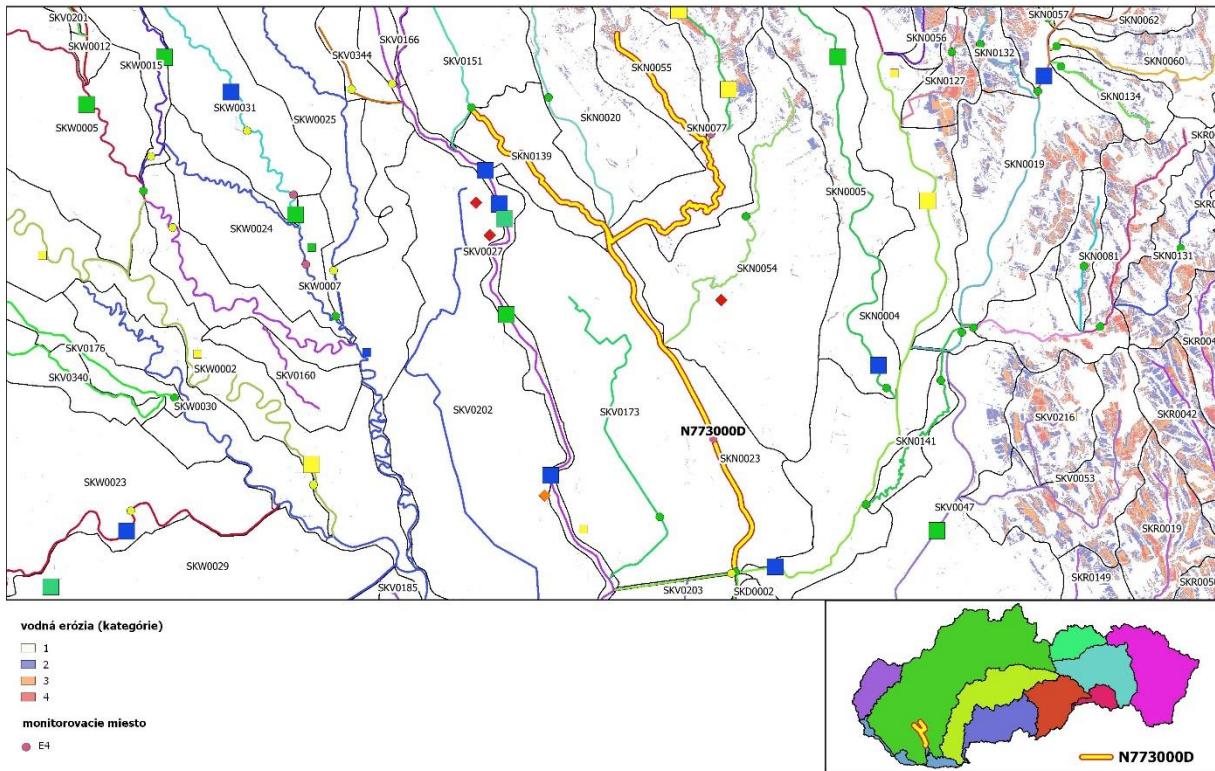
Obr.70 Analyzované povodie monitorovacieho miesta N761500D



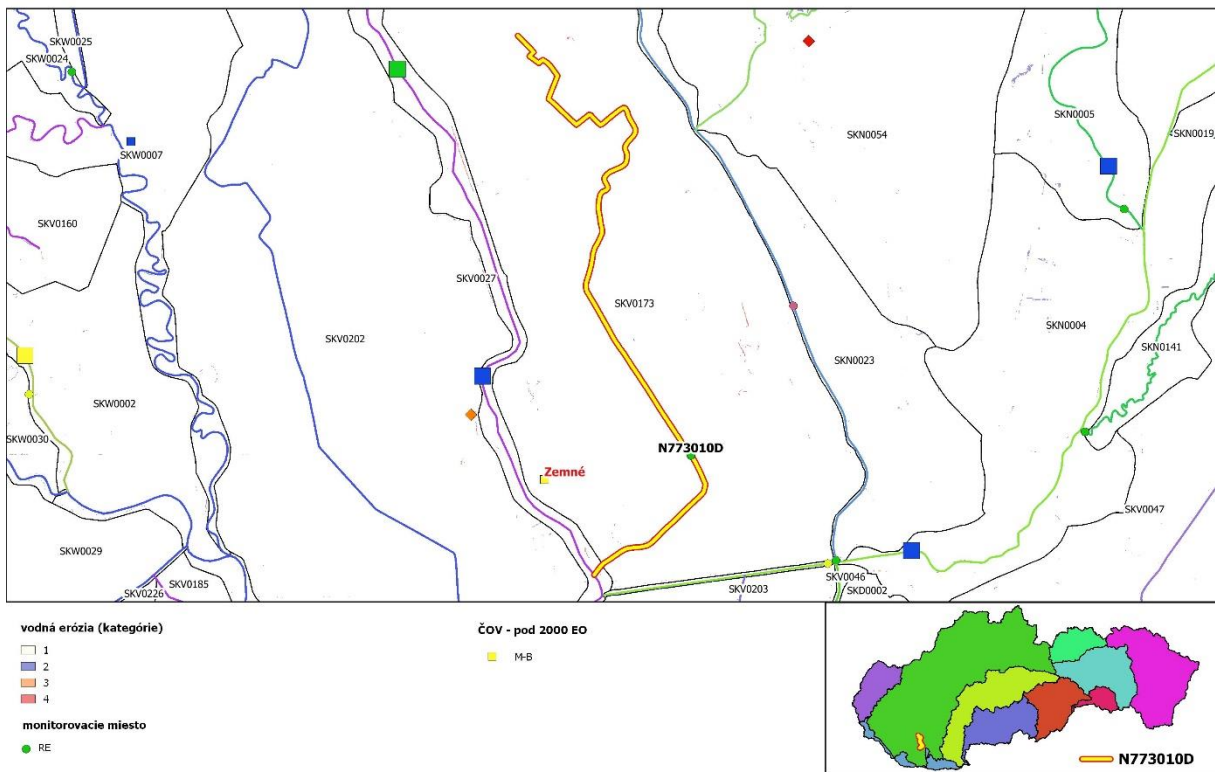
Obr.71 Analyzované povodie monitorovacieho miesta N768000D



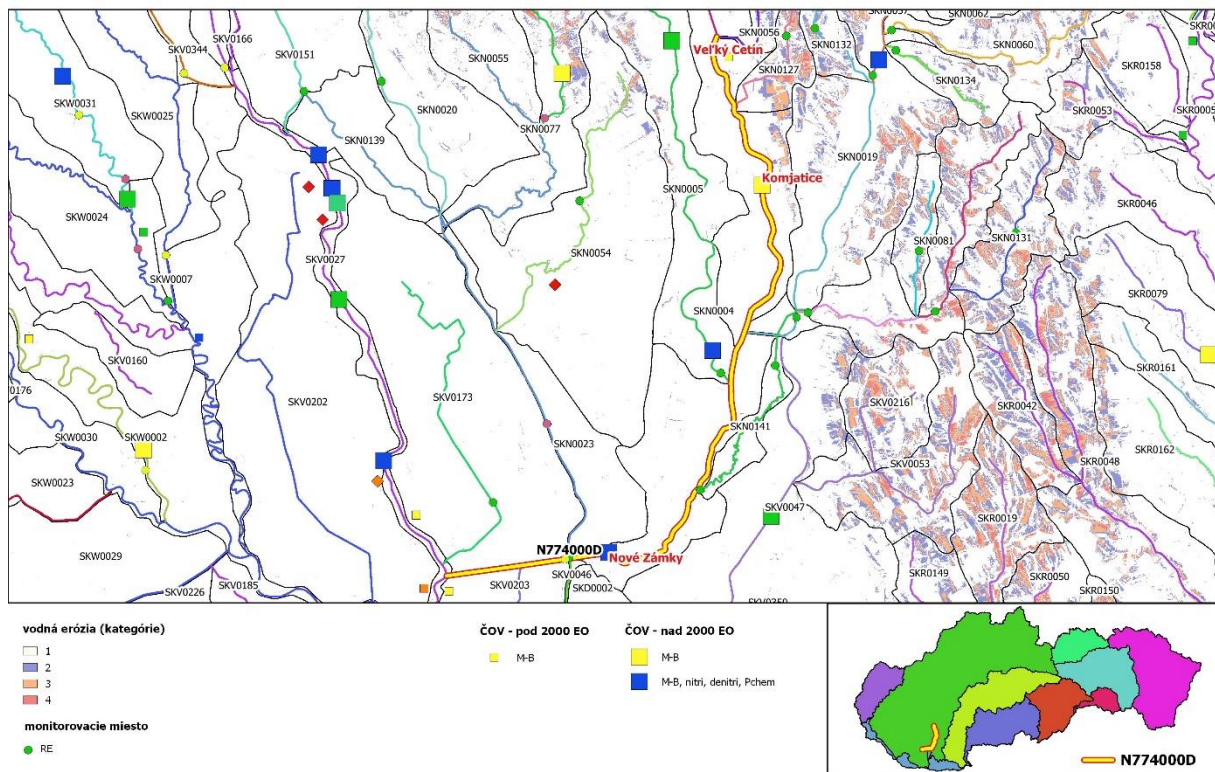
Obr.72 Analyzované povodie monitorovacieho miesta N768500D



Obr.73 Analyzované povodie monitorovacieho miesta N773000D



Obr.74 Analyzované povodie monitorovacieho miesta N773010D



Obr.75 Analyzované povodie monitorovacieho miesta N774000D